

Model type:

ARWF149SNA

Commercial code:

F063066

General notes

Technical Documentation guidelines

You can find herewith some generic information to simplify consulting of technical documentation:

1. Models of same range share the same exploded views, which report the richest set of spare parts: generally, a model does not necessarily have a related spare part for each particular shown on exploded views.
2. Some spare parts can not be represented directly on the exploded views (instruction booklets, specific kit, etc...). You can find those codes in the spare parts list with the same reference of particular where spares are installed or with references 099, 999. Instruction booklets, once managed, appear with 000 reference.
3. On the higher right site of each exploded view there is a serial number which indicates the beginning of the production of certain range: some models might have more than an exploded view for a given category, each distinguished by a different serial no. and linked to another spare parts list. In this case, serial no. is required to supply the right spare part code. Exploded view to be considered is the one with a more recent serial no. but previous than the one of the model that needs assistance.
4. Exploded views might require further updates even after publishing. Addition of new spares will go on following the already existing numeration references. Revision number of an exploded view is shown into last four digits of serial number into upper right hand corner.
5. The spare parts list associated to an exploded view shows related codes of spares managed for a certain model; for each spare part other informations are available:

REF: reference no of spare into a table; SUBSTITUTE: list of spare(s) which can replace a code but that keeps same functional characteristics

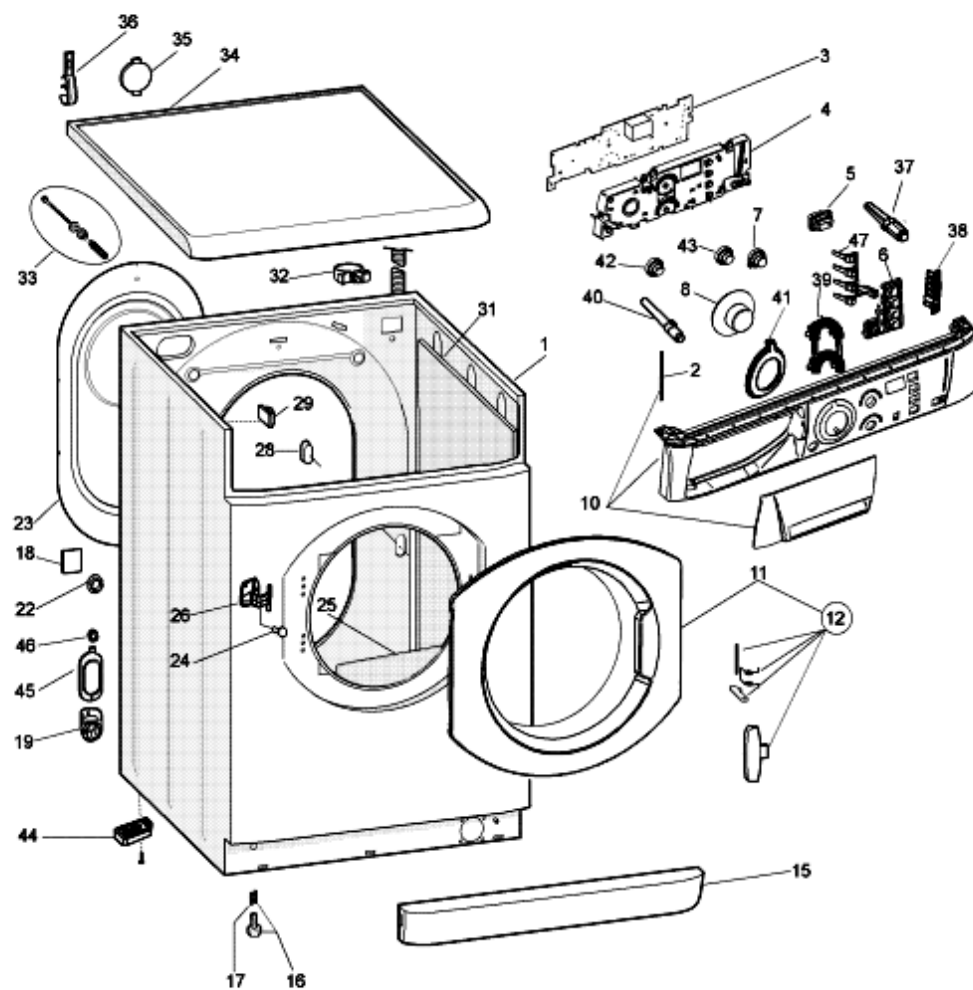
INDUSTRIAL CODE: list of variables of a model (shown into model label) where such spare is used; NOTICE: code of information(s) to refer to complete technical intervention, track for changes or to find correct spare part code.
6. Some notices, into a same section are generic therefore cannot be directly linked to a spare part. In order to assist a model in the best way as possible, it is helpful to pay attention to all notices and constantly verify documentation updates
7. Technical documentation cover shows model name and its commercial codes

1140140C

Exploded views

Matr. 71015.0001

DIGIT



1140140C

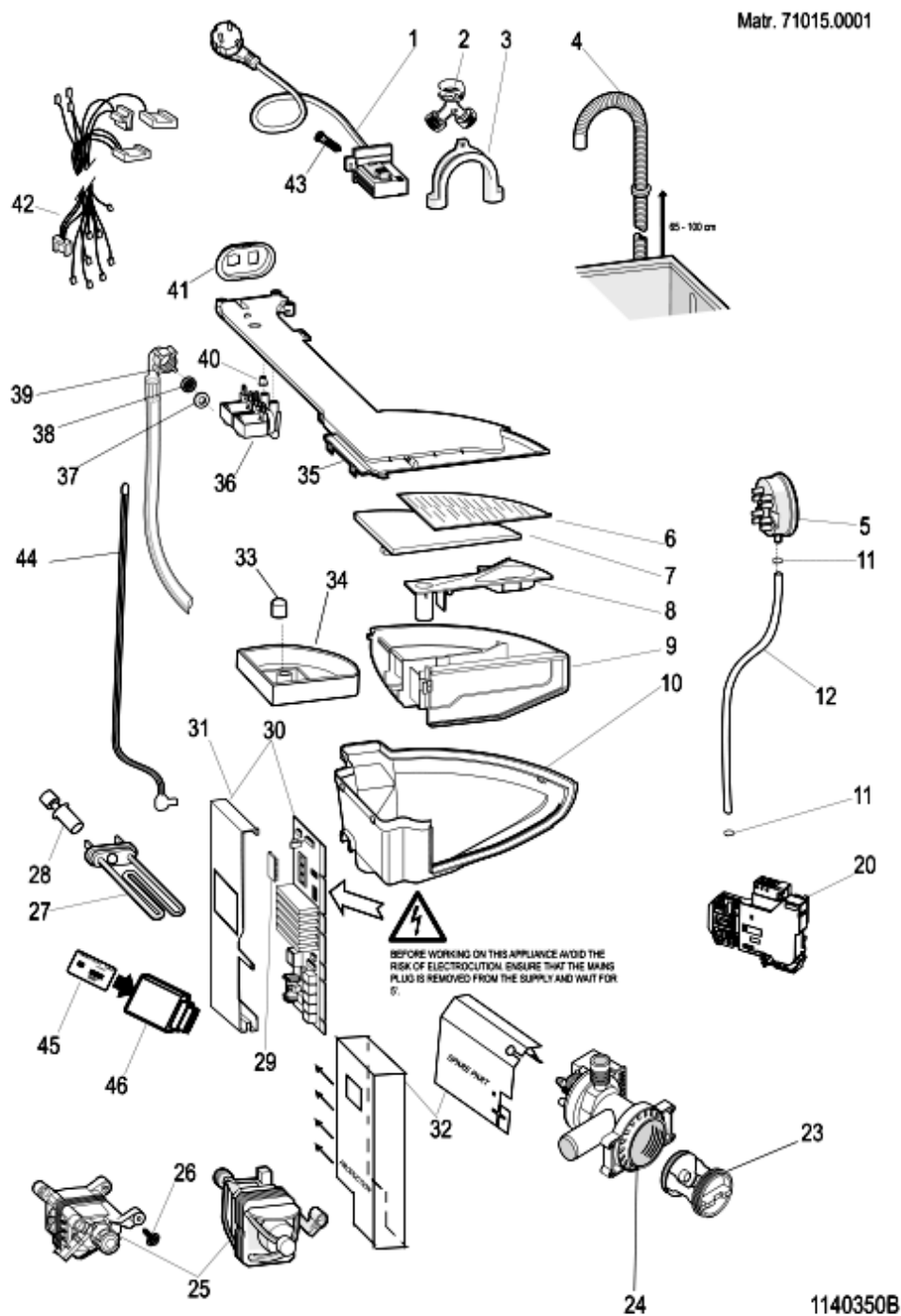
1140140C

Spare parts list

Ref.	Code	From	To S/N	Substitute	Description	Notice	Industrial
001	C00116539				cabinet white standard pw evoii		
002	C00091882				pivot pin drawer front 106.5x5		
003	C00262638			1 x C00277184	control digit arsf		
004	C00266911				support display module		
005	C00278488				pushbutton silver start/pause usa		
006	C00278580				option button (5)		
007	C00278577				temperature pushbutton silver		
008	C00278573				wash timer knob silver arwf		
010	C00278587				control panel & handle silver		
011	C00278493				door frame+glass silver arwl129s		
012	C00278327				door handle kit - gray ariston usa		
015	C00081310				plinth grey 2		
016	C00087084			4 x C00296866	foot		
017	C00083828				foot spring (11x8.5mm)		
019	C00064755				drain hose collar		
022	C00065871				blanking plug		
023	C00278387				rear cover - grey		
024	C00256725				screw testfer m4 x 16 mm		
026	C00254619				hinge		
028	C00065185				bolt m4,5 x 8		
028	C00143911				blanking plate-rear(test plug) ul		
029	C00141387				cable clamp hose		
033	C00145769				transit bolt		
034	C00143924				top silver+ plate ariston		
036	C00046667				wiring stop		
036	C00064550				drain hose holder		
037	C00255691				start lens		
038	C00255147				light guide status		
039	C00255695				lens (temp./ spin)		
040	C00255704				on/off neon lens		
041	C00255689				programme knob lens		
042	C00278575				pushbutton on/off silver arsf		
043	C00278574				spin speed pushbutton silver arwf		
047	C00264223				light guide status digit ar/hp		
099	C00012687				self-tapping screw hi-lo 3,5x13		

1140350B

Exploded views



1140350B

Spare parts list

Ref.	Code	From	To S/N	Substitute	Description	Notice	Industrial
001	C00276595				supply cable usa		
003	C00019902				plastic -u- to make drain hose		
004	C00091775				drain hose to sink l=1820 mm		
005	C00257922		10205...	1 x C00284971	pressure switch 1 l. 85-60 ul		
005	C00284971	10206...			pressure switch 1 l. 76-51 ul usa		
008	C00046154				additive cover		
009	C00046148			1 x C00281253	soap dispenser drawer (rotary)		
010	C00276598				dispenser body usa ul		
011	C00092412				hose clamp		
012	C00144077				pipe pressostat l= 540mm. evo ii		
020	C00065185				bolt m4,5 x 8		
020	C00257924				thermal lock ul		
023	C00045023				filter handle		
023	C00045025				filter seal		
023	C00045027				pump filter kit		
024	C00112504				self cleaning pump 120v 60hz		
026	C00094744				screw locking motor/tub		
027	C00288934				heating element 1000w/120v ul		
028	C00083915				thermistor ntc		
030	C00254529				module three phase + eeprom		
031	C00115069				support cover 3 f		
031	C00115070				bracket for module 3 f		
032	C00254409				protecting module (mylar) (hl)		
033	C00046157				stopper detergent container		
034	C00046152			1 x C00287239	additive container		
035	C00276599				hopper cover 2e 3u r 2.5 wm usa		
036	C00110452				electrovalve 1way 5,5lt hot rst2.5		
036	C00110453				electrovalve ie2u 7lt.rst2,5 120v		
037	C00005572				sealing washer-mains inlet hose		
038	C00005781				inlet hose filter		
039	C00112930				inlet hose with usa		
040	C00064534				seal - dispenser to valve		
041	C00257907				electrovalve support 2 ev usa		
042	C00276643				wiring evp evl ntc (module j8)		
042	C00276644				wiring comunic. display		

1140350B

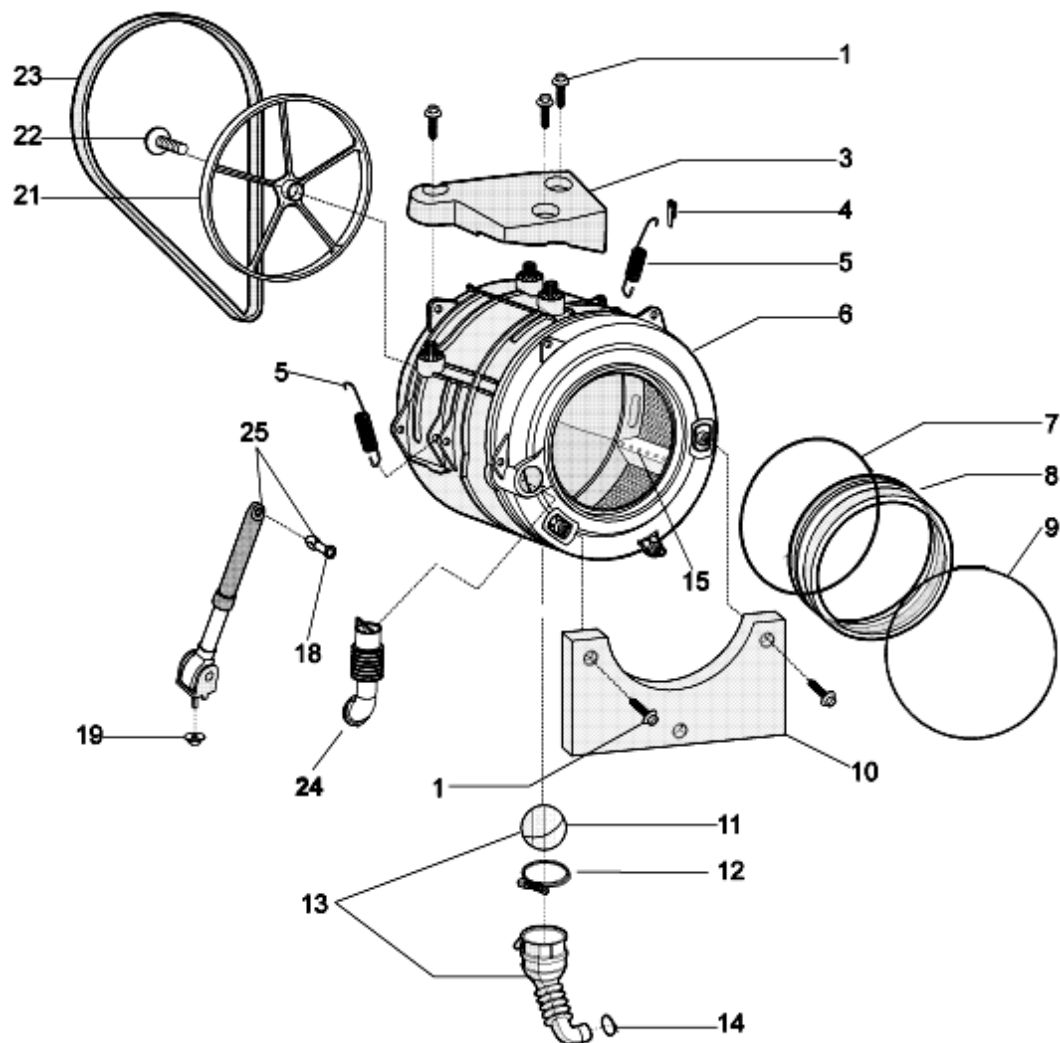
Spare parts list

Ref.	Code	From	To S/N	Substitute	Description	Notice	Industrial
042	C00276645				cablage door lock (j4)		
042	C00276646				wiring pump-motor-module j9		
043	C00092348				self-scraping screw 3,5x8		
044	C00256761				emergency door release strap		
045	C00278582		10205...		card arwf149sna 8kb sw		
045	C00284972	10206...			card arwf149sna 8kb sw		
046	C00272306				smart reader for card 8kb 32kb +		
099	C00257890				supressor filter ul		

1180270C

Exploded views

Matr. 71020.0002



1180270C

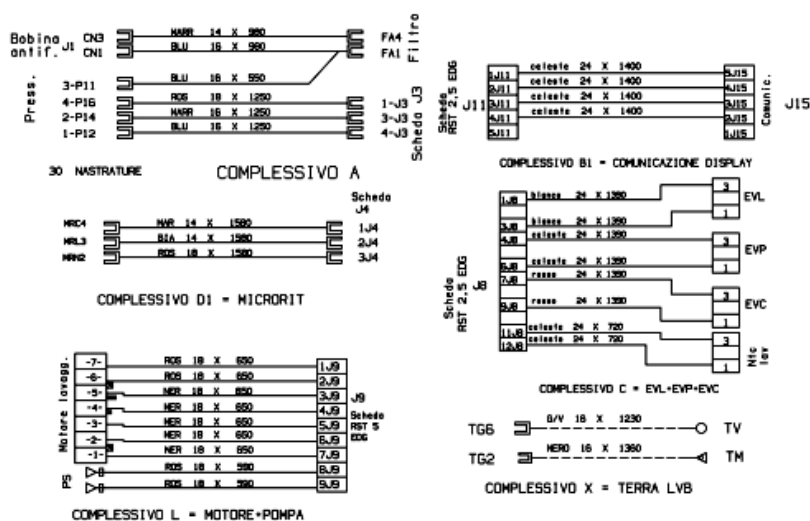
1180270C

Spare parts list

Ref.	Code	From	To S/N	Substitute	Description	Notice	Industrial
001	C00194611				screw.pl28 9.5x50 tmtfr t40	n4011c00	
001	C00194612				screw larger diameter 11.3x50 kit	n4011c00	
003	C00119110				upper counterweight 12.5 kg		
004	C00141682				anchorage pad - suspension		
005	C00145754				suspension spring - tank		
007	C00092155				door seal- rear retainer		
008	C00262267			1 x C00111416	door seal 30x30mm (hl)		
009	C00092156				door seal retainer front		
010	C00145205				front counterweight 11,4 kg		
011	C00092172				ball oko evo ii		
012	C00094908				hose clamp		
013	C00274662				outlet hose		
014	C00092411			1 x C00094908	hose clamp		
015	C00064789			1 x C00268109	lifter - extractable		
018	C00280757				plastic expansion peg new		
019	C00271652				nut romob m6x20x1,5		
021	C00199343				drum pulley d=280 mm h=20 mm		
022	C00051739			1 x C00064786	m8 x 20 tefl. 10.9 screw		
				1 x C00143260			
023	C00119126				belt 1201 - 1198 j6		
024	C00066183				hose dispenser to tank		
025	C00140744				shock absorber 100 n kit		

Electric schemes and links

Cod. 16002090200



16002090200

Legend

Legend: 16002090200