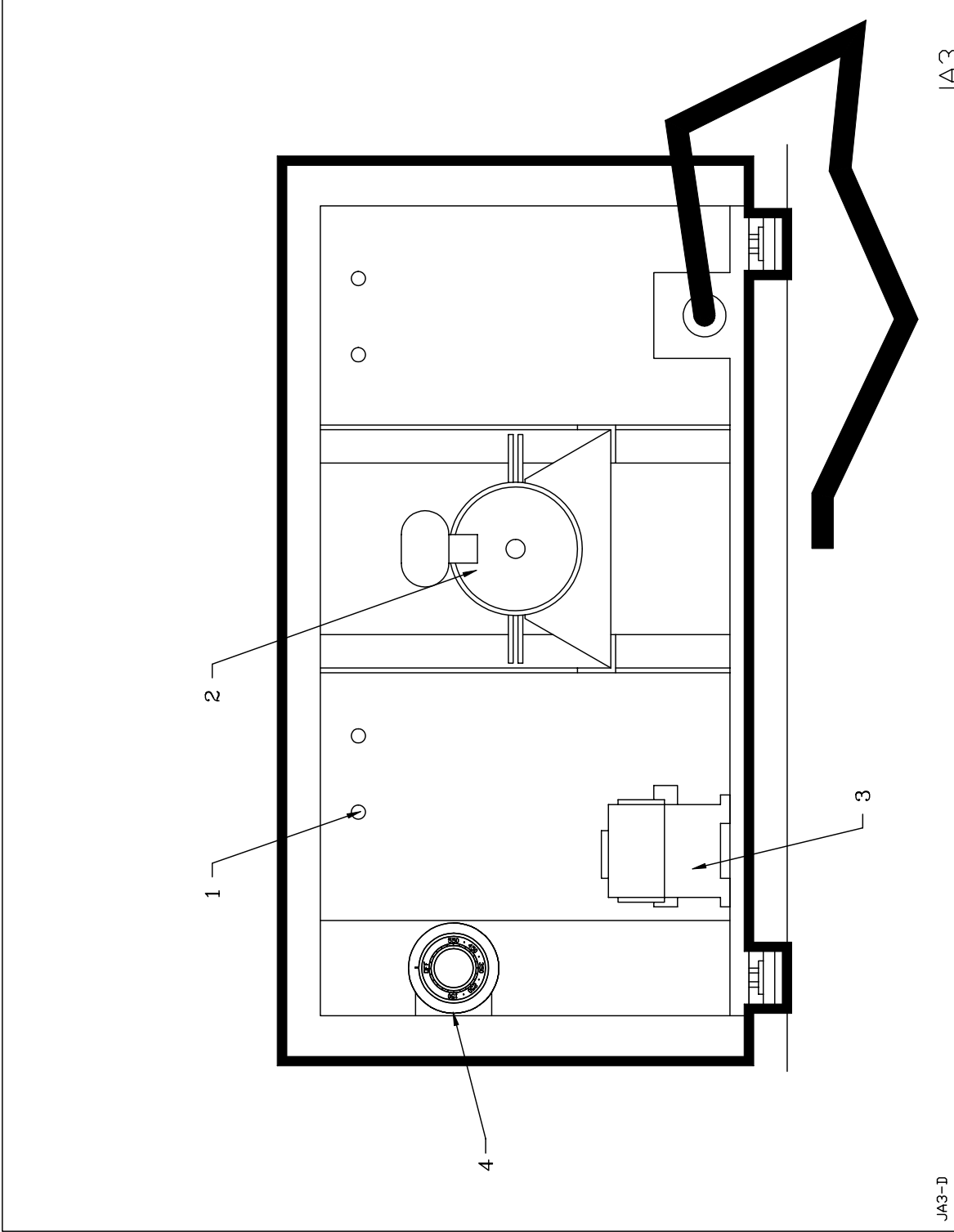


Item	Part Number	Description	Quantity
1	P1710F	OVEN DOOR 17 1/4" X 10 1/4"	1
2	QUP540	BLACK HANDLE	1
3	QUA400	DOOR MAGNET	2
4	ELL650	PILOT LIGHT	1
5	ELT544B	THERMOSTAT RANCO 480 °F	1
AND	ELT552	THERMOSTAT KNOB 550F	1
AND	ELT620	THERMOSTAT BEZEL	1
6	ELI635	SWITCH 20A/130V - 15A/240 V P. LIGHT	1
7	PAP400	AJUSTABLE LEG 1/2-13 NC	4
8	ELB096	5A BREAKER	1
OR	ELB098	2A BREAKER (220V ONLY)	1

Model : JA-3

View : FRONT



JA3

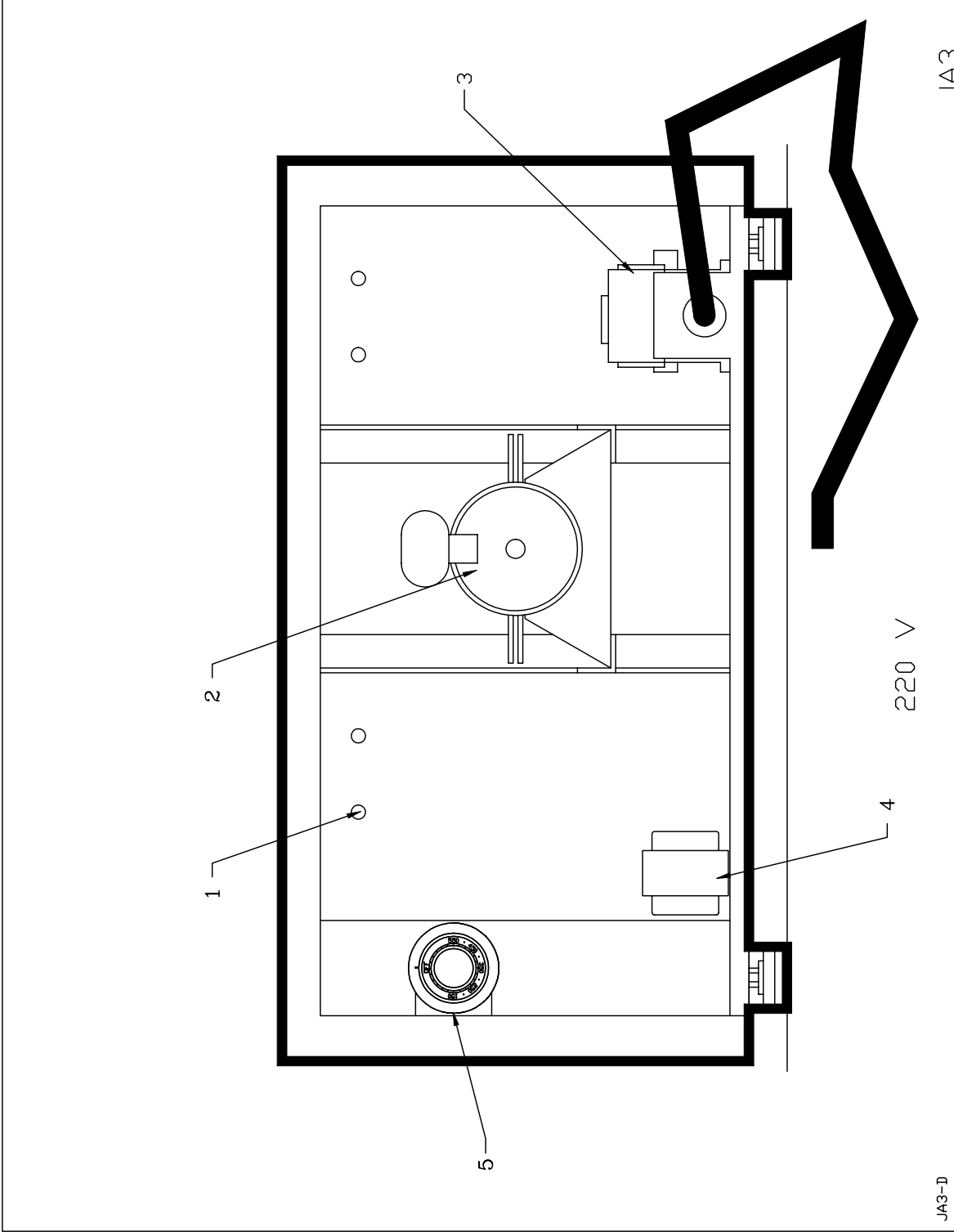
JA3-D

E4

Item	Part Number	Description	Quantity
1	ELE110	STRAIGHT ELEMENT 208V 2500W	2
OR	ELE120	STRAIGHT ELEMENT 240V 2500W	2
2	ELM934	MOTOR 240 VOLTS FOR FC16 (JA3 ONLY)	1
3	ELC908	HEATING CONTACTOR	1
4	ELT680	THERMOSTAT 700°F	1

Model : JA-3

View : BACK



JA3

220 V

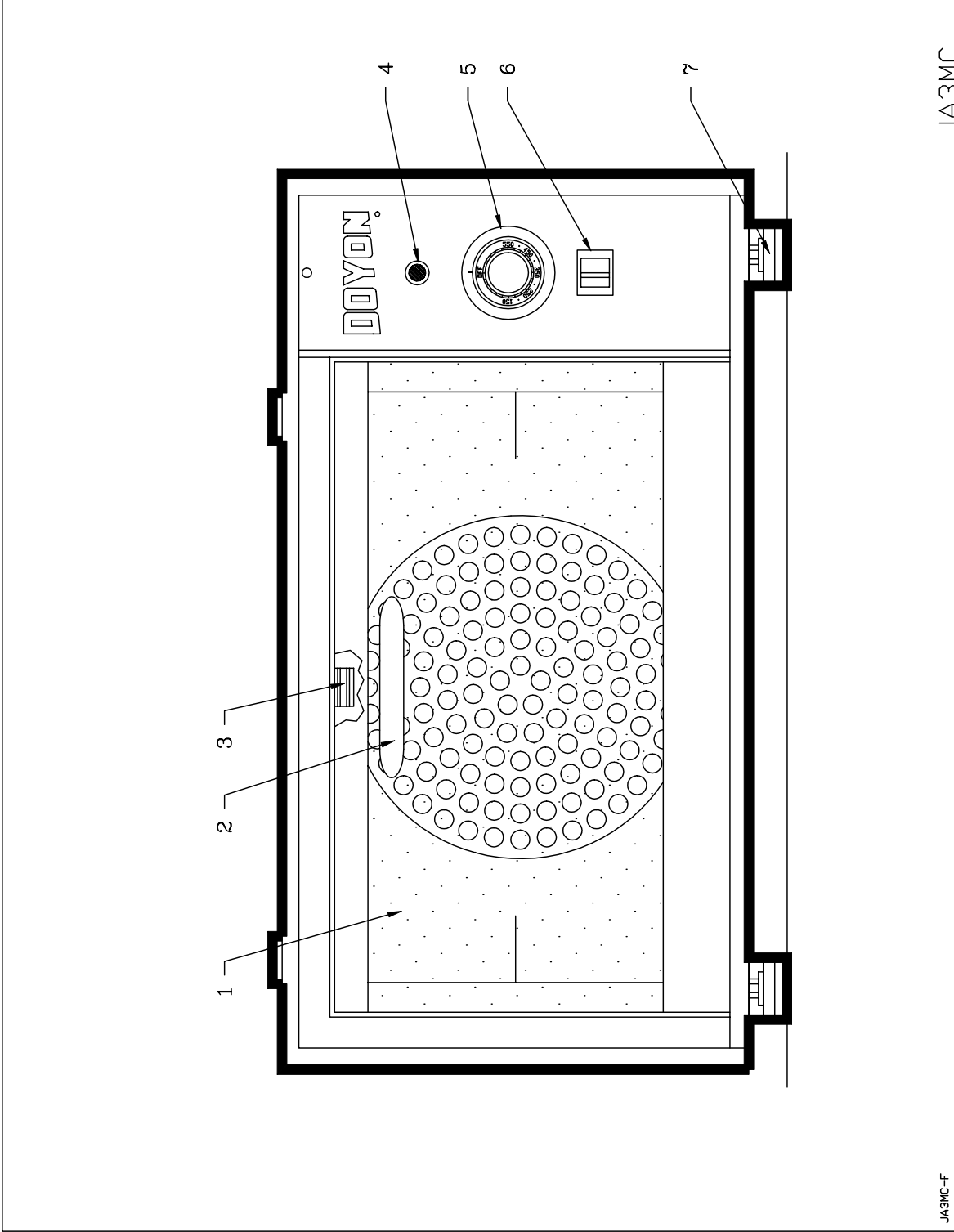
JA3-D

E6

Item	Part Number	Description	Quantity
		(ON 220V 1PH 50Hz)	
1	ELE120	STRAIGHT ELEMENT 240V 2500W	2
2	ELM934	MOTOR 240 VOLTS FOR FC16 (JA3 ONLY)	1
3	ELC908	HEATING CONTACTOR	1
4	ELT715	TRANSFORMER 240>120 100VA	1
5	ELT680	THERMOSTAT 700°F	1

Model : JA-3

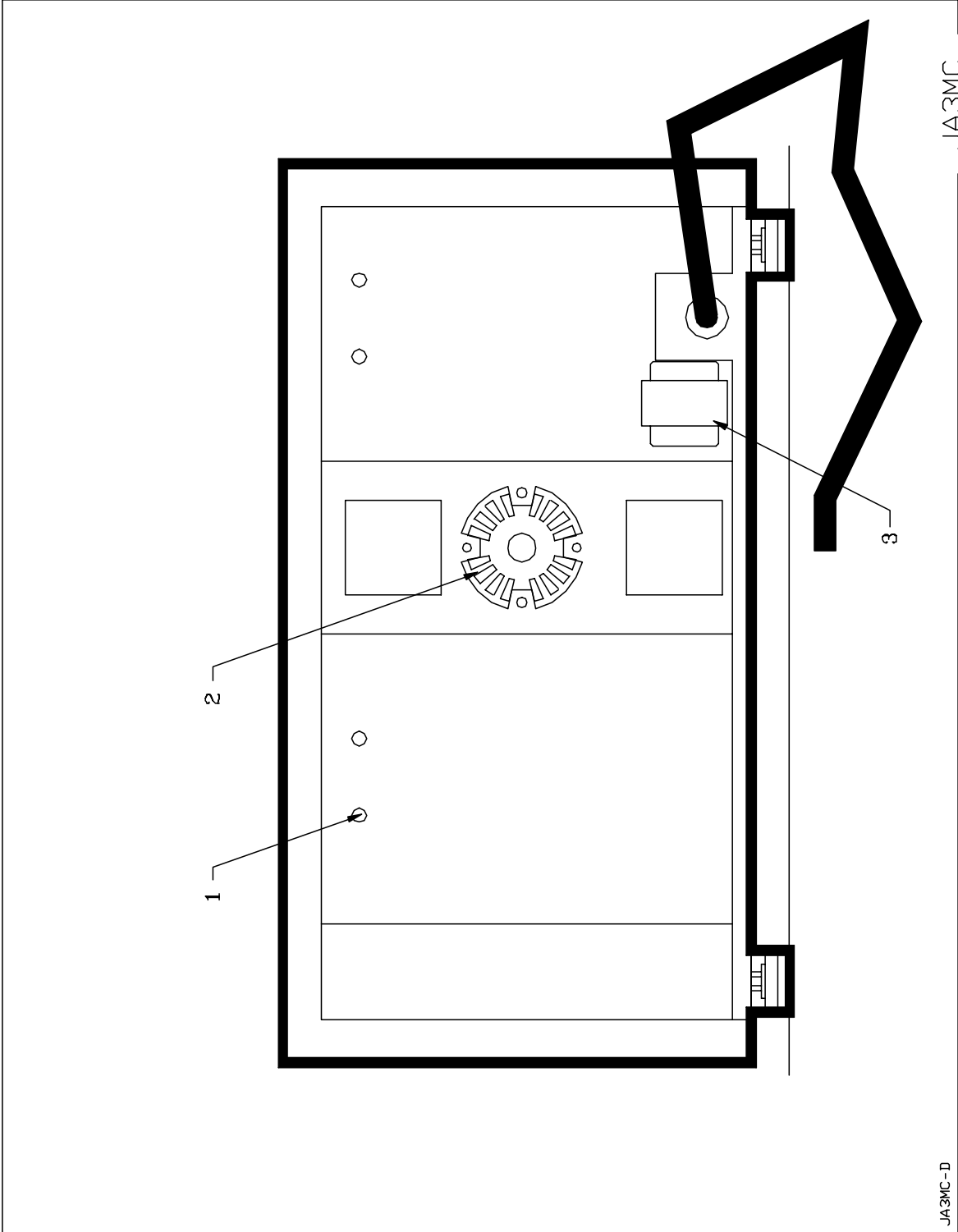
View : BACK 220V



Item	Part Number	Description	Quantity
1	P1710F	OVEN DOOR 17 1/4" X 10 1/4"	1
2	QUP540	BLACK HANDLE	1
3	QUA400	DOOR MAGNET	2
4	ELL650	PILOT LIGHT	1
5	ELT544B	THERMOSTAT RANCO 480 °F	1
AND	ELT552	THERMOSTAT KNOB 550F	1
AND	ELT620	THERMOSTAT BEZEL	1
6	ELI635	SWITCH 20A/130V - 15A/240 V P. LIGHT	1
7	PAP400	AJUSTABLE LEG 1/2-13 NC	4

Model : JA3MC

View : FRONT



Item	Part Number	Description	Quantity
1	ELE125	STRAIGHT ELEMENT 120V 1000W	2,
OR	ELE300	STRAIGHT ELEMENT 3000W 208 VOLTS (FOR MODEL 3000 WATTS ONLY)	1
OR	ELE305	STRAIGHT ELEMENT 3000W 230 VOLTS (FOR MODEL 3000 WATTS ONLY)	1
OR	ELE121	STRAIGHT ELEMENT 120V 1500W (FOR MODEL 1500 WATTS ONLY)	1
2	ELM957	MOTOR 1/70HP 115V 60 OR 50Hz	1
3	ELT715	TRANSFORMER 240>120 100VA (220V 1PH 50Hz ONLY)	1

Model : JA3MC

View : BACK