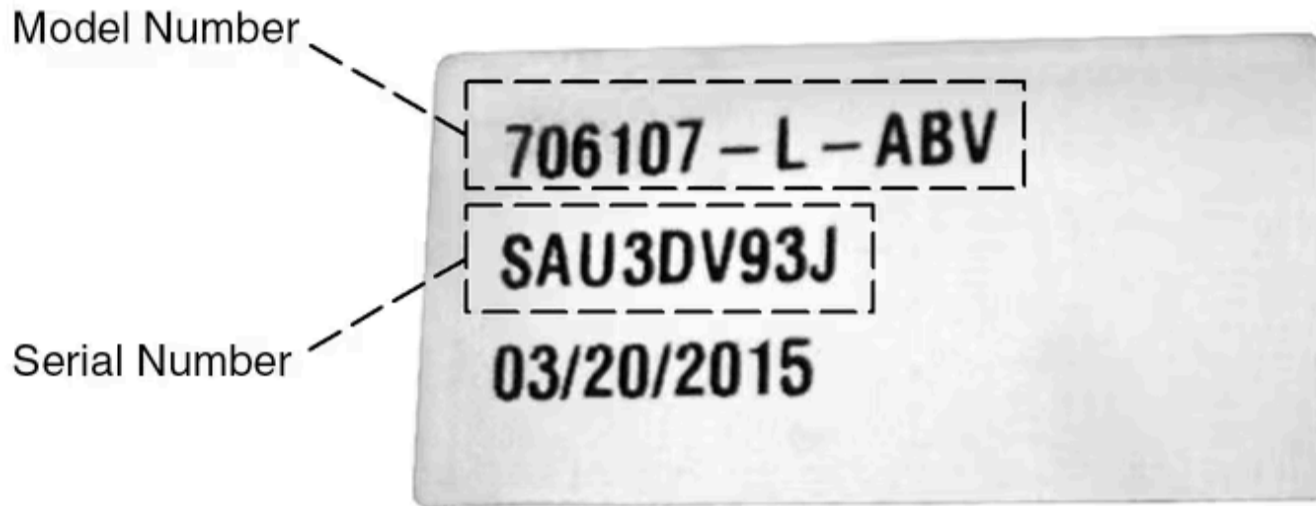


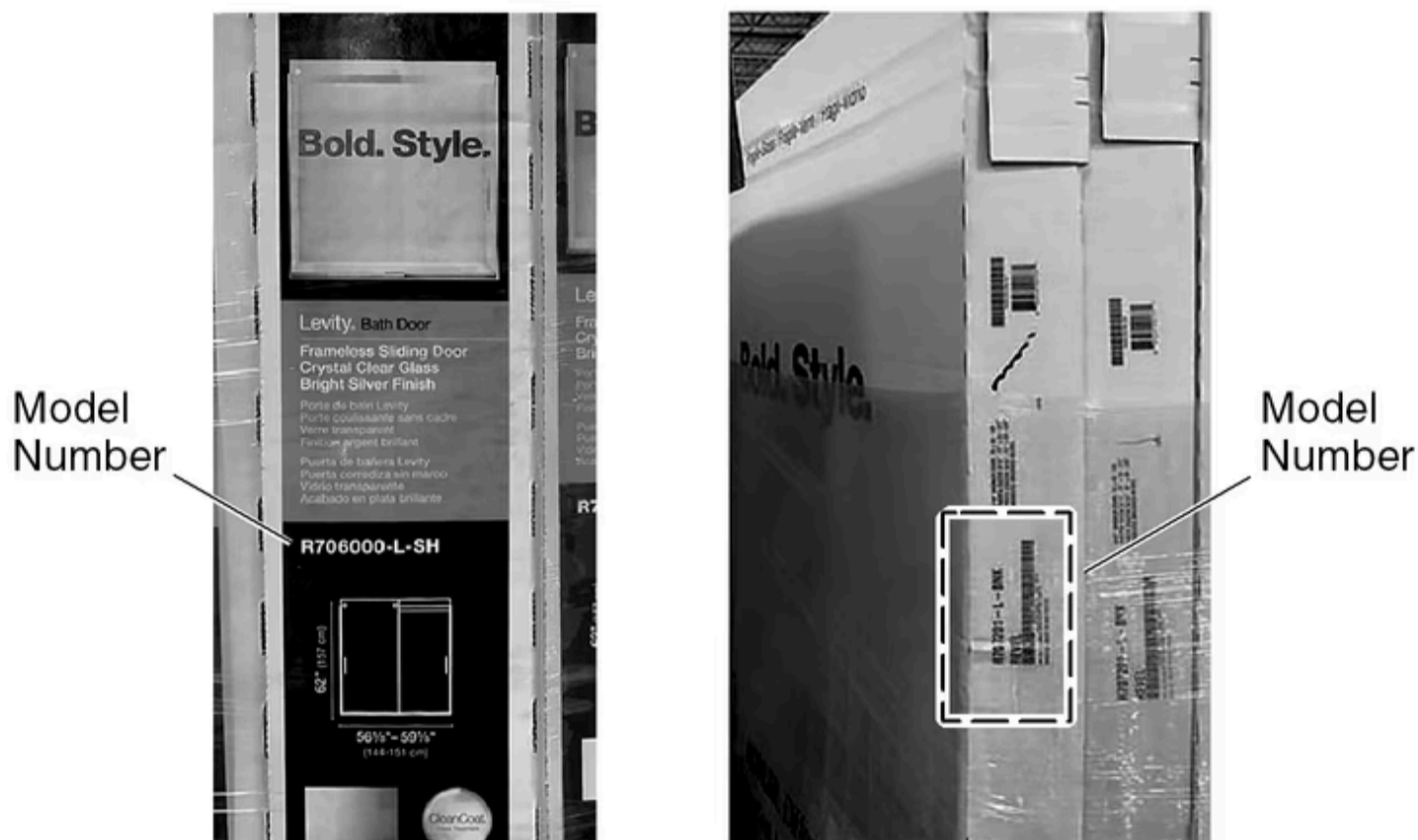
Identifying Your Shower Door Model

THE BOLD LOOK
OF **KOHLER**®

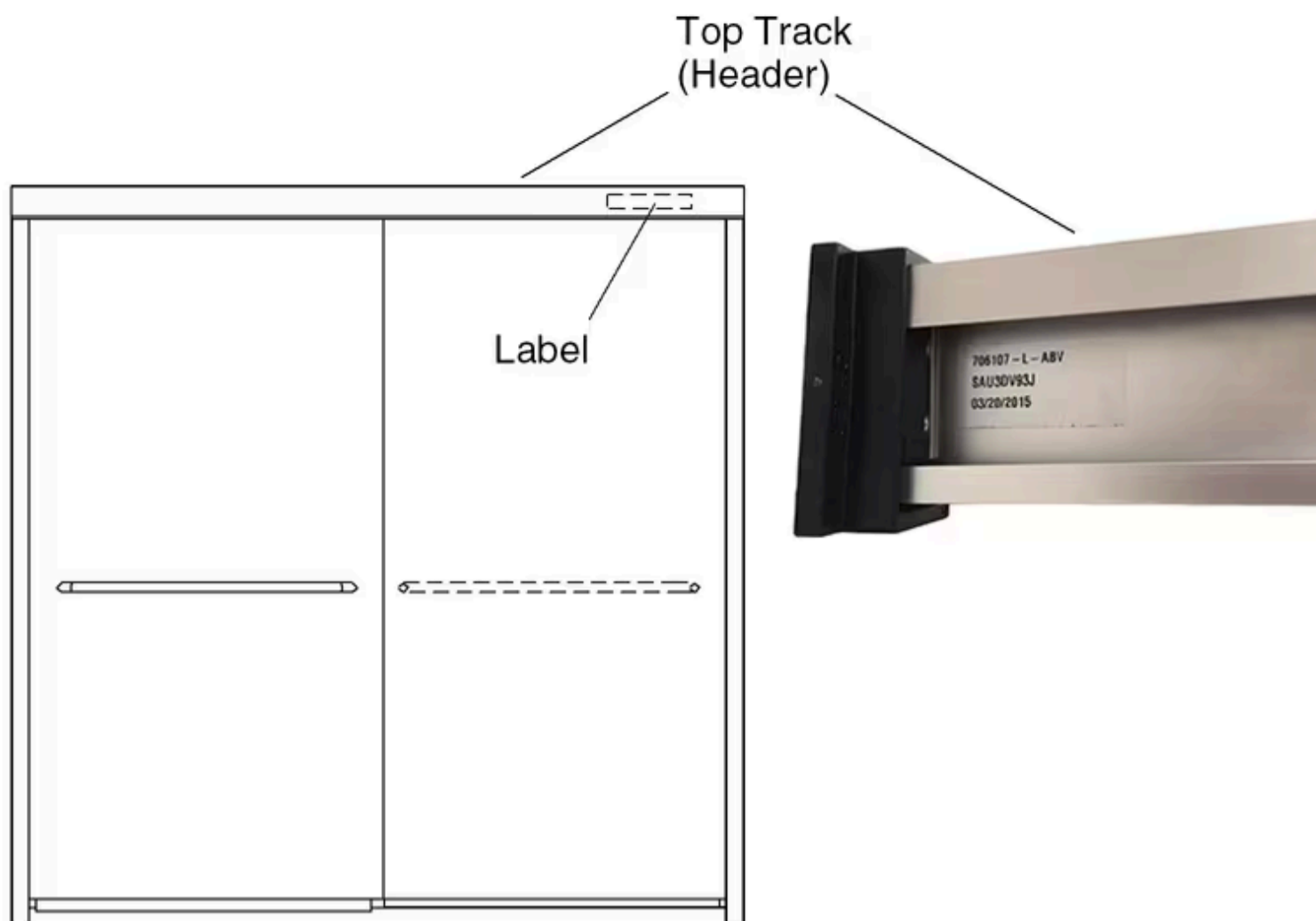
Model Number Location Overview



The model number and serial number are printed on a white or clear label that is adhered to the product itself, to a pamphlet that is packed with the product, or on a label on the product box. The model number includes one or more dashes followed by letters that indicate the door style and color code. The serial number consists of number and letters and does not contain dashes. The serial number will always start with SAU. Location of Model Number on Product Box



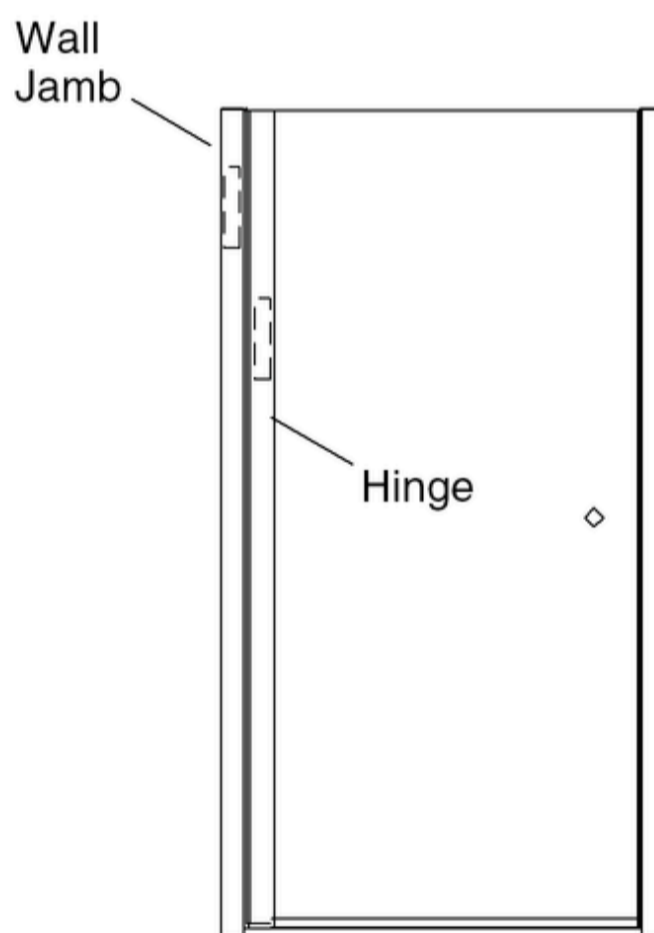
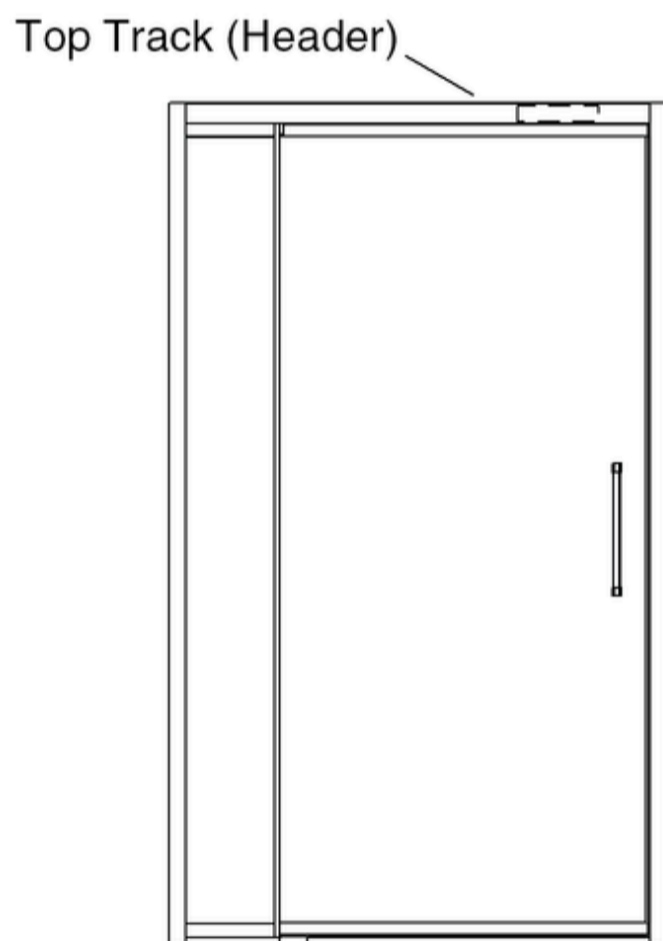
The model and serial number are printed on a label on the product box. The label is most likely printed on the narrow side of the box. Sliding (Bypass) Doors



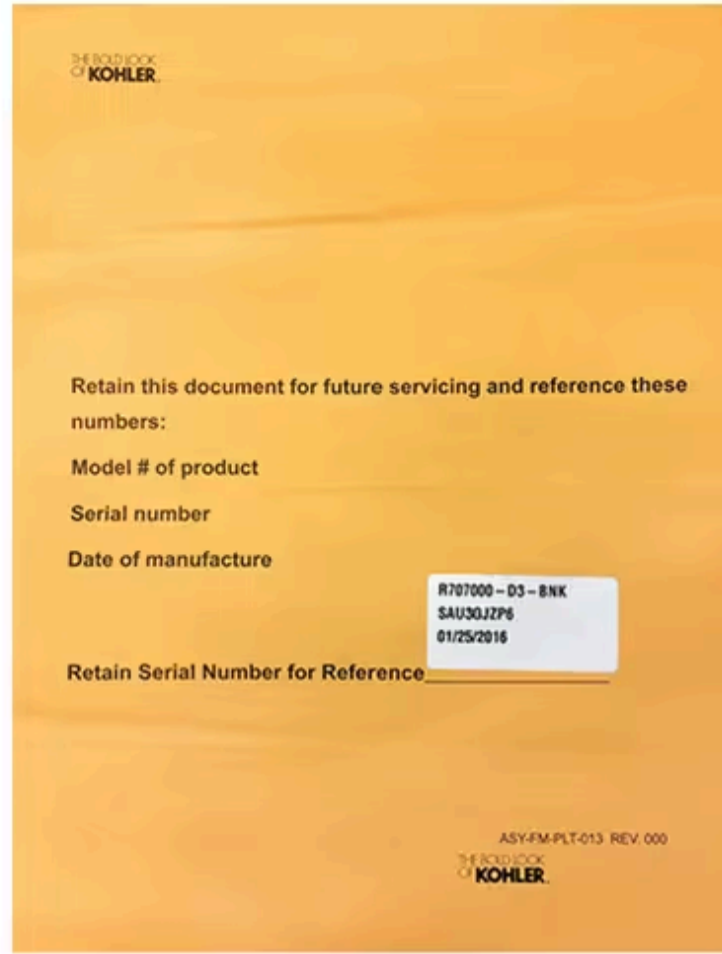
The model number is printed on a label located inside or on the underside of the top track (also called the header). The label may be white or clear and is typically located toward one side of the track. Pivot (Hinge) Doors

Door With Header

Frameless Door



The model number is located on a white or clear label that is adhered to one of the metal parts of the product. Pivot Door with Header: The label is located inside the top track (also called the header). Frameless Pivot Door: The label is located either behind the wall jamb or behind the door hinge. Minimalist Frameless Doors



Shower doors that contain few metal parts will not include a label on the product. The model number and serial number are printed on a label that is adhered to a white or bright orange pamphlet that is packed with the product.

1256280-10-B ©Kohler Co.