

REPLACEMENT PARTS LIST

(SUB-123P)

Reference #	Description	Replacement Part #
ELECTRICAL COMPONENTS - -		
1	Power Terminal Block	50-0237
2	Ground Lug	50-1329
3	Contactor:	
	120-volt coil, 40-amp (US).....	66-2013
4	Programmable Controller Assembly	112-9153
5	Oven Temperature Sensor	252-3001
6	Oven Heating Element:	
	208-volt, 2000-watt	251-1005
	240-volt, 2000-watt	251-1002
7	Oven Motor Assembly.....	250-1002
8	Proofer Sensor	66-1146
9	Proofer Heat Element:	
	120-volt, 255-watt (Manual Fill).....	60-0002-B
	120-volt 600-watt (Automist).....	60-0001-1-B
10	Proofer Humidity Element Assembly:	
	120-volt, 650-watt (US)	251-2001
11	Proofer Motor Assembly:	
	Manual Fill.....	250-2004
	Automist.	250-2010
12	Control Transformer (24 VAC output)	66-9505
15	Oven Door Micro Switch	252-2004
16	Alarm	252-1022
17	Thermal Overload Safety (425°F).....	66-1114
18	Manual Reset Fuse (20 Amp).....	66-1097
19	Cooling Fan.....	250-3001
20	Light Fixture:	
	Socket	50-1020
	Bulb:	
	120-volt, 40-watt (US)	50-0695
	Light fixture kit Oven (Socket, Globe, and Gasket)	252-7004
	Light fixture kit Proofer (Socket, Globe, and Gasket)	252-7006
21	Water Solenoid Valve (Automist only).....	50-0308-1
DOOR COMPONENTS - -		
41	Oven Door (without Latch):	
	Hinged Left	112-9159
	Hinged Right	112-9151
42	Proofer Door (without hardware).....	21-1950
43	Proofer Door Hinge:	
	Left side	254-3011
	Right side	254-3012
44	Latch/Catch Assembly:	
	Proofer.....	254-2025
	Oven	254-2026
46	Gasket:	
	Oven Door.....	254-1001
	Proofer Door	70-0358-A

OVEN INTERIOR COMPONENTS - -

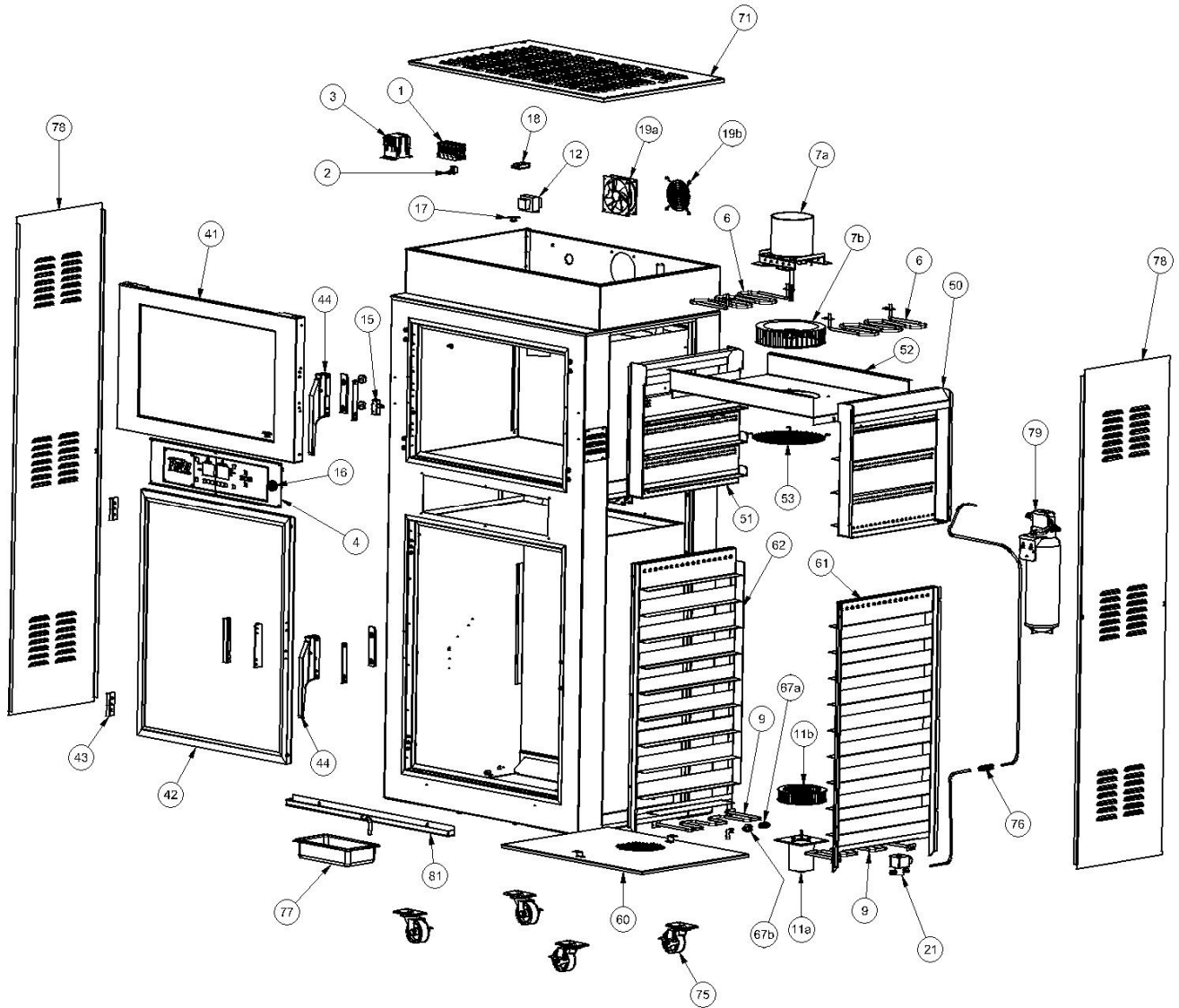
50	Oven Wall Assembly (Right).....	112-9067
51	Oven Wall Assembly (Left).....	112-9066
52	Oven Element / Fan Cover.....	112-0013-B
53	Wire Fan Guard.....	112-0275

PROOFER INTERIOR COMPONENTS - -

60	Proofer Element / Fan Cover	
	Manual Fill	112-0031-1-A
	Automist	112-9027
61	Proofer Wall Assembly (Right)	112-9023
62	Proofer Wall Assembly (Left)	112-9024
64	Water Pan (Manual Fill only)	50-0074
65	Wire Shelf	112-0059-B
67	Quick Change Nozzle Kit	251-3005
67a	Quick Change Nozzle.....	31-0454
67b	Quick Change Nozzle Base.....	31-0453

GENERAL EXTERIOR COMPONENTS - -

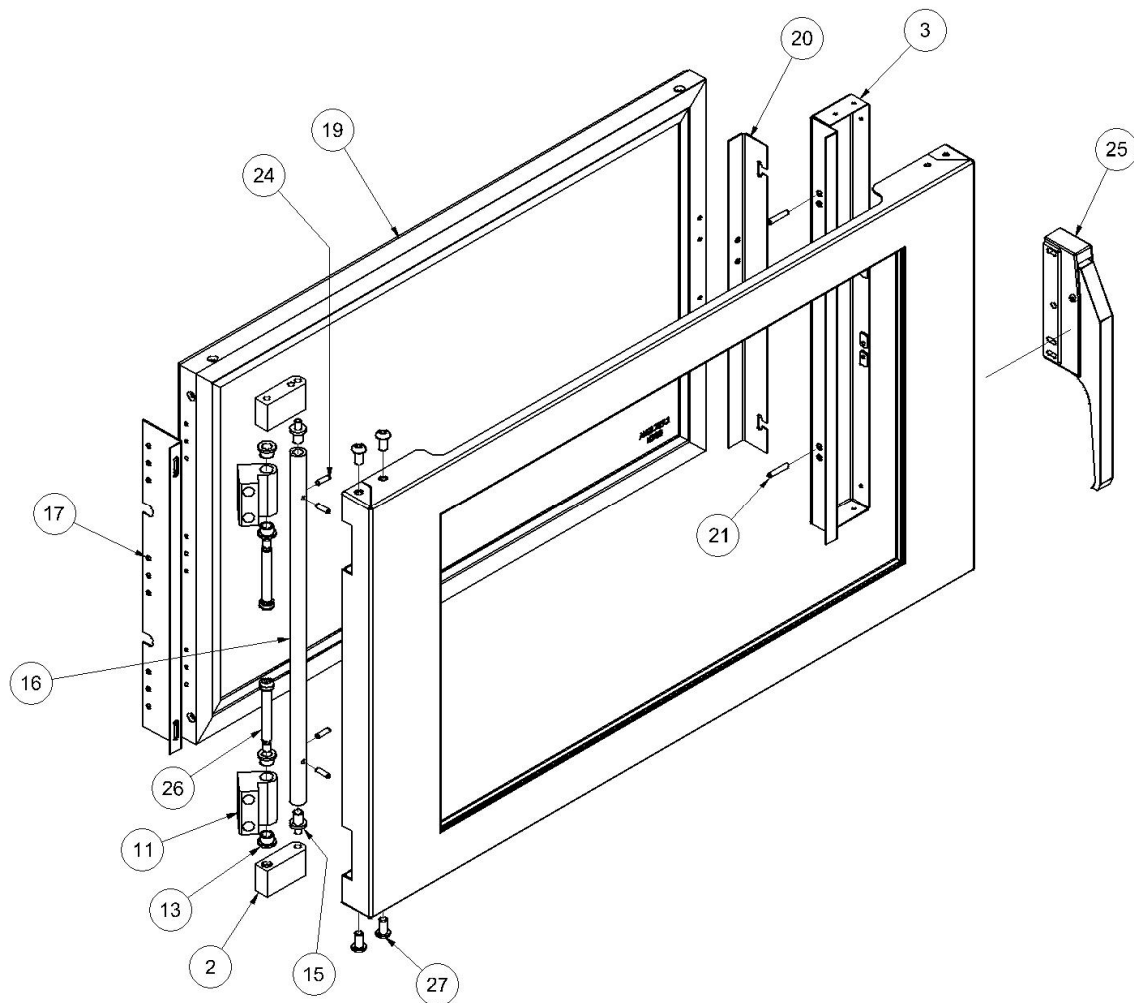
71	Outside Top	112-0075-B
75	Caster	50-0058
76	Water Inlet Bulkhead (Automist only)	31-0058
77	Drain Pan	50-0547
78	Side Panel	112-0066-1-A
79	Water Filter Assembly (Automist only)	112-9166
81	Drip Trough Assembly.....	135-9950



Replacement Parts List		
Reference #	Description	Replacement part #
1	Power Terminal Block	50-0237
2	Ground Lug	50-1329
3	Contactors (120V coil)	66-2013
4	Programmable Control Assembly	112-9153
5*	Oven Temperature Sensor	252-3001
6	Oven Heating Element (208V)	251-1005
6	Oven Heating Element (240V)	251-1002
7	Oven Motor Assembly	250-1002
7a	Oven Motor	66-5504
7b	Blower Wheel	50-0444
8*	Proofer Sensor	66-1146
9	Proofer Heat Element (120V)	60-0001-1-B
11	Proofer Motor Assembly	250-2010
11a	Proofer Motor	66-5503
11b	Blower Wheel	50-0362
12	Control Transformer	66-9505
15	Oven Door Switch	252-2004
16	Alarm (included w/ Programmable Control Assembly)	252-1022
17	Hi Limit Switch	66-1114
18	Manual Reset Fuse (20A)	66-1097
19	Cooling Fan Assembly (120V)	250-3001
19a	Cooling Fan	50-0049
19b	Fan Guard	50-0048
20	Oven Light Fixture Kit (Socket, Globe, and Gasket)	252-7004
20	Proofer Light Fixture Kit (Socket, Globe, and Gasket)	252-7006
21	Water Solenoid Valve (120V)	50-0308-1
41	Oven Door Assembly (without Latch), Left Hinged	112-9151
41*	Oven Door Assembly (without Latch), Right Hinged	112-9159

Replacement Parts List		
Reference #	Description	Replacement part #
41*	Oven Door Assembly (without Latch), Right Hinged	112-9159
42	Proofer Door Assembly (without Hardware)	21-1950
43	Proofer Door Hinge (Left Hinged Unit)	254-3011
43*	Proofer Door Hinge (Right Hinged Unit)	254-3012
44	Latch / Catch Assembly (Proofer)	254-2025
44	Latch / Catch Assembly (Oven)	254-2026
46	Oven Door Gasket (included with Oven Door Assembly)	254-1001
46	Proofer Door Gasket (included with Proofer Door Assembly)	70-0358-A
50	Oven Wall Assembly (Right)	112-6067
51	Oven Wall Assembly (Left)	112-9066
52	Oven Element / Fan Cover	112-0013-B
53	Wire Fan Guard	112-0275
60	Proofer Element / Fan Cover (Automist)	112-9027
61	Proofer Wall Assembly (Right)	112-9023
62	Proofer Wall Assembly (Left)	112-9024
65*	Wire Shelf	112-0059-B
67	Quick Change Nozzle Kit	251-3005
67a	Quick Change Nozzle (includes strainer)	31-0454
67b	Quick Change Nozzle Base	31-0453
71	Outside Top	112-0075-B
75	Caster	50-0058
76	Water Inlet Bulkhead	31-0058
77	Drain Pan	50-0547
78	Side Panel	112-0066-1-A
79	Water Filter Assembly	112-9166
81	Drip Trough Assembly	135-9950

* indicates part is not shown



Parts List

ITEM	QTY	PART NUMBER	DESCRIPTION
2	2	07-0113	BLOCK,HINGE,OVEN
3	1	112-9167	WLDMT,COVER,LATCH
11	2	07-0084	HINGE,HIDDEN
13	4	50-1358	BUSHING
15	2	07-0114	HINGE PIN
16	1	112-0299	HINGE
17	1	112-0301	HINGE,DOOR,INNER
19	1	112-9158	ASSY,DOOR,OVEN,INNER
20	1	112-0302	LATCH,DOOR,INNER
21	2	2002313	PIN
24	4	112-0305	PIN,.187X5/8,10-32
25	1	50-1346	LATCH,HANDLE,OFFSET
26	2	53-0313	Hexagon Socket Shoulder Screw
27	4	53-0314	Hexagon Socket Button Head Cap Screw