

A

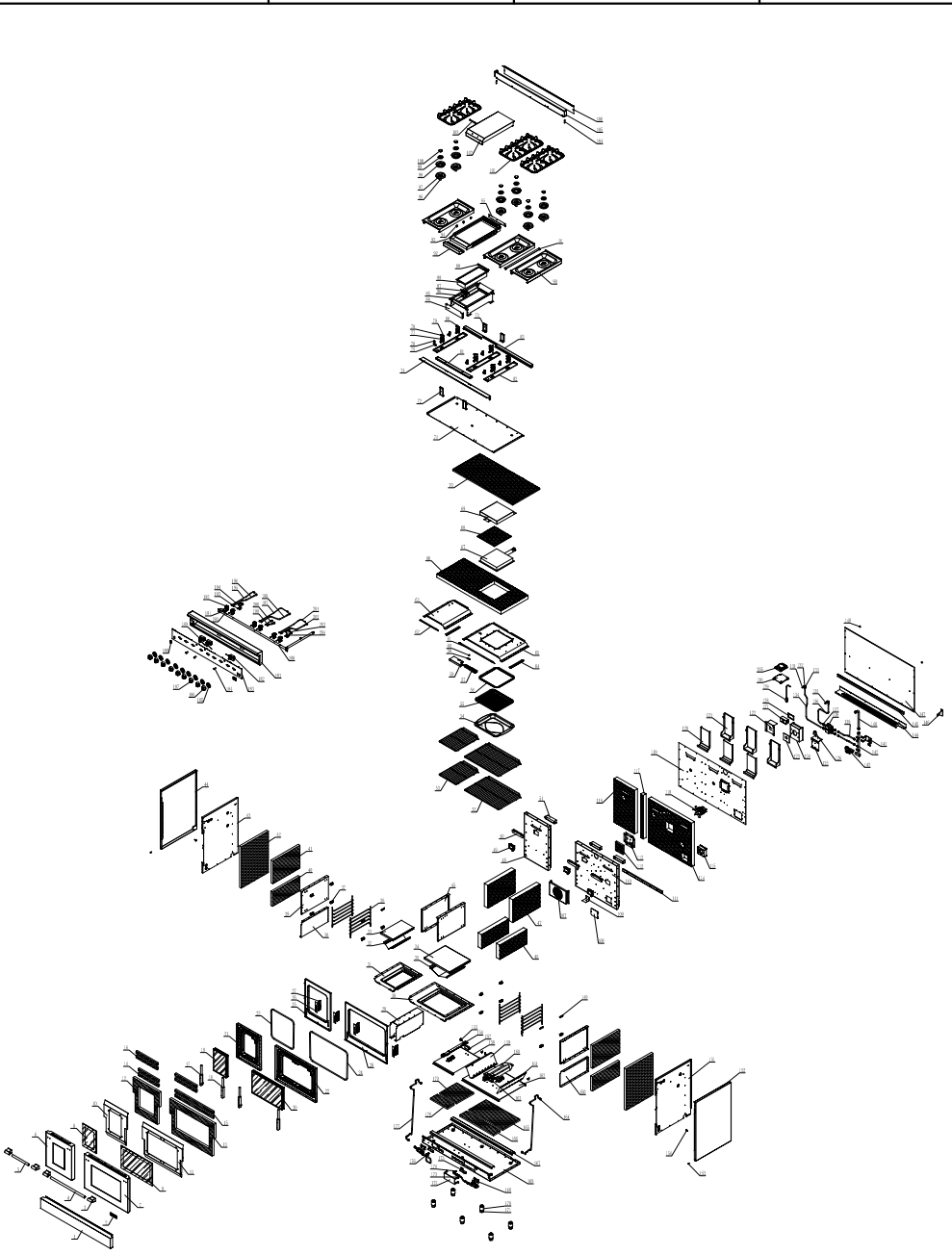
B

C

D

E

F



175	Main Valve Knob bezel	GL36002010AW	6	铸合金	174	Insulation-8	GL48001053AW	1	软垫碳纤维	87	Griddle Ignitor bracket	GL48001058AW	1	铸碳钢 1#1.0
176	Main Valve Knob	GL36002009AW	6	铸合金	173	Insulation-A	GL48001052AW	1	软垫碳纤维	86	Griddle Base	GL48001052AW	1	铸碳钢 1#0.0
177	Thermostat Knob Bezel	GL36002010AW	1	铸合金	172	Straight Burner Orifice	GL48001050AW	1	CL	85	Griddle Base Heat Baffle	GL48001052AW	1	铸碳钢 1#0.0
178	Thermostat Knob	GL36002010AW	2	铸合金	171	Shape Burner Orifice Bracket	GL36001002AW	2	铸碳钢 1#1.0	84	Supporter Base Bracket	GL48001052AW	1	铸碳钢 1#1.2
179	Griddle Thermostat knob bezel	GL48001013AW	3	铸合金	170	Shape Burner Orifice 2.2mm	GL48001050AW	1	CL	83	Stimmer Jet Holder Bracket	GL36001050AW	3	铸碳钢 1#1.2
180	Fan Switch	GL36001043AW	3	塑胶(黑色)	169	9/16" Stain Steel Pipe A	GL36001050AW	1	铸碳钢 1#0.0	82	Griddle Base Supporter Bracket	GL48001052AW	1	铸碳钢 1#1.2
182	Indicator Light	GL36001044AW	3	塑胶(黄色)	168	U shape Burner Heat Cover	GL36001001AW	1	铸碳钢 1#0.0	81	Electrode A	GL36001049AW	3	19H1 20MM
183	Control Panel	GL48002006AW	1	SS304(No.4 1#0.8)	167	Log down	GL36001084AW	6	铸碳钢 1#0.0	80	Electrode B	GL36001050AW	3	19H1 20MM
184	Open Thermostat	GL36001045AW	1	CL/AS 铸合金 ABS	166	Log upon	GL36001007AW	6	组件	79	Main Jet Holder nut	GL36001052AW	6	CL
185	Griddle Thermostat	GL48001016AW	2		165	Safety Valve Bracket B	GL36001006AW	2	铸碳钢 1#0.0	78	Main Jet Holder	GL36001052AW	6	CL
187	BuLlnose	GL48002003AW	1	组件	164	Bowl	GL48001001AW	1	铸碳钢 1#1.2	77	Stimmer Jet Holder Nut	GL36001050AW	6	CL
188	Manifold 4Port-48	GL48001014AW	1	A337	163	Log nut	GL36001015AW	6	铸碳钢 1#0.0	76	Stimmer Jet Holder	GL48001052AW	6	CL
189	Manifold Fixer Plate	GL36001076AW	6	铸碳钢 1#0.0	162	Base Supporter Bar	GL48001025AW	2	铸碳钢 1#1.2	75	Supporter Base	GL48001025AW	1	铸碳钢 1#1.2
190	Main Valve Bracket Screw	GL36001087AW	12		161	Insulation-6	GL48001051AW	1	软垫碳纤维	74	6 Points Ignitor	GL36002013AW	1	组件
191	Main Valve	GL36001055AW	6	CL/AS 铸合金 ABS	160	Insulation-6	GL48001050AW	1	软垫碳纤维	73	Supporter base bracket	GL48001052AW	2	铸碳钢 1#1.0
192	Main Valve Aluminum A	GL36001060AW	3		159	9/16" Stain Steel D	GL36001057AW	2		72	Open Gelling Liner	GL48001052AW	1	铸碳钢 1#0.0
193	1/2" Stain Steel B	GL36001052AW	3		158	Flame Burner Base Insulator	GL36001086AW	1	铸碳钢 1#1.0	71	Open Gelling Insulation 6#8	GL48001057AW	1	软垫碳纤维
194	Main Valve Aluminum B	GL36001058AW	3		157	Base Liner 30"	GL36001005AW	1	铸碳钢 1#0.0	70	Bowl Burner Cover	GL36001050AW	1	铸碳钢 1#0.0
195	1/2" Stain Steel A	GL36001053AW	3		156	Flame Burner Right U shape burner	GL36001005AW	1	铸碳钢 1#0.0	69	Insulation	GL36001058AW	1	软垫碳纤维
196	Stair Screw	740-010	2	镀锌胶	155	U shape Burner	GL36001032AW	1	不锈钢304 1#1.0	68	Bowl Burner	GL36001027AW	1	SS 因科镍50CC
197	Base Liner 30"	GL36001005AW	1	铸碳钢 1#0.0	154	Frame Taper U shape Burner	GL36001006AW	1	铸碳钢 1#0.0	67	Open Gelling Insulation 6#8	GL48001058AW	1	软垫碳纤维
198	Base Liner 18"	GL48001003AW	6		153	Base Liner 18"	GL48001003AW	1	铸碳钢 1#0.0	66	Open Gelling	GL36001014AW	1	SS304(No.4 1#1.0)
199	Straight Burner Bracket	GL48001005AW	1	铸碳钢 1#1.0	152	Straight Burner Bracket	GL48001005AW	1	铸碳钢 1#1.0	65	Thermostat Sensor Cover	GL36001027AW	2	SS304(No.4 1#0.8)
200	Base Liner Fixer Plate	GL36001076AW	4	铸碳钢 1#0.0	151	Base Liner Fixer Plate	GL36001076AW	4	铸碳钢 1#0.0	64	Open Gelling 18"	GL48001052AW	1	SS304(No.4 1#0.8)
201	Side Panel Right U shape Burner	GL36001003AW	1	铸碳钢 1#0.0	150	Side Panel Right U shape Burner	GL36001003AW	1	铸碳钢 1#0.0	63	18" Heat Baffle Oven	GL48001014AW	1	SS304(No.4 1#0.8)
202	Side Panel	GL36001078AW	1	SS430(No.4 1#0.8)	149	Side Panel Right U shape Burner	GL36001003AW	1	铸碳钢 1#0.0	62	30" Heat Baffle Oven	GL36001014AW	1	SS304(No.4 1#0.8)
203	Side Panel Liner Right	GL36001079AW	1	铸碳钢 1#0.0	148	Side Panel	GL36001078AW	1	铸碳钢 1#0.0	61	Bowl Burner Cover Plate	GL36001043AW	1	
204	Back Panel	GL48001055AW	1	铸碳钢 1#0.0	147	Back Panel	GL48001055AW	1	铸碳钢 1#0.0	60	Bowl Burner Plate	GL36001050AW	1	SS304(No.4 1#0.8)
205	Back Panel Supporter	GL48001055AW	1	铸碳钢 1#0.0	146	Back Panel Supporter	GL48001055AW	1	铸碳钢 1#0.0	59	Bowl Burner Ignitor Bracket	GL36001050AW	1	SS304(No.4 1#0.8)
206	Back Baffle	GL48001055AW	1	铸碳钢 1#0.0	145	Back Panel Supporter	GL48001055AW	1	铸碳钢 1#0.0	58	Surface Ignitor 4#0.1	GL36001042AW	1	SS304(No.4 1#0.8)
207	Regulator-48	GL48001013AW	1		144	Back Baffle	GL48001055AW	1	铸碳钢 1#0.0	57	Bowl Burner Press Bar	GL36001043AW	1	组件
208	Regulator Cover-48	GL48001017AW	1	A337	143	Regulator-48	GL48001013AW	1		56	Bowl Pan Cover	GL36001042AW	1	SPF 镀锌料 1#0.0
209	Regulator Cover-18"	GL48001017AW	1	A337	142	Manifold 4back-48	GL48001015AW	1	A337	55	Bowl Pan	GL36001041AW	1	SPF 镀锌料 1#0.0
210	1/4" Stain Steel	GL36001058AW	1		141	Regulator Cover-48	GL48001017AW	1	A337	54	Open Rack -18	GL48001023AW	2	SS304
211	9/16" Stain Steel C	GL36001058AW	3		140	1/4" Stain Steel	GL36001058AW	1		53	Open Rack -30"	GL36001012AW	2	SS304
212	Safety Valve	GL36001037AW	4	组件	139	9/16" Stain Steel C	GL36001058AW	3		52	Flue Bracket	GL36001052AW	3	铸碳钢 1#0.0
213	Safety Valve Connector	GL36001038AW	8	CL	138	Safety Valve	GL36001037AW	4	组件	51	Flue Baffle	GL36001012AW	3	SPF 1#0.0
214	9/16" Stain Steel C	GL48001017AW	1		137	Safety Valve Connector	GL36001038AW	8	CL	50	Open Light	GL36001047AW	3	铸碳钢 1#0.0
215	Bowl Burner Orifice	GL48001050AW	1	50CC	136	9/16" Stain Steel C	GL48001017AW	1		49	18" Open Back Panel	GL48001012AW	1	组件
216	9/16" Stain Steel Pipe C	GL36001058AW	3		135	Bowl Burner Orifice	GL48001050AW	1	50CC	48	Insulation -48	GL48001052AW	2	软垫碳纤维
217	Heat Burner Orifice Bezel	GL36001029AW	4	CL	134	9/16" Stain Steel Pipe C	GL36001058AW	3		47	Insulation -48	GL48001052AW	2	软垫碳纤维
218	Heat Burner Orifice Bezel	GL36001029AW	4	CL	133	Heat Burner Orifice Bezel	GL36001029AW	4	CL	46	Open Side Panel Right	GL48001052AW	2	SPF 1#0.0
219	Griddle Orifice	GL48001050AW	1	50CC	132	Heat Burner Orifice Bezel	GL36001029AW	4	CL	45	Side Panel	GL36001050AW	1	SS430(No.4 1#0.8)
220	Power Cord	GL36001009AW	1		131	Griddle Orifice	GL48001050AW	1	50CC	44	Side Panel Liner	GL36001090AW	1	铸碳钢 1#1.0
221	Power Box	GL36001017AW	1	铸碳钢 1#0.0	129	Power Cord	GL36001009AW	1		43	Insulation	GL36001090AW	2	软垫碳纤维
222	Relay	GL36001048AW	1	铸碳钢 1#0.8	128	Power Box	GL36001017AW	1	铸碳钢 1#0.0	42	Insulation -48	GL48001055AW	2	软垫碳纤维
223	Safety Valve Bracket 4#48	GL48001018AW	1	铸碳钢 1#0.0	127	Power Box	GL36001017AW	1	铸碳钢 1#0.0	41	Insulation	GL36001090AW	2	软垫碳纤维
224	Bowl Burner Fixer Plate	GL36001032AW	1	铸碳钢 1#0.8	126	Relay	GL36001048AW	1	铸碳钢 1#0.8	40	Open Side panel Left	GL48001052AW	2	SPF 1#0.0
225	Allica Plate	GL36001063AW	1	硅胶	125	Safety Valve Bracket 4#48	GL48001018AW	1	铸碳钢 1#0.0	39	Side Panel U shape Burner	GL36001040AW	1	铸碳钢 1#0.0
226	Power Box Bracket	GL36001016AW	1	铸碳钢 1#0.0	124	Bowl Burner Fixer Plate	GL36001032AW	1	铸碳钢 1#0.8	38	Porcelain Cover Oven Panel	GL36001028AW	8	SS304(No.4 1#0.8)
227	Open Flare A	GL36001015AW	3	铸碳钢 1#0.0	123	Allica Plate	GL36001063AW	1	硅胶	37	Open Rack Support Left	GL36002013AW	1	焊接组件
228	Open Flare B	GL36001011AW	3	铸碳钢 1#0.0	122	Power Box Bracket	GL36001016AW	1	铸碳钢 1#0.0	36	Open Rack Support Right	GL36002013AW	1	焊接组件
229	Back Panel Liner	GL48001015AW	1	铸碳钢 1#0.0	121	Open Flare A	GL36001015AW	3	铸碳钢 1#0.0	35	30" Open Flame Liner	GL36001028AW	1	铸碳钢 1#0.0
230	Fan	GL36001046AW	1		120	Open Flare B	GL36001011AW	3	铸碳钢 1#0.0	34	30" Open Base Cover	GL36001012AW	1	组件
231	Insulation 48	GL48001063AW	1	软垫碳纤维	119	Back Panel Liner	GL48001015AW	1	铸碳钢 1#0.0	32	18" Open Base Cover	GL48001018AW	1	组件
232	Back Panel Insulation 18"	GL48001059AW	1	软垫碳纤维	118	Fan	GL36001046AW	1		31	18" Open Base	GL48001018AW	1	组件
233	Regulator Cover	GL36001021AW	1	铸碳钢 1#0.8	117	Insulation 48	GL48001063AW	1	软垫碳纤维	30	30" Open Base	GL36001030AW	1	组件
234	Open Back Insulation 30"	GL48001058AW	1	软垫碳纤维	116	Back Panel Insulation 18"	GL48001059AW	1	软垫碳纤维	29	Base Insulation Plate	GL48001052AW	1	铸碳钢 1#0.0
235	Fan Bracket A	GL36001059AW	1	铸碳钢 1#0.8	115	Regulator Cover	GL36001021AW	1	铸碳钢 1#0.8	28	30" Door Front Frame	GL48001018AW	1	SS304(No.4 1#1.0)
236	Insulation	GL36001099AW	1	软垫碳纤维	114	Open Back Insulation 30"	GL48001058AW	1	软垫碳纤维	27	Receiver	GL36001099AW	4	50CC
237	Open Back Panel 30"	GL48001011AW	1	组件	113	Fan Bracket A	GL36001059AW	1	铸碳钢 1#0.8	26	Door Front Frame plates	GL36001086AW	4	SS430(No.4 1#0.8)
238	U shape Burner Bracket	GL36001007AW	1	铸碳钢 1#0.0	112	Insulation	GL36001099AW	1	软垫碳纤维	25	18" Door Front Frame	GL48001052AW	1	SS304(No.4 1#1.0)
239	Regulator Baffle	GL36001025AW	1	铸碳钢 1#0.0	111	Open Back Panel 30"	GL48001011AW	1	组件	24	Gasket*20	GL36001001AW	1	耐火垫碳纤维
240	Fan Cover	GL36001004AW	1	SPF 1#0.0	110	U shape Burner Bracket	GL36001007AW	1	铸碳钢 1#0.0	23	Gasket*8	GL48001011AW	1	耐火垫碳纤维
241	Back Splash Plate	GL48001048AW	1	SS304(No.4 1#0.8)	109	Regulator Baffle	GL36001025AW	1	铸碳钢 1#0.0	22	30" Door Front Inner	GL36001050AW	1	组件
242	Back Splash B	GL48002006AW	1	SS304(No.2B 1#0.6)	108	Fan Cover	GL36001004AW	1	SPF 1#0.0	21	18" Door Frame Inner	GL48001063AW	1	组件
243	Back Splash A	GL48002003AW	1	SS304(No.4 1#0.8)	107	Back Splash Plate	GL48001048AW	1	SS304(No.4 1#0.8)	20	Open Frame assembly drawing	GL36001028AW	1	组件
244	Griddle Cover Handle	GL48001025AW	1		106	Back Splash B	GL48002006AW	1	SS304(No.2B 1#0.6)	19	Open Vinter assembly drawing	GL48001063AW	1	组件
245	Griddle Cover	GL48001080AW	1	组件	105	Back Splash A	GL48002003AW	1	SS304(No.4 1#0.8)	18	Hinge Left	GL36001066AW	1	50CC
246	Looking Grate -36	GL36001080AW	3	铸钢(带有漆膜)	104	Griddle Cover Handle	GL48001025AW	1		17	Hinge Right	GL36001066AW	1	50CC
247	Inner Burner Head	GL36001014AW	6	CL	103	Griddle Cover	GL48001080AW	1	组件	16	30" Door Insulation C	GL48001052AW	4	软垫碳纤维
248	Inner Burner Base	GL36001015AW	6	CL	102	Looking Grate -36	GL36001080AW	3	铸钢(带有漆膜)	15	30" Door Insulation B	GL36001050AW	2	软垫碳纤维
249	Outer Burner Head	GL36001016AW	6	CL	101	Inner Burner Head	GL36001014AW	6	CL	14	18" Door Insulation B	GL48001018AW	2	软垫碳纤维
250	Outer Burner Base	GL36001017AW	6	CL	100	Inner Burner Base	GL36001015AW	6	CL	13	30" Door Insulation A	GL36001018AW	1	软垫碳纤维
251	Outer Burner Base pipe	GL36001018AW	6	CL	99	Outer Burner Head	GL36001016AW	6	CL	12	18" Door Insulation A	GL48001063AW	1	软垫碳纤维
252	Griddle Fixer Plate Back	GL48001040AW	1	铸碳钢 1#0.0	98	Outer Burner Base	GL36001017AW	6	CL	11	30" Door Liner	GL36001025AW	1	铸碳钢 1#0.0
253	Griddle Thermostat Sensor Cover	GL48001041AW	3	铸碳钢 1#0.8	97	Outer Burner Base pipe	GL36001018AW	6	CL	10	18" Door Liner	GL48001025AW	1	铸碳钢 1#0.0
254	Griddle	GL48001050AW	1	组件	96	Griddle Fixer Plate Back	GL48001040AW	1	铸碳钢 1#0.0	9	30" Gray Glass	GL36001028AW	1	耐火垫碳纤维
255	Griddle Tray	GL48001051AW	1	组件	95	Griddle Thermostat Sensor Cover	GL48001041AW	3	铸碳钢 1#0.8	8	18" Gray Glass	GL48001028AW	1	耐火垫碳纤维
256	Stimmer Pan trim	GL48001025AW	1	SS304(No.4 1#0.8)</										