



IMPORTANT NOTE:

Locate the Specification Label on unit to determine exact Model Name and electrical specifications. This information is needed to identify the correct replacement parts. See exploded view illustration(s) for Specification Label location.

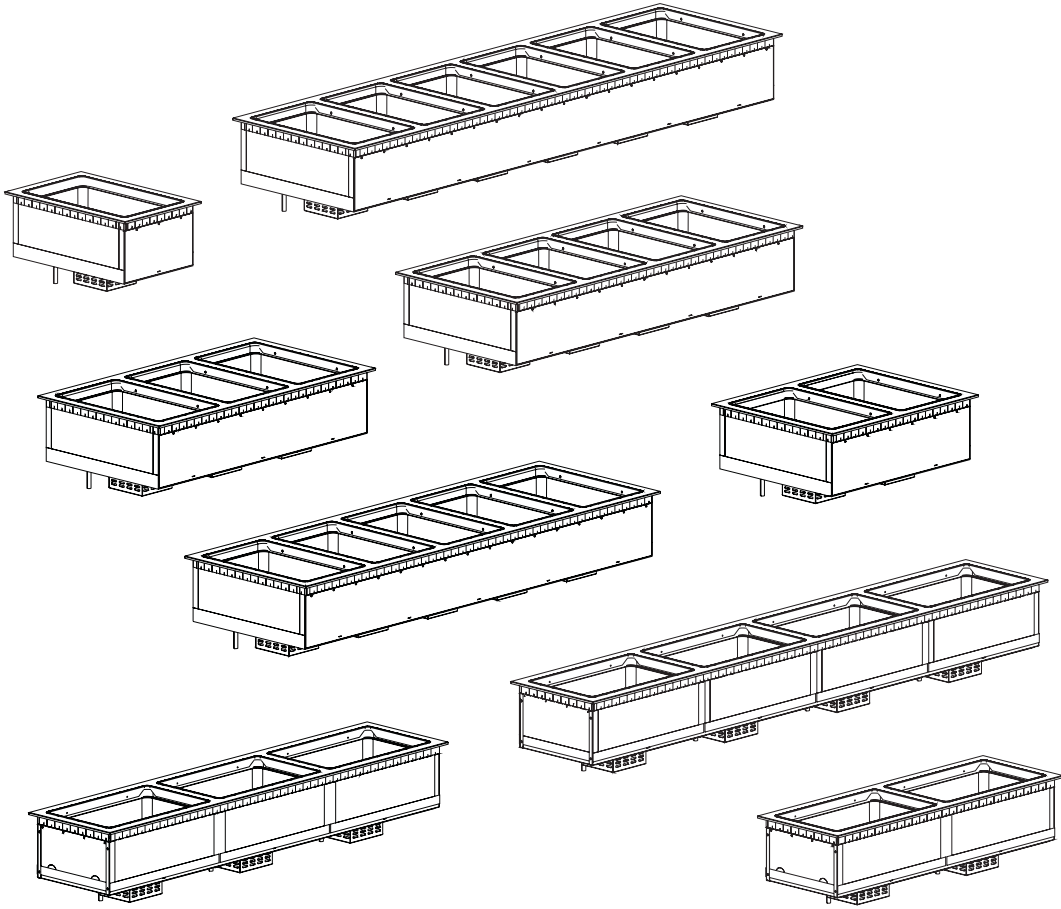


Use of replacement parts other than those supplied by Hatco Corporation will void all warranties and may result in damage to the unit or injury to personnel.

Modular Built-In Dry Heated Wells

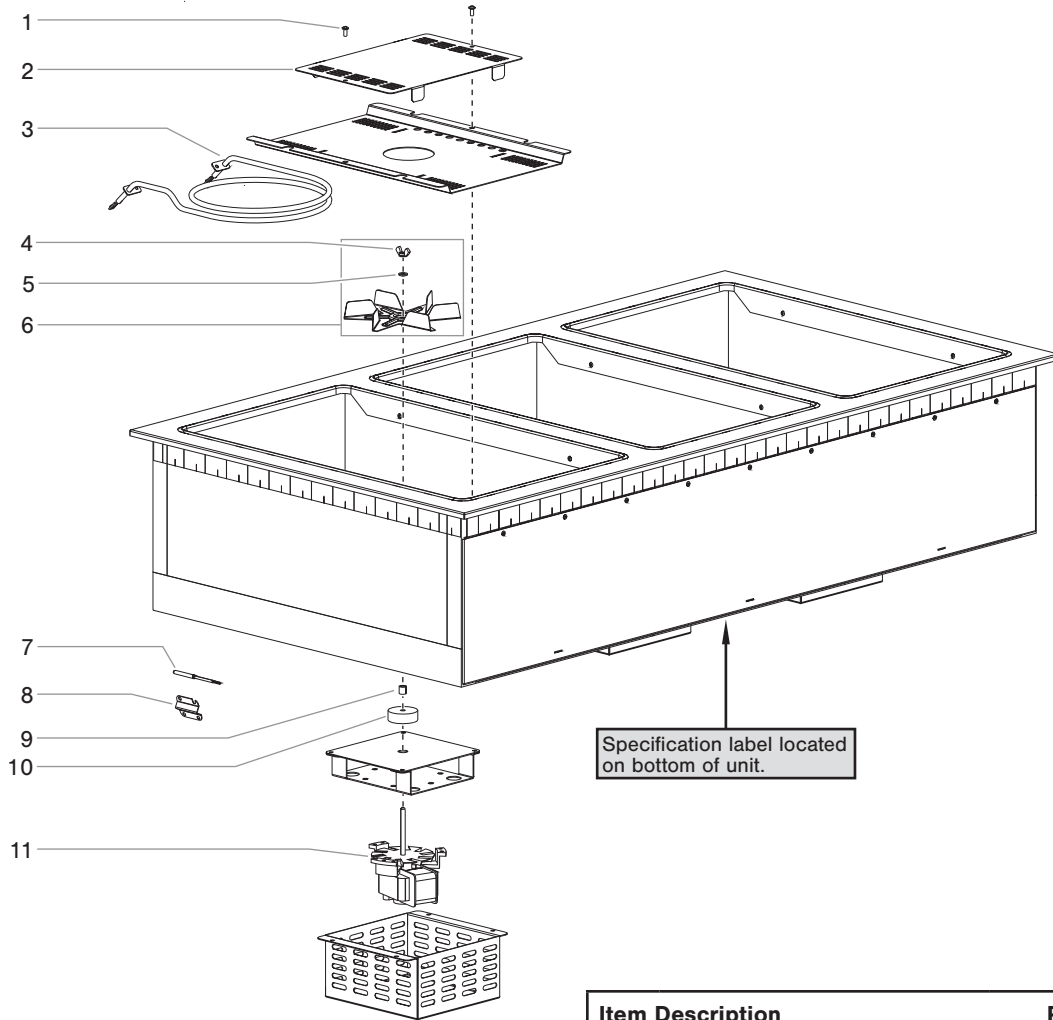
DHWBI and DHWBI-S Series

<u>Model Name</u>	<u>Page</u>
All Models.....	2
Control Box.....	3



Replacement Parts List

Hatco Modular Built-In Dry Heated Wells DHWBI and DHWBI-S Series



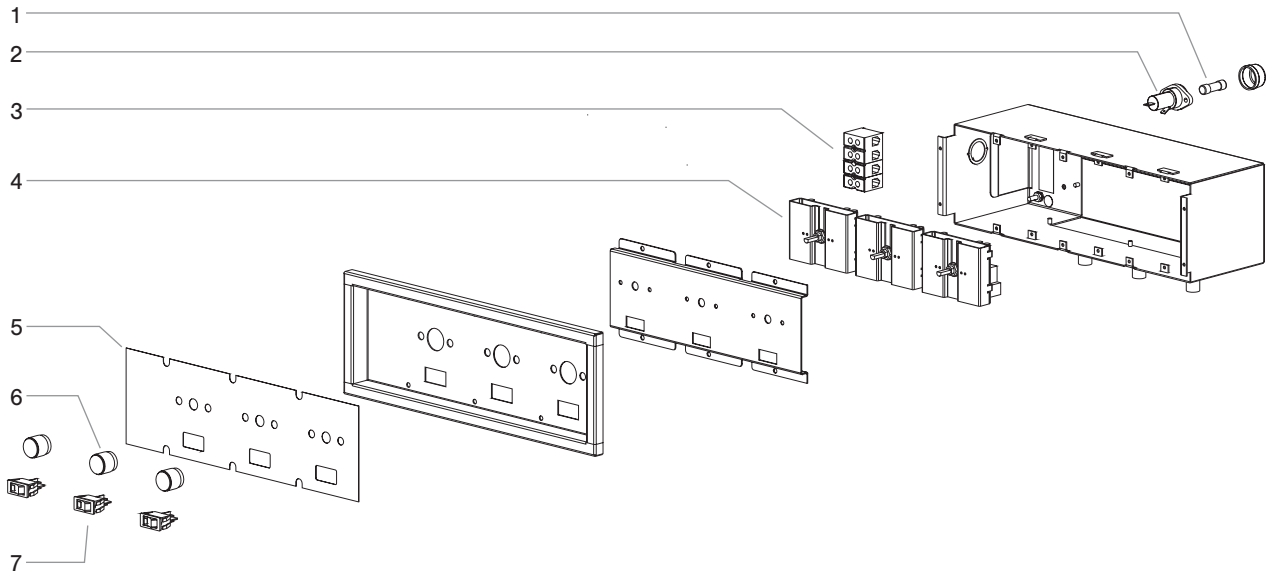
Item Description	Part No.	Qty.
1 Screw, Cover	05.04.301.00	2-12
2 Bottom Cover	04.42.885.00	1-6
3 Heating Element	02.08.675.00	1-6
4 Wing Nut	05.04.946.00	1-6
5 Washer	05.11.005.00	1-6
6 Fan Blade (includes Items 4 and 5)	R02.12.159.00	1-6
7 Probe, Thermostat	02.01.440.00	1-6
8 Probe Bracket	04.42.972.00	1-6
9 Bushing, Bronze	02.20.514.00	1-6
10 Seal, Motor Shaft	04.42.797.00	1-6
11 Fan Motor w/ Heat Slinger	02.12.154.00	1-6
12 Power Cords (not shown)		
NEMA 5-30P *	02.18.039.00	1
NEMA L14-20P *	02.18.128.00	1
NEMA 5-20P *	02.18.089.00	1
NEMA 5-20P	02.18.082.00	1
NEMA 5-15P	02.18.030.00	1
13 Cord Grip (not shown)	R02.20.259.00	1

Item Description	Part No.	Qty.
Wiring Diagram		
DHWBI-1, 120 V	10-01-1220	
DHWBI-2 and DHWBI-S2 120 V	10-01-1221	
120/208-240 V	10-01-1350	
DHWBI-3 and DHWBI-S3 120 V	10-01-1222	
120/208-240 V	10-01-1351	
DHWBI-4 and DHWBI-S4 120/208-240 V, single control	10-01-1223	
120/208-240 V, split controls	10-01-1343	
120 V, split controls	10-01-1346	
DHWBI-5 120/208-240 V, single control	10-01-1224	
120/208-240 V, split controls	10-01-1344	
120 V, split controls	10-01-1347	
DHWBI-6, 120/208-240 V 120/208-240 V, single control	10-01-1225	
120/208-240 V, split controls	10-01-1345	
120 V, split controls	10-01-1348	

* Units configured with split/dual controls have a quantity of "2" for the appropriate power cord (each control box is equipped with a power cord).

NOTE: Quantities shown as a range are determined by the number of wells in a unit (example = 2-12).

Control Box DHWBI and DHWBI-S Series



Item Description	Part No.	Qty.
1 Fuse	R02.03.052.02	1-6
2 Fuse Holder	02.19.246.00	1-6
3 Terminal Block	R02.15.047.00	1
4 Controller, Electronic	02.16.190.00	1-6
5 Control Label		
1 Pan Control Box	07.03.861.00	1
2 Pan Control Box	07.03.862.00	1
3 Pan Control Box	07.03.863.00	1
4 Pan Control Box	07.03.864.00	1
5 Pan Control Box	07.03.865.00	1
6 Pan Control Box	07.03.866.00	1
6 Knob, Control	05.30.082.00	1-6
7 Rocker Switch	02.19.080.00	1-6

NOTE: The last four digits in a ten digit numerical serial number are the manufacturing date code: 9625062204

Year 2022
Week Four