



# POWERMITE® Gas Booster Heater

---

## *PMG Series*

---

*PMG-60*

*PMG-100*

*PMGH-60*

*PMG-200*

---

**REPLACEMENT  
PARTS LIST**

---

**HATCO POWERMITE®  
PMG-60 GAS BOOSTER HEATER**

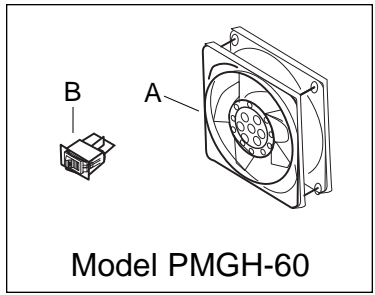
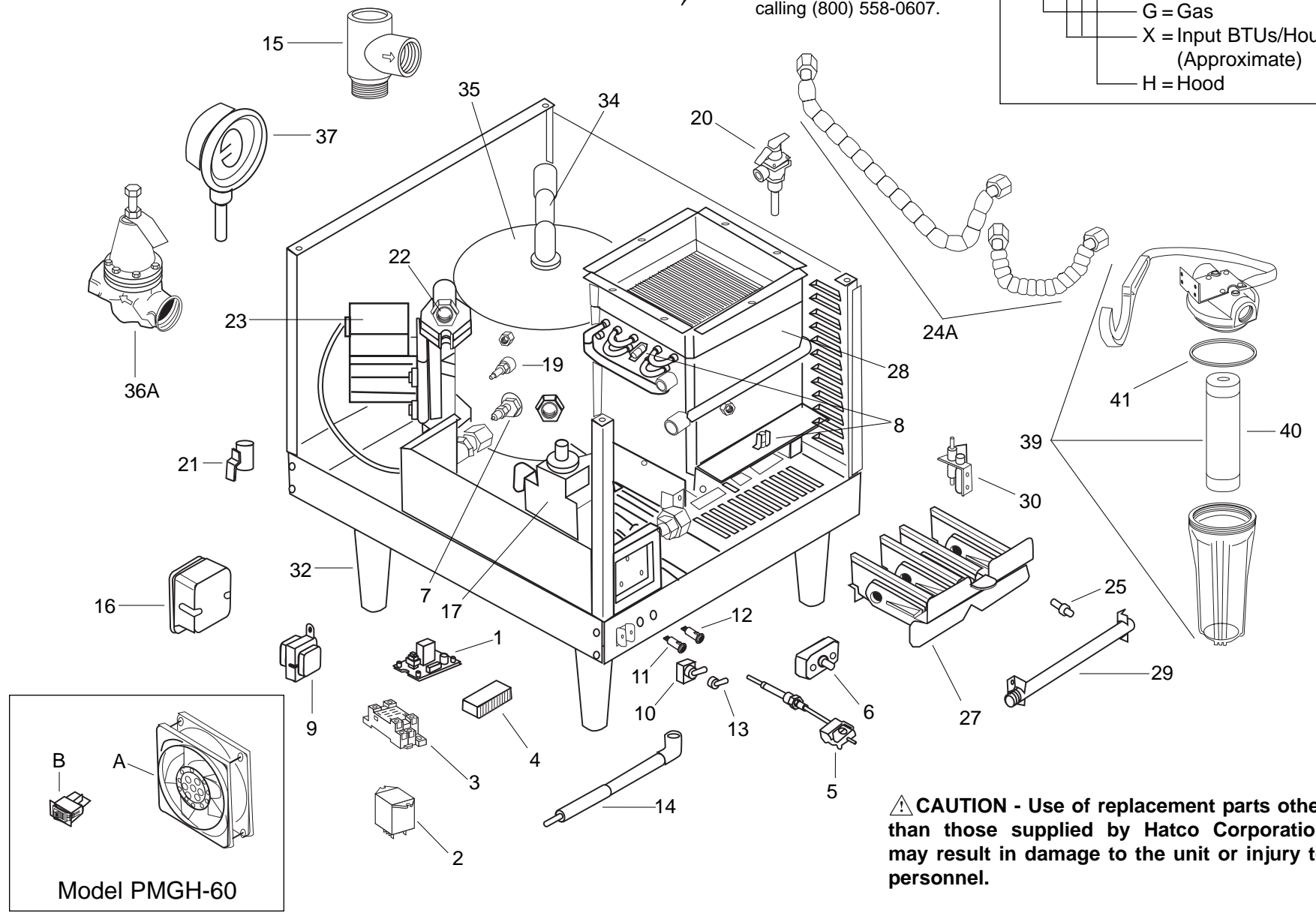


24 Hour 7 Day Parts  
& Service Assistance  
available in the United  
States and Canada by  
calling (800) 558-0607.

**Model Designation**

PMG-XXH

- P = Power
- M = Mite
- G = Gas
- X = Input BTUs/Hour  
(Approximate)
- H = Hood



**⚠ CAUTION - Use of replacement parts other than those supplied by Hatco Corporation may result in damage to the unit or injury to personnel.**

### PARTS COMMON TO ALL PMG-60 MODELS

ITEM	DESCRIPTION	PART NO.	QTY.	ITEM	DESCRIPTION	PART NO.	QTY.
1	Low Water Cut Off Board 120V	R02.01.210.00	1	24B	Water Line Gasket*	05.06.066.00	4
2	Relay 24VAC Relay DPDT	02.01.116.00	1	25	NAT Gas Orifice #55	03.12.002.00	8
3	Socket for Mini Relay	02.01.125.00	1	26	LP Gas Orifice #68*	03.12.003.00	8
4	Sectional T-Block Complete	02.15.027.00	1	27	Burner Blade Assembly	R03.12.007.00	1
5	Tank High Limit, Manual Reset	02.16.116.00	1	28	Heat Exchanger	R03.12.008.00	1
6	Control Thermostat with Probe	R02.16.068.00	1	29	Gas Manifold	03.12.009.00	1
7	Temperature Control Probe	R02.16.069.00	1	30	NAT Gas Pilot Assembly with Orifice	03.12.010.00	1
8	Flame Rollout High Limit/ Heat Exchanger High Limit	02.16.106.00	2	31	LP Gas Pilot Conversion - Orifice Only*	03.12.011.00	1
9	Transformer 120/24V (40VA)	02.17.034.00	1	32	6" (152 mm) Plastic Legs★	05.30.069.00	4
10	Toggle Switch, On/Off	R02.19.008A.00	1	33	6" (152 mm) Stainless Legs★	05.30.070.00	4
11	Indicator Light, Green 120 Volt	02.19.070G.00	1	34	Water Manifold 3/4" Assembly	R03.04.004.00	1
12	Indicator Light, Red 120 Volt	02.19.070R.00	1	35	Tempering Tank	01.05.003.00	1
13	Boot Cover, Toggle Switch	02.20.040.00	1	36A	Pressure Reducing Valve, Iron	03.02.004.00	1
14	Pilot Spark Cable, High Voltage	02.21.019.00	1	36B	Pressure Reducing Valve, Brass* (Optional)	03.02.015.00	1
15	Back Pressure Relief Valve (Optional)	03.02.039.00	1	37	Temperature Pressure Gauge	03.01.003.00	2
16	Ignition Module	R02.21.022.00	1	38	LP Gas Conversion Kit, (Includes LP Gas Valve, Orifices and Pilot)*	R00.02.0004.00	1
17	Natural Gas Combination Valve	02.21.023.00	1	39	Water Treatment Canister and Cartridge	03.05.061.00	1
18	LP Gas Combination Valve - Conversion Kit*	02.21.024.00	1	40	Cartridge Only	03.05.061A.00	1
19	Low Water Cut Off Probe	02.40.001.00	1	41	O-Ring Gasket	03.05.061B.00	1
20	T/P Relief Valve	03.02.020.00	1				
21	Manual Shut Off Valve	03.02.025.00	1				
22	Pump Flange Kit with Bolts	03.05.026.00	1				
23	Recirculating Pump	R03.05.027.00	1				
24A	Flexible Water Lines†	R03.05.049.00	2				

\* Not Shown

★Units manufactured in October 1999 or before use part number 04.01.013.00 for the replacement leg.

† Gasket should be replaced at each joint being serviced using Item #24B.

*NOTE: Order Kit, Item 38, when converting units to LP gas.*

*NOTE: Consult factory if replacing Orifices or Burner Assembly to ensure proper sizing.*

*NOTE: When calling for parts/service, please supply altitude of installation location and fuel type.*

### PARTS COMMON TO ALL PMGH-60 MODELS

ITEM	DESCRIPTION	PART NO.	QTY.	ITEM	DESCRIPTION	PART NO.	QTY.
A	Blower Motor - 120 Volt	02.12.001.00	1	B	On/Off Rocker Switch	02.19.080.00	1



## PARTS COMMON TO ALL PMG-100 & PMG-200 MODELS

ITEM	DESCRIPTION	PART NO.	QTY.	ITEM	DESCRIPTION	PART NO.	QTY.
1	Low Water Cut Off Board 120V	R02.01.210.00	1	26A	Heat Exchanger (PMG-100)	R03.12.013B.00	1
2	Relay 24VAC Relay DPDT	02.01.116.00	1	26B	Heat Exchanger (PMG-200)	R03.12.017B.00	1
3	Socket for Mini Relay	02.01.125.00	1	27A	Gas Manifold (PMG-100)	03.12.015.00	1
4A	Sectional T-Block 30P Control	02.15.032.00	1	27B	Gas Manifold (PMG-200)	03.12.019.00	1
4B	Sectional T-Block 8P Distribution	02.15.033.00	1	28A	NAT Gas Pilot Assembly with Orifice	03.12.010.00	1
5	Tank High Limit, Manual Reset	02.16.116.00	1	28B	LP Pilot Conversion Orifice*	03.12.011.00	1
6	Control Thermostat with Probe	R02.16.068.00	1	29A	6" (152 mm) Plastic Legs★	05.30.069.00	4
7	Temperature Control Probe	R02.16.069.00	1	29B	6" (152 mm) Stainless Legs★	05.30.070.00	4
8	Heat Exchanger High Limit	02.16.106.00	1	30	Heat Trap Assembly	AS.141.00	1
9	Transformer 120/24V (40VA)	02.17.034.00	1	31	Tempering Tank	01.05.005.00	1
10	Toggle Switch DPST	R02.19.008A.00	1	32A	Pressure Reducing Valve, Iron	03.02.004.00	1
11	Indicator Light, Green 120 Volt	02.19.070G.00	1	32B	Pressure Reducing Valve, Brass* (Optional)	03.02.015.00	1
12	Indicator Light, Red 120 Volt	02.19.070R.00	1	33	Temperature Pressure Gauge	03.01.003.00	2
13	Boot Cover, Toggle Switch	02.20.040.00	1	34A	Flexible Gas Line (PMG-100)	03.12.014.00	1
14	Pilot Spark Cable, High Voltage	02.21.026.00	1	34B	Flexible Gas Line (PMG-200)	03.12.018.00	1
15	Back Pressure Relief Valve (Optional)	03.02.039.00	1	35	Cooling Fan (PMG-200 Only)	02.12.008A.00	1
16	Ignition Module	R02.21.022.00	1	36	Straight Exhaust Adapter	R04.28.052.00	1
17A	Natural Gas Combination Valve	02.21.025.00	1	37	Right Angle Exhaust Adapter	R04.28.053.00	1
17B	LP Gas Conversion Kit*	02.21.024.00	1	38	Exhaust Outlet Box	R04.28.077.00	1
18	Low Water Cut Off Probe	02.40.001.00	1	39	Exhaust Blower	R02.12.052.00	1
19	T/P Relief Valve	03.02.022.00	1	40A	Pressure Switch (PMG-100)	02.21.027.00	1
20	Manual Shut Off Valve	03.02.027.00	1	40B	Pressure Switch (PMG-200)	02.21.028.00	1
21	Pump Flange Kit with Bolts	03.05.026.00	1	41	LP Gas Conversion Kit (Includes LP Gas Valve, Orifices and Pilot)*	R00.02.0005.00	1
22	Recirculating Pump	R03.05.052.00	1	42	Water Treatment Canister and Cartridge	03.05.061.00	1
23A	Flexible Water Lines†	R03.05.049.00	2	43	Cartridge Only	03.05.061A.00	1
23B	Water Line Gasket*	05.06.066.00	4	44	O-Ring Gasket	03.05.061B.00	1
24A	NAT Gas Orifice #34 (PMG-100)	03.12.016.00	3	45	Insulation, Exhaust Blower*	05.05.085.00	1
24B	NAT Gas Orifice #35 (PMG-200)	03.12.020.00	6				
24C	LP Gas Orifice #50 (PMG 100/200)	03.12.021.00	3/6				
24D	High Altitude Blank Orifice Kit*	R03.12.023.00	1				
25	Burner Tube (PMG-100/200)	03.12.012.00	3/6				

\* Not Shown

★ Units manufactured in the month of July 1999 or before use part number 04.01.013.00 for the replacement leg.

† Gasket should be replaced at each joint being serviced using Item #22B.

NOTE: Order Kit, Item 41, when converting units to LP gas.  
NOTE: Consult factory if replacing Orifices or Burner Assembly to ensure proper sizing.  
NOTE: When calling for parts/service, please supply altitude of installation location and fuel type.

NOTE: The last four digits in a ten digit numerical serial number is the manufacturing date code. Example: Serial number 1021059907 has a date code of 9907 which indicates the following: 9907

Year 1999 —  —  — Month seven, July

Please also note, effective January 2001 the serial number date code was changed to reflect the year and week of manufacture.

Example: xxxxxx 0124  
Year 2001 —  —  — Week twenty-four