



CATALOG OF REPLACEMENT PARTS

A.) HCM450 CUTTER/MIXER



ML-141055

ML-141058

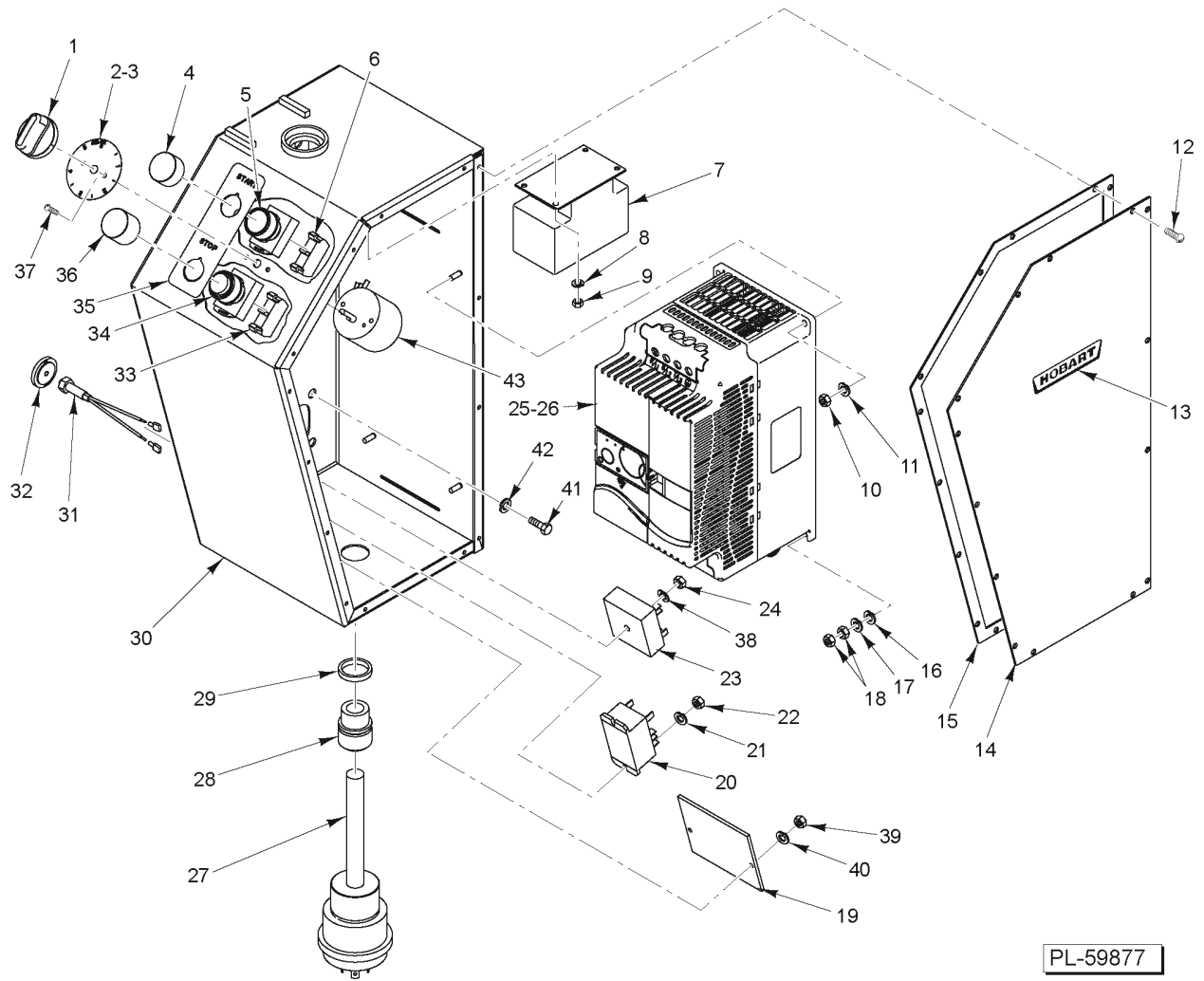
ML-141144

PRIOR ML COVERED IN THIS MANUAL

ML-136226

Table of Contents

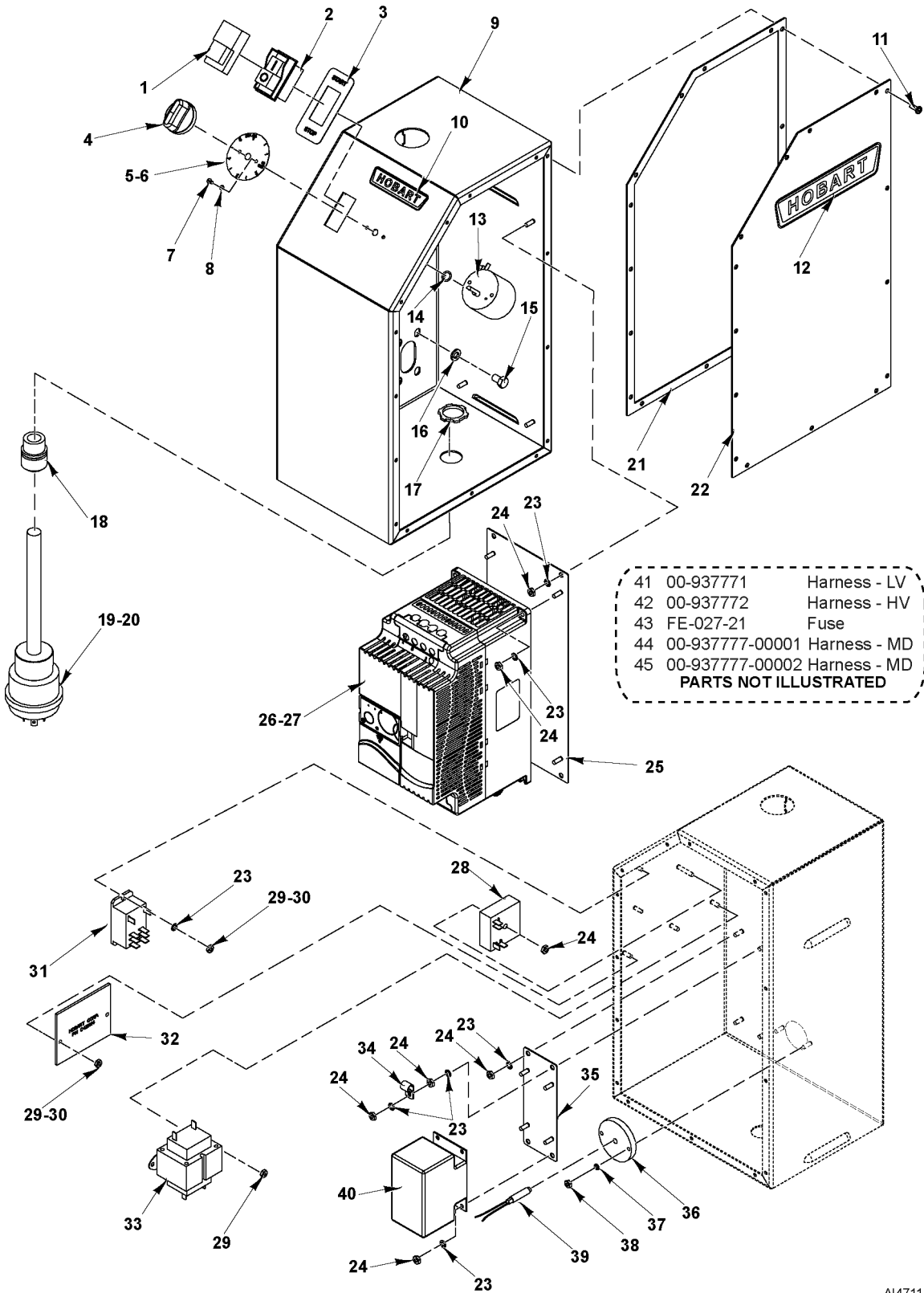
5	CONTROL BOX ASSEMBLY
7	CONTROL BOX ASSEMBLY (ML-141144)
9	BOWL LID ASSEMBLY
11	HANDLE LOCK
13	BOWL AND MOTOR ASSEMBLY (PREVIOUS CONSTRUCTION)
15	BOWL AND MOTOR ASSEMBLY (CURRENT CONSTRUCTION)
17	FRAME ASSEMBLY
19	LABELS



CONTROL BOX ASSEMBLY

CONTROL BOX ASSEMBLY

ILLUS.	PART NO.	NAME OF PART	AMT.
1	00-914914	Knob - Timer.....	1
2	00-944029	Overlay, Timer 60 Hz.....	1
3	00-938526	Overlay, Timer 50 Hz.....	1
4	00-873427	Cap - Protective.....	1
5	00-478752-00003	Switch - Operator (Start).....	1
6	00-087711-322-3	Block - Contact (NO).....	1
7	00-087713-102-1	Contact (30 Amp.) (3 Pole).....	1
8	WL-008-13	Lockwasher #10 Internal Shakeproof.....	4
9	NS-009-22	Nut 10-24 Hex.....	4
10	NS-009-22	Nut 10-24 Hex.....	3
11	WL-008-13	Lockwasher #10 Internal Shakeproof.....	3
12	SC-131-30	Mach. Screw 10-32 x 1/2 Phil. Pan Hd. (SST).....	14
13	00-118365	Logo.....	1
14	00-944056	Cover - Control Box (Incls. Items 12 & 14).....	1
15	00-944023	Gasket - Control Box.....	1
16	WL-019-24	Lockwasher #10 Helical.....	1
17	WL-008-13	Lockwasher #10 Internal Shakeproof.....	1
18	NS-009-22	Nut 10-24 Hex.....	2
19	00-121014	Board - Terminal.....	1
20	00-087714-042-2	Relay (2-Pole).....	1
21	WL-008-13	Lockwasher #10 Internal Shakeproof.....	2
22	NS-010-11	Nut 8-32 Hex (Brass).....	2
23	00-944016	Relay - Time Delay.....	1
24	NS-009-22	Nut 10-24 Hex.....	1
25	00-944017-00004	Controller - Drive (7.5 Hp., 230 V.) (ML-141055 & ML-141058).....	1
26	00-944017-00003	Controller - Drive (7.5 Hp., 230 V.) (ML-136226).....	1
27	00-117612-00022	Cord & Plug Assy. (250 V., 30 Amp.) (Incls. Cover).....	1
28	FE-014-14	Strain Relief.....	1
29	FE-007-12	Lock Nut 3/4 Electrical.....	1
30	00-944057	Box - Control (Incls. Items 2 & 34).....	1
31	00-916902-00003	Switch - Reed.....	1
32	00-944018	Plug - Control Box.....	1
33	00-087711-322-4	Block - Contact (NC).....	1
34	00-478752-00008	Switch Assy. (Stop).....	1
35	00-875475	Label (Start/Stop) (60 Hz.).....	1
36	00-873427-00002	Cap - Protective.....	1
37	SC-025-16	Mach. Screw 5-40 x 1/4 Slotted Bndg. Hd. (SST).....	2
38	WL-008-13	Lockwasher #10 Internal Shakeproof.....	1
39	NS-009-22	Nut 10-24 Hex.....	2
40	WL-008-13	Lockwasher #10 Internal Shakeproof.....	2
41	SC-041-09	Cap Screw 5/16-18 x 1/2 Hex Hd. (SST).....	4
42	WL-003-47	Lockwasher 5/16 Helical.....	4
43	00-294650-04-12	Timer Assy.....	1



CONTROL BOX ASSEMBLY (ML-141144)

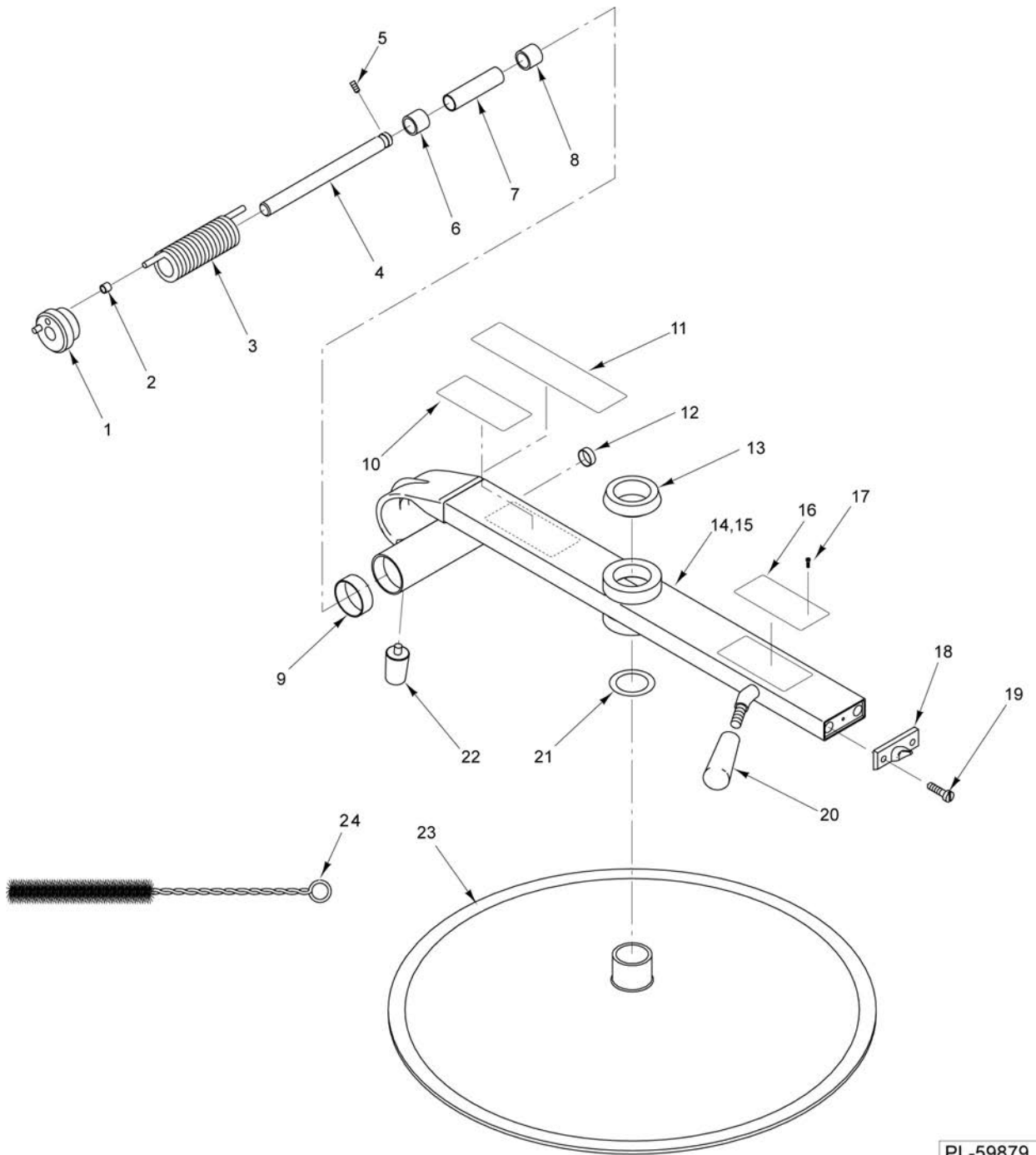
AI4711

CONTROL BOX ASSEMBLY (ML-141144)

ILLUS. PL-AI4711	PART NO.	NAME OF PART	AMT.
1	00-915731	Boot - Switch.....	1
2	00-087711-360-2	Switch - START / STOP.....	1
*3	00-937782	Label - START / STOP.....	1
4	00-914914	Knob - Timer.....	1
5	00-944029	Overlay, Timer 60 Hz.....	1
6	00-938526	Overlay, Timer 50 Hz.....	1
7	SC-025-16	Mach. Screw 5-40 x 1/4 Slotted Bndg. Hd. (SST).....	2
8	OR-001-39	O-Ring.....	2
9	00-937716	Box - Control.....	1
10	00-118364	Logo (Hobart).....	1
11	SC-131-30	Mach. Screw 10-32 x 1/2 Phil. Pan Hd. (SST).....	15
12	00-118365	Logo.....	1
13	00-294650-04-12	Timer Assy.....	1
14	OR-001-40	O-Ring.....	1
15	SC-041-09	Cap Screw 5/16-18 x 1/2 Hex Hd. (SST).....	4
16	WS-003-47	Washer (SST).....	4
17	FE-007-12	Lock Nut 3/4 Electrical.....	1
18	FE-014-14	Strain Relief.....	1
*19	00-117612-00022	Cord & Plug Assy. (230V.).....	1
**20	00-117613-00001	Cord Assy. (460V).....	1
21	00-937717	Gasket - Control Box.....	1
22	00-937718	Cover - Control Box.....	1
23	WL-008-13	Lockwasher #10 Internal Shakeproof.....	19
24	NS-009-22	Nut 10-24 Hex.....	19
25	00-937708	Plate - Controller Mounting.....	1
*26	00-937958-00004	Controller - Drive (10HP).....	1
**27	00-937958-00005	Controller - Drive (10HP).....	1
28	00-944016	Relay - Time Delay.....	1
*29	NS-010-11	Nut 8-32 Hex (Brass).....	2
**30	NS-010-11	Nut 8-32 Hex (Brass).....	3
31	00-087714-042-2	Relay (2-Pole).....	1
32	00-121014	Board - Terminal.....	1
**33	00-916905-00004	Transformer (25VA).....	1
*34	00-078752-00012	Clamp - Cable.....	1
35	00-937707	Plate - Contactor Mounting.....	1
36	00-944018	Plug - Control Box.....	1
37	WL-003-12	Lockwasher #8 Helical.....	2
38	NS-009-12	Nut 8-32 Hex.....	2
39	00-916902-00003	Switch - Reed.....	1
40	00-087713-102-1	Contactor (30 Amp.) (3 Pole).....	1
*41	00-937771	Harness - Low Voltage.....	1
**42	00-937772	Harness - High Voltage (Incls. Item 41 and Fuse Holder).....	1
43	FE-027-21	Fuse (250V, 0.1A SLO-BLO).....	1
44	00-937777-00001	Harness - Motor / Drive.....	1
45	00-937777-00002	Harness - Motor / Drive.....	1

* Low Voltage (200-240V) Configuration

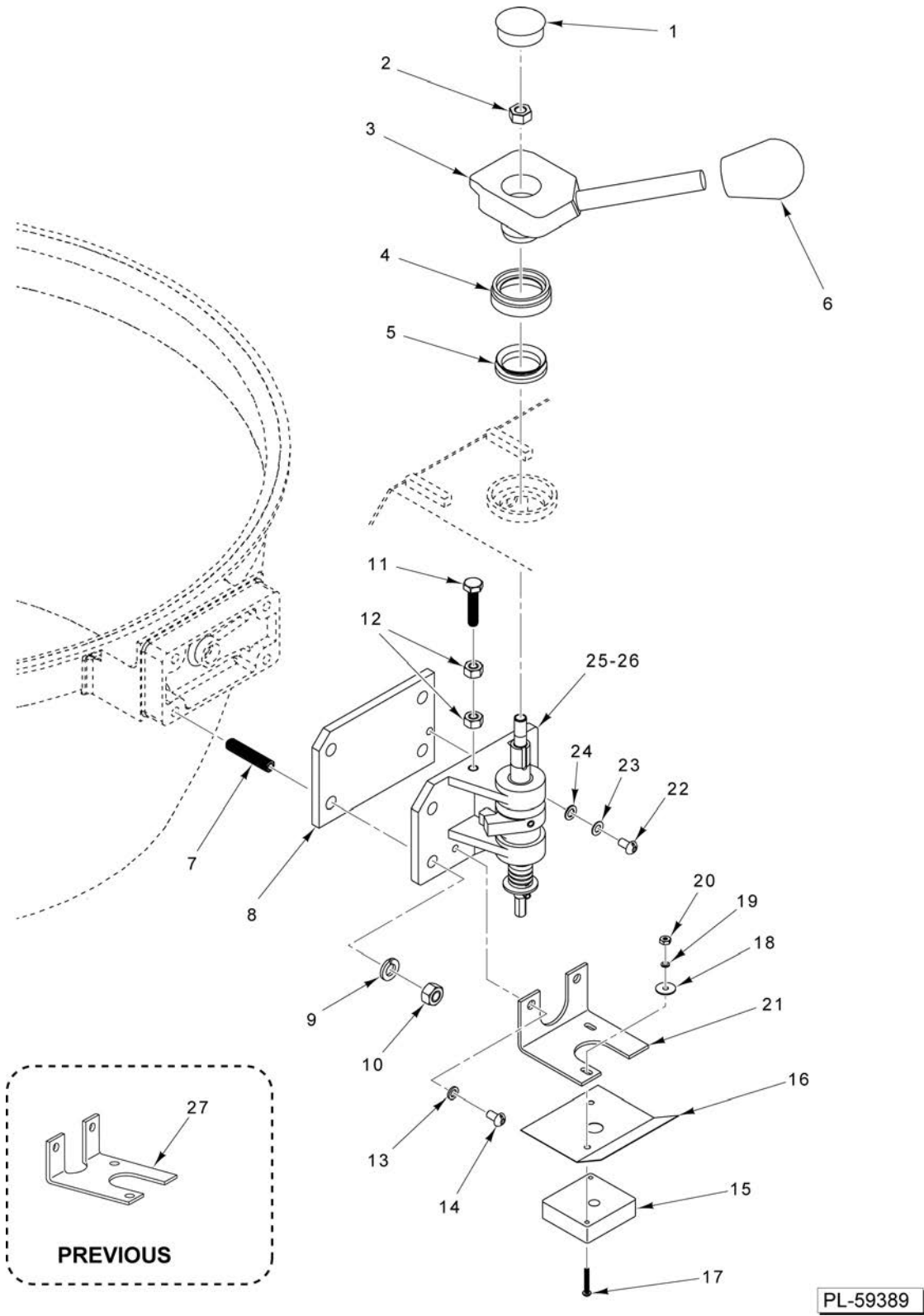
** High Voltage (360-480V) Configuration



BOWL LID ASSEMBLY

BOWL LID ASSEMBLY

ILLUS. PL-59879	PART NO.	NAME OF PART	AMT.
1	00-123666	Cap Assy. - Spring.....	1
2	00-290921	Bushing - Lid Spring.....	1
3	00-122267	Spring - Torsion.....	1
4	00-122265	Shaft - Spring Pivot.....	1
5	SC-055-01	Set Screw 10-24 x 1/4 Hex Hdls., Cup Pt. (SST).....	1
6	00-108394-00044	Sleeve Bearing (0.878 In. O.D.).....	1
7	00-122310	Sleeve.....	1
8	00-108394-00044	Sleeve Bearing (0.878 In. O.D.).....	1
9	00-110544-00008	Bushing (1.656 In. O.D.).....	1
10	00-438131-00100	Label - Warning (Rotating Knives).....	1
11	00-916957-00061	Plate - Warning (Trilingual).....	1
12	00-110544-00007	Bushing (0.718 In. O.D.).....	1
13	00-122587	Bushing - Cap.....	1
14	00-290624-00001	Handle Assy. - Lid (Incls. Items 9, 10, 12, 16, 17, 18, 19, & 20).....	1
15	00-290624-00003	Handle Assy. - Lid (ML-141144) (Incls. Items 9, 11, 12, 16, 17, 18, 19, & 20).....	1
16	00-437624	Label - Cleaning.....	1
17	00-121676-00001	Self-Tapping Screw #2 x 1/4 Truss Hd.....	2
18	00-937595	Plate - Lock.....	1
19	SC-119-58	Mach. Screw 1/4-20 x 1/2 Slotted Pan Hd. (SST).....	2
20	00-123172	Handle.....	1
21	00-439991	Shim.....	AR
22	00-122264	Bumper - Lid.....	1
23	00-292797	Lid Kit (Incls. Items 13 & 21).....	1
24	01-403675-00274	Brush - Cleaning.....	1

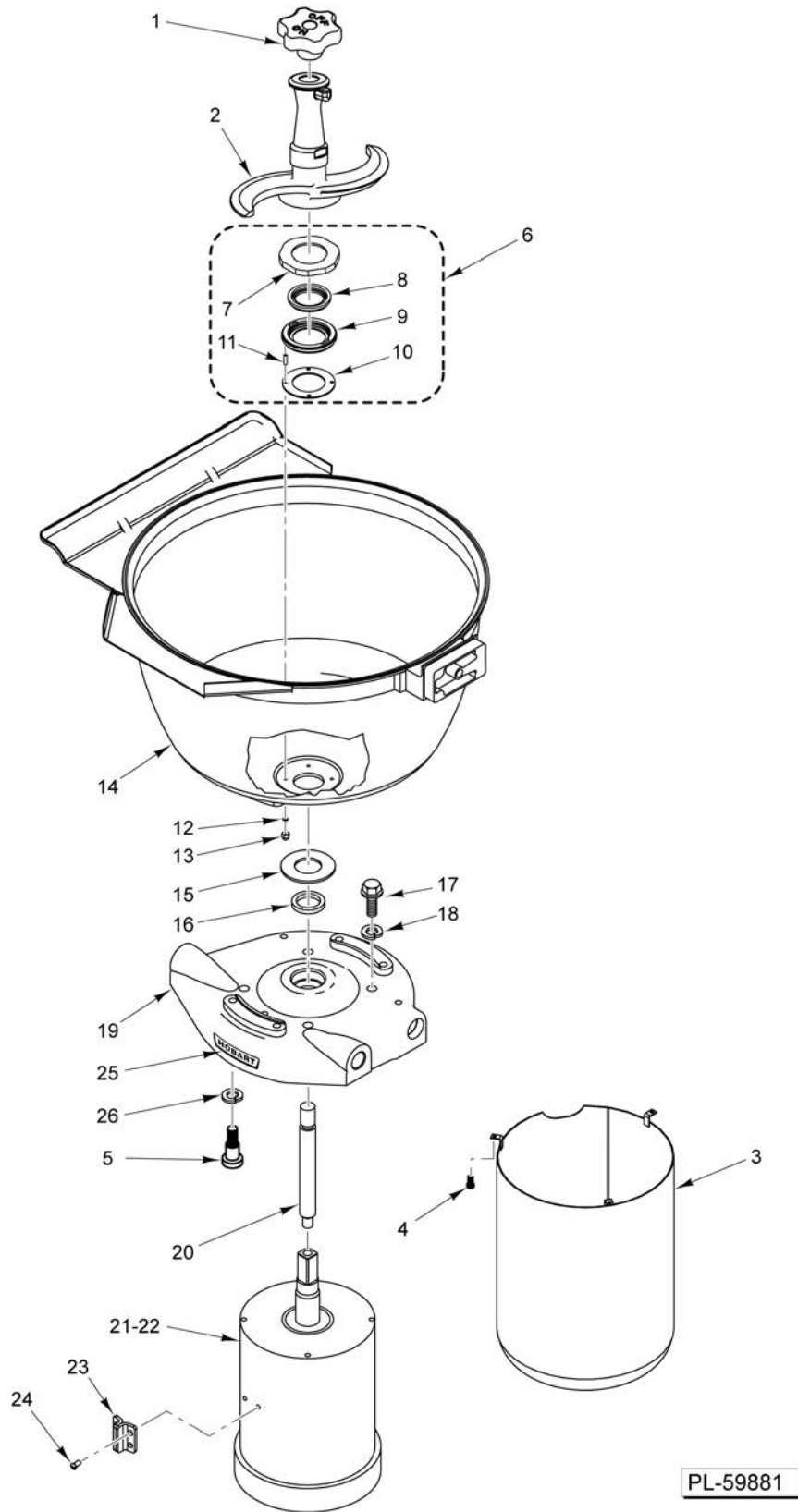


HANDLE LOCK

HANDLE LOCK

ILLUS.	PART NO.	NAME OF PART	AMT.
PL-59389			
1	00-290118	Plug - Hole.....	1
2	NS-036-19	Stop Nut 5/16-18 Hex (SST).....	1
3	00-290595	Lock Handle Assy.....	1
4	00-123221	Insert - Cover.....	1
5	00-123074-00005	Seal - V-Ring.....	1
6	00-123173	Knob.....	1
7	00-944036	Stud - Box Mount.....	4
8	00-944030	Spacer - Lid Interlock.....	1
9	WL-003-47	Lockwasher 5/16 Helical.....	4
10	NS-013-14	Nut 5/16-18 Hex.....	4
11	SC-097-20	Cap Screw 1/4-20 x 1-1/8 Hex Hd.....	1
12	NS-013-02	Nut 1/4-20 Hex.....	2
13	WL-004-40	Lockwasher 10 Helical.....	2
14	SC-008-09	Mach. Screw 10-24 x 3/8 Slotted Rd. Hd.....	2
15	00-087711-154-1	Switch - Interlock.....	1
16	00-290059	Insulator.....	1
17	SC-081-05	Mach. Screw 4-40 x 3/4 Slotted Rd. Hd.....	2
18	WS-023-40	Washer.....	2
19	WL-003-03	Lockwasher #4 Helical.....	2
20	NS-009-45	Nut 4-40 Hex.....	2
21	00-937592	Bracket - Switch.....	1
22	SC-008-09	Mach. Screw 10-24 x 3/8 Slotted Rd. Hd.....	1
23	WL-008-13	Lockwasher #10 Internal Shakeproof.....	1
24	WS-019-24	Washer.....	1
*25	00-937594	Interlock Shaft Assy. (Incls. Items 11 thru 24).....	1
26	00-291495	Shield (MBP).....	1
27	00-124968	Bracket - Switch.....	1

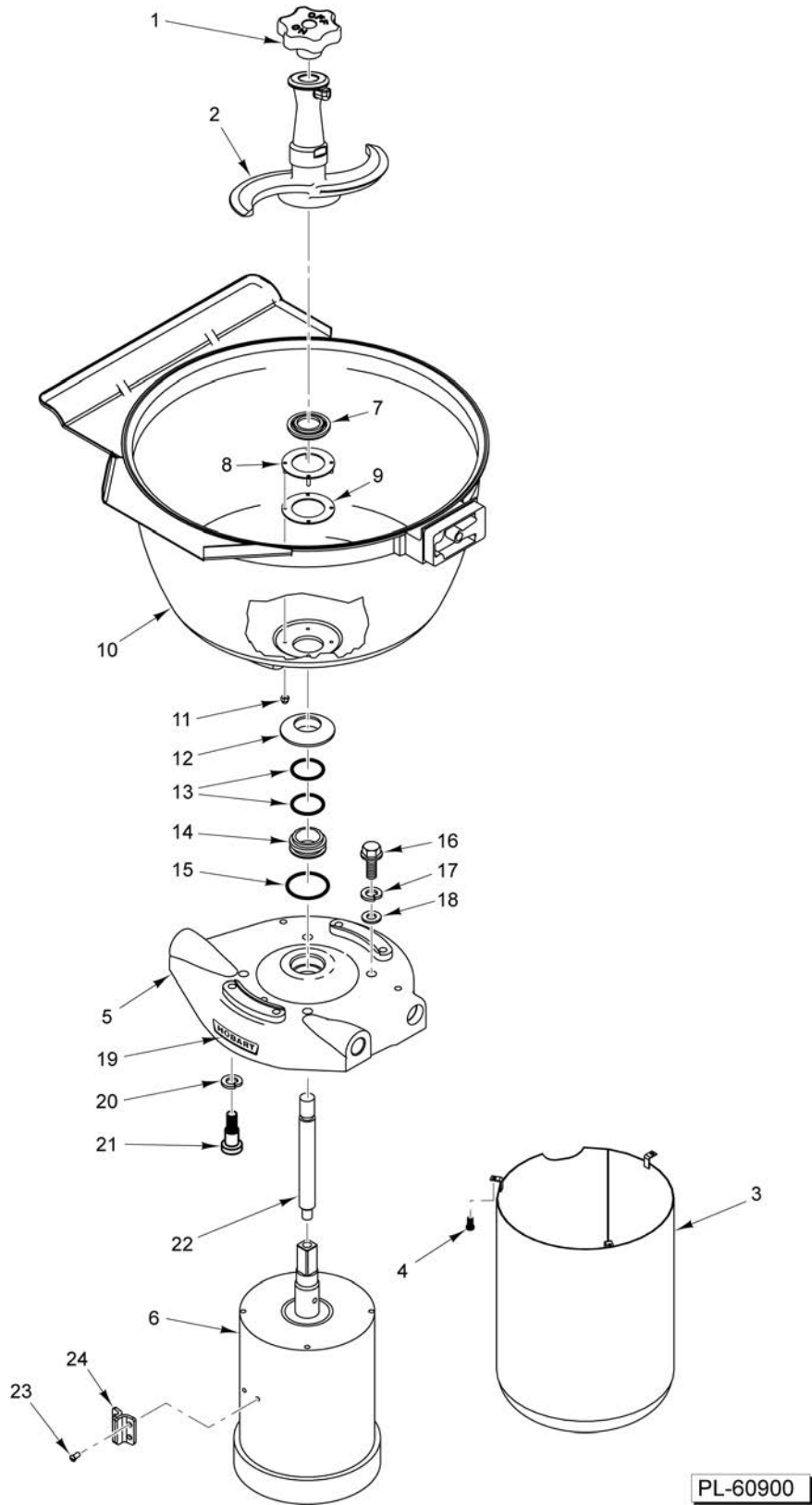
* (This Assembly is Spring Loaded. Do Not Disassemble.)



**BOWL AND MOTOR ASSEMBLY
(PREVIOUS CONSTRUCTION)**

**BOWL AND MOTOR ASSEMBLY
(PREVIOUS CONSTRUCTION)**

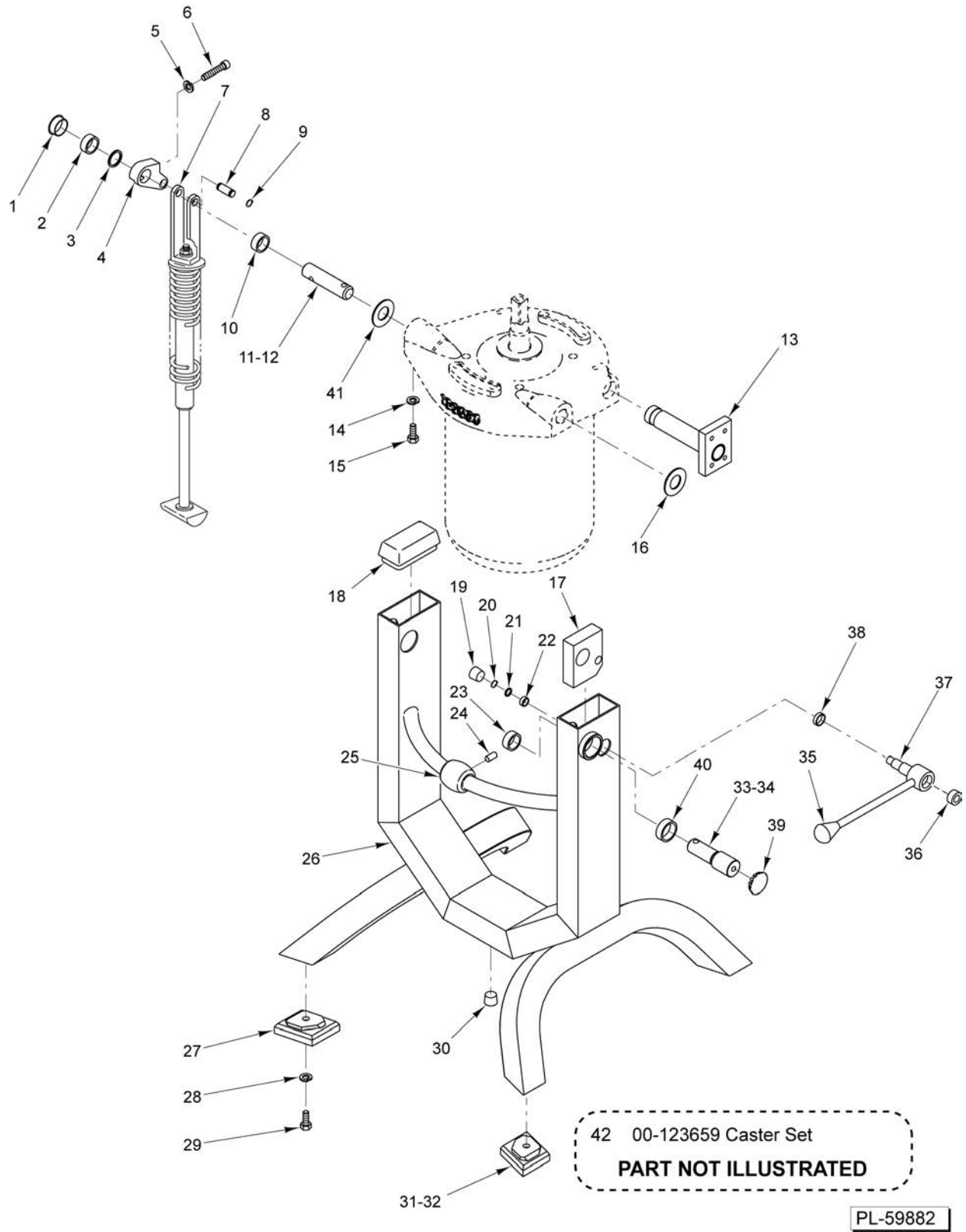
ILLUS. PL-59881	PART NO.	NAME OF PART	AMT.
1	00-291956	Knob - Retainer (Threaded).....	1
2	00-937408	Knead/Mix Blade & Sleeve Assy. (11.4 In. Dia.) (Packaged).....	1
3	00-122175-00003	Motor Cover Assy.....	1
4	SC-131-38	Mach. Screw 8-32 x 1/2 Slotted Pan Hd. (SST).....	3
5	SC-089-35	Cap Screw 3/8-16 x 1-1/4 Socket Fil. Hd.....	4
6	00-937556	Kit - Bowl Seal (Incls. Items 7 thru 13).....	1
7	00-937545	Cover - Seal.....	1
8	00-937546	Seal - Bowl (Bottom).....	1
9	00-937548	Retainer - Seal.....	1
10	00-937549	Gasket.....	1
11	00-937554	Stud - Threaded.....	4
12	WL-006-40	Lockwasher #6 Light.....	4
13	NS-046-33	Acorn Nut 6-32 Hex.....	4
14	00-122245	Bowl Assy.....	1
15	00-944081	Flinger - Motor.....	1
16	00-944032	Seal - Oil.....	1
17	SC-117-97	Cap Screw 1/2-13 x 1 Hex Hd.....	4
18	WL-004-11	Lockwasher 1/2 Helical.....	4
19	00-944020	Bracket - Motor Bearing.....	1
20	00-274680	Shaft - Extension (Threaded).....	1
21	00-937584	Kit - Motor Replacement (200 V.) (ML-141055 & ML-141058).....	1
22	00-937589	Kit - Motor Replacement (230 V.) (ML-136226).....	1
23	00-944078	Bumper - Motor.....	1
24	SC-119-58	Mach. Screw 1/4-20 x 1/2 Slotted Pan Hd. (SST).....	2
25	00-118366	Logo.....	2
26	WL-004-06	Lockwasher 3/8 Helical.....	4



**BOWL AND MOTOR ASSEMBLY
(CURRENT CONSTRUCTION)**

**BOWL AND MOTOR ASSEMBLY
(CURRENT CONSTRUCTION)**

ILLUS. PL-60900	PART NO.	NAME OF PART	AMT.
1	00-291956	Knob - Retainer (Threaded).....	1
2	00-937408	Knead/Mix Blade & Sleeve Assy. (11.4 In. Dia.) (Packaged).....	1
3	00-122175-00003	Motor Cover Assy.....	1
4	SC-131-38	Mach. Screw 8-32 x 1/2 Slotted Pan Hd. (SST).....	3
5	00-122370	Bearing Bracket & Logo Assy.....	1
6	00-937585	Motor (ML-141055, ML-141058, ML141144, & ML-141145).....	1
7	00-937941	Seal & Retainer Assy.....	1
8	00-937610	Plate Assy. - Bowl Sealing.....	1
9	00-937607	Gasket - Bowl Sealing.....	AR
10	00-122245-00002	Bowl Assy.....	1
11	NS-047-69	Lock Nut 6-32 Hex.....	4
12	00-937605	Seal - Shaft.....	1
13	OR-001-29	O-Ring.....	2
14	00-937606	Seal - Housing.....	1
15	OR-001-30	O-Ring.....	1
16	SC-041-44	Cap Screw 1/2-13 x 1-1/4 Hex Hd. (SST).....	4
17	WL-006-36	Lockwasher 1/2 Helical.....	4
18	WS-031-88	Washer 1/2 Sealing.....	4
19	00-118366	Logo.....	2
20	WL-004-06	Lockwasher 3/8 Helical.....	4
21	SC-089-35	Cap Screw 3/8-16 x 1-1/4 Socket Fil. Hd.....	4
22	00-274680	Shaft - Extension (Threaded).....	1
23	SC-119-58	Mach. Screw 1/4-20 x 1/2 Slotted Pan Hd. (SST).....	2
24	00-944078	Bumper - Motor.....	1



FRAME ASSEMBLY

FRAME ASSEMBLY

ILLUS.	PART NO.	NAME OF PART	AMT.
PL-59882			
1	PB-004-04	Plug Button (1-1/4).....	1
2	00-108394-00041	Sleeve Bearing (1.25 In. O.D.).....	1
3	WS-024-01	Washer.....	1
4	00-122187	Crank & Bearing Assy.....	1
5	WL-004-06	Lockwasher 3/8 Helical.....	1
6	SC-110-08	Cap Screw 3/8-16 x 1-3/4 Hex Socket Hd.....	1
7	00-122178	Counter Balance Assy.....	1
8	00-122189	Shaft - Yoke.....	1
9	RR-004-25	Retaining Ring.....	2
10	00-108394-00041	Sleeve Bearing (1.25 In. O.D.).....	1
*11	00-937451	Shaft - Pivot (LH).....	1
12	00-937454	Kit - Shaft Pivot (Incls. Items 11, 14, 15, & 33).....	1
13	00-122199	Tube & Plate Assy.....	1
*14	WL-004-11	Lockwasher 1/2 Helical.....	2
*15	SC-131-59	Screw.....	2
16	00-124740-00002	Spacer - Frame.....	1
17	00-122207	Bowl Clamp Assy.....	1
18	00-122167	Cap - Tube.....	2
19	PB-004-02	Plug Button (15/16).....	1
20	RR-004-05	Retaining Ring.....	1
21	WS-029-19	Washer.....	1
22	00-108394-00037	Sleeve Bearing (0.628 In. O.D.).....	1
23	00-108394-00041	Sleeve Bearing (1.25 In. O.D.).....	1
24	RP-006-01	Roll Pin 3/8 Dia. x 3/4 Lg.....	1
25	00-122161	Bumper - Stop.....	1
26	00-875732	Frame.....	1
27	00-122165	Foot (#2).....	2
28	WS-021-09	Washer.....	4
29	SC-117-97	Cap Screw 1/2-13 x 1 Hex Hd.....	4
30	00-123772	Plug - Vent.....	1
31	00-124361	Feet Set (Incls. Items 27, 28, 29, & 32).....	1
32	00-122164	Foot (#1).....	2
*33	00-937450	Shaft - Pivot (RH).....	1
34	00-937454	Kit - Shaft Pivot (Incls. Items 11, 14, 15, & 33).....	1
35	00-123173	Knob.....	1
36	00-123812	Magnet - Ring.....	1
37	00-122198	Tilt Lock Handle Assy. (Incls. Items 35 & 36).....	1
38	00-108394-00045	Sleeve Bearing (0.878 In. O.D.).....	1
39	PB-004-05	Plug Button (1-1/2).....	1
40	00-108394-00043	Sleeve Bearing (1.502 In. O.D.).....	1
41	00-124740-00002	Spacer - Frame.....	1
42	00-123659	Caster Set.....	2

* (Order kit 00-937454 for machines built before Serial #311448731.)



1



2



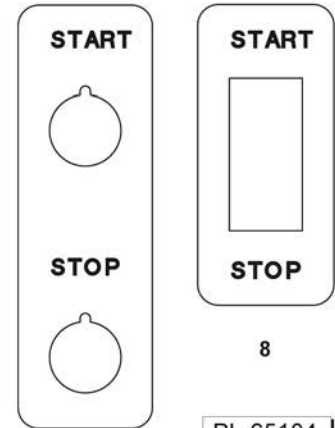
3



4



5



7

8



6

PL-65104

LABELS

LABELS

ILLUS.	PART NO.	NAME OF PART	AMT.
PL-65104			
1	00-118364	Logo (Hobart).....	AR
2	00-118365	Logo (Hobart).....	AR
3	00-118366	Logo (Hobart).....	AR
4	00-437624	Label - Cleaning.....	AR
5	00-438131-00100	Label - Warning (Rotating Knives).....	AR
6	00-916957-00061	Plate - Warning (Trilingual).....	AR
7	00-875475	Label - START / STOP.....	AR
8	00-937782	Label - START / STOP.....	AR

