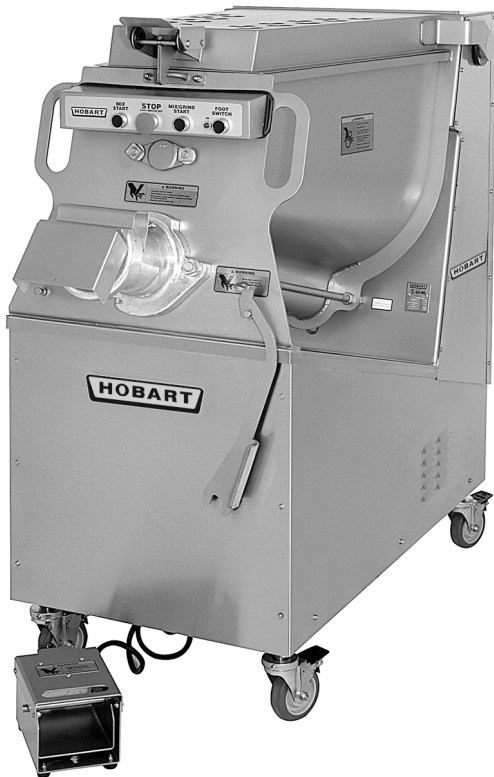




# CATALOG OF REPLACEMENT PARTS



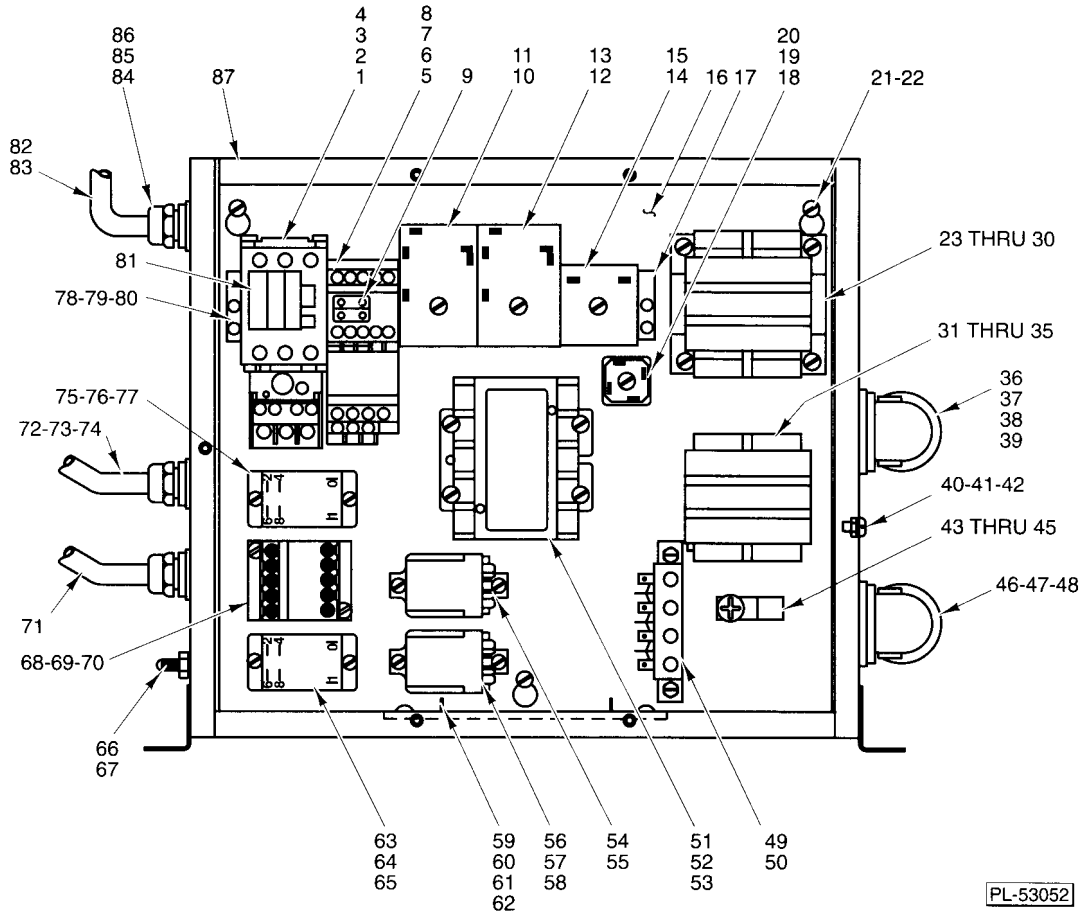
## B.) MG1532 & MG2032 MIXER GRINDERS (MLs 104800 thru 104806)

ML-104800	MG-1532
ML-104801	MG-1532
ML-104804	MG-1532
ML-104805	MG-2032
ML-104806	MG-2032



### **Table of Contents**

5	CONTROL BOX UNIT
9	OPERATOR CONTROL PANEL
11	TOP COVER UNIT
13	HINGE UNIT
15	CONVEYOR & MIXING ARM UNIT
17	FOOT SWITCH UNIT (PNEUMATIC)
19	MIX MOTOR UNIT
21	FRAME & HOPPER UNIT
23	GRIND MOTOR
25	TRANSMISSION UNIT
27	#32 GRINDER UNIT



**CONTROL BOX UNIT**

**CONTROL BOX UNIT**

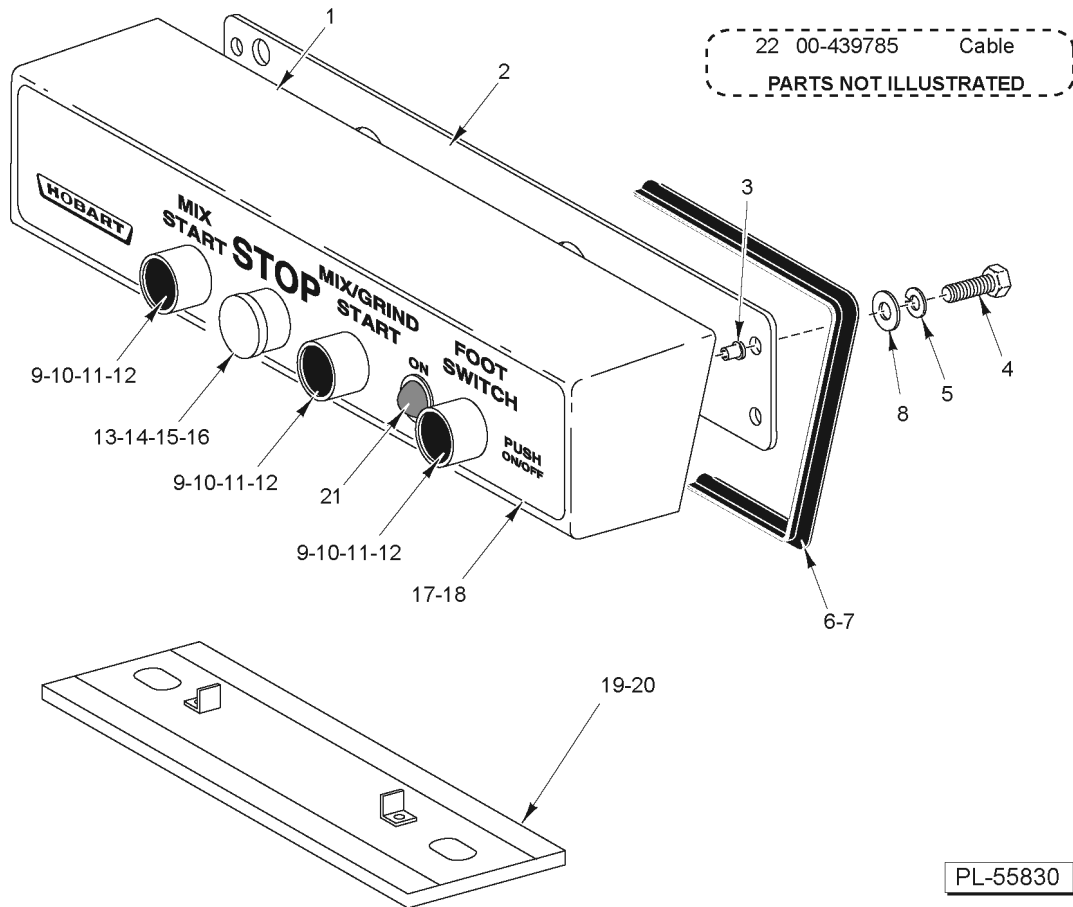
ILLUS. PL-53052	PART NO.	NAME OF PART	AMT.
1	00-087713-094-2	Contactora (50 Amp., 3 Pole) (208 V.) (1 CON).....	1
2	00-087713-094-3	Contactora (240/480 V.) (1 CON).....	1
3	00-088196-024-1	Relay - Overload (208/240 V.) (1 OL).....	1
4	00-088196-024-2	Relay - Overload (480 V.) (1 OL).....	1
5	00-087713-089-3	Contactora (208 V.) (2 CON).....	1
6	00-087713-089-2	Contactora (220-480 V.) (2 CON).....	1
7	00-088196-017-1	Relay - Overload (208/240 V.) (2 OL).....	1
8	00-088196-017-2	Relay - Overload (480 V.) (2 OL).....	1
9	00-087711-00266	Switch - Auxillary.....	1
10	00-087714-048-1	Relay - Time Delay (Brake TDR).....	1
11	00-478219	Bracket - Din Mounting.....	1
12	00-087714-048-2	Relay - Time Delay (Pause TDR).....	1
13	00-478219	Bracket - Din Mounting.....	1
14	00-087714-049-1	Timer - Solid State (On TDR).....	1
15	00-478219	Bracket - Din Mounting.....	1
16	00-479189-00001	Plate - Control Mounting (Weld).....	1
18	00-873821	Bridge Rectifier.....	1
17	00-478218	Rail - Stop.....	2
19	SC-021-25	Mach. Screw 10-24 x 3/4 Slotted Rd. Hd. (SST).....	1
20	WL-007-12	Lockwasher #10 External Shakeproof.....	1
21	SC-008-09	Mach. Screw 10-24 x 3/8 Slotted Rd. Hd.....	4
22	WL-007-12	Lockwasher #10 External Shakeproof.....	4
23	00-294500-039-1	Transformer 200 VA.....	1
24	FE-026-15	Fuse (3 Amp.) (208/240 V.).....	2
25	FE-025-50	Fuse (20 Amp.) (208/240 V.).....	1
26	FE-025-57	Fuse (1 Amp.) (380/415/480 V.).....	2
27	FE-025-59	Fuse (10 Amp.) (380/415/480 V.).....	1
28	SC-018-11	Mach. Screw 10-24 x 3/8 Slotted Pan Hd.....	4
29	WL-007-12	Lockwasher #10 External Shakeproof.....	4
30	NS-009-30	Nut 10-32 Hex.....	1
31	00-294500-032-1	Transformer 50 Amp. (480 V.).....	1
32	FE-025-20	Fuse (0.2 Amp.) (600 V.).....	2
33	FE-025-58	Fuse (0.3 Amp.) (600 V.).....	1
34	SD-009-09	Self-Tapping Screw 8-32 x 1/2 Slotted Bndg. Hd., Type F.....	4
35	00-294853-00019	Cable - Motor Control (MG1532).....	1
36	00-294853-00027	Cable - Motor Control (MG2032).....	1
37	FE-023-41	Strain Relief.....	1
38	FE-006-50	Lock Nut.....	1
39	FE-008-12	Gasket.....	1
40	SC-008-17	Mach. Screw 10-32 x 3/8 Slotted Rd. Hd.....	1
41	WL-007-12	Lockwasher #10 External Shakeproof.....	1
42	NS-009-30	Nut 10-32 Hex.....	1
43	00-118544-00002	Lug - Grounding.....	1
44	SC-114-29	Mach. Screw 1/4-20 x 3/8 Phil. Pan Hd.....	1
45	WL-007-14	Lockwasher 1/4 External.....	1
46	FE-023-42	Strain Relief (Below 250 V.) (Except Single Ph.).....	1
47	FE-006-50	Lock Nut.....	1
48	FE-008-12	Gasket.....	1
49	00-294325-00021	Block - Terminal (4 Pole).....	1
50	SD-038-03	Self-Tapping Screw #10-16 x 3/4 Slotted Truss Hd., Type B.....	2
51	00-087713-099-1	Contactora (3 CON).....	1
52	SC-018-11	Mach. Screw 10-24 x 3/8 Slotted Pan Hd.....	2
53	WL-007-12	Lockwasher #10 External Shakeproof.....	2
54	00-087714-020-3	Relay - 3 PDT (3 CR).....	1
55	SD-009-09	Self-Tapping Screw 8-32 x 1/2 Slotted Bndg. Hd., Type F.....	2

**CONTROL BOX UNIT**

ILLUS.	PART NO.	NAME OF PART	AMT.
PL-53052			
56	00-087714-050-1	Relay SPST - NO (208/240 V.) (Current Sense Relay).....	1
57	00-087714-050-2	Relay SPST - NO (480 V.) (Current Sense Relay).....	1
58	SD-009-09	Self-Tapping Screw 8-32 x 1/2 Slotted Bndg. Hd., Type F.....	2
59	00-478220-00001	Heater (208 V.).....	1
60	00-478220-00002	Heater (240/480 V.).....	1
61	SC-008-09	Mach. Screw 10-24 x 3/8 Rd. Hd.....	2
62	WL-007-12	Lockwasher #10 External Shakeproof.....	2
63	00-087714-046-2	Relay - 2 Pole (30 Amp.) (208 V.) (1 CR).....	1
64	00-087714-046-3	Relay - 2 Pole (30 Amp.) (240/480 V.) (1 CR).....	1
65	SD-009-09	Self-Tapping Screw 8-32 x 1/2 Slotted Bndg. Hd., Type F.....	2
66	00-087711-213-1	Switch - Air Actuated.....	1
67	00-294855-00001	Cap - Skid Retaining.....	1
68	00-087713-089-3	Contactor (208 V.) (2 CR).....	1
69	00-087713-089-2	Contactor (220-480 V.) (2 CR).....	1
70	SD-009-09	Self-Tapping Screw 8-32 x 1/2 Slotted Bndg. Hd., Type F.....	2
71	00-294853-00035	NLA - Obsolete--Cable Control Switch (ML-104805 & ML-104806).....	1
72	00-294853-00028	Cable Control Switch (ML-104805 & ML-104806).....	1
73	00-294853-00020	Cable Control Switch (ML-104800, ML-104801 & ML-104804).....	1
74	00-294853-00034	Cable Control Switch (ML-104800, ML-104801 & ML-104804).....	1
75	00-087714-042-2	Relay (2-Pole).....	1
76	00-087714-042-3	Relay (2 Pole) (220-240 V.) (Brake Ready Relay).....	1
77	SD-009-09	Self-Tapping Screw 8-32 x 1/2 Slotted Bndg. Hd., Type F.....	2
78	00-477300-00002	Rail - Din.....	1
79	SC-018-11	Mach. Screw 10-24 x 3/8 Slotted Pan Hd.....	2
80	WL-007-12	Lockwasher #10 External Shakeproof.....	2
81	00-087711-268-1	Switch - Auxiliary.....	3
82	00-294853-00030	Cable - Interlock (ML- 104805 & ML-104806) Cable - Interlock.....	1
83	00-294853-00022	Cable - Interlock (ML-104800, ML-104801 & ML-104804) Cable - Interlock Switch .....	1
84	FE-006-49	Strain Relief (T&B 2522).....	3
85	FE-006-05	Lock Nut 1/2 .....	3
86	FE-008-10	1/2 Gasket Assy.....	3
87	00-478742-00001	Box - Lower Control.....	1
	00-477954	Cover Assy. - Control Box.....	1
	SD-036-39	Self-Tapping Screw 10-24 x 3/8 Slotted. Truss Hd., Type TT (SST).....	6
*	00-479191-00001	Kit - Retrofit Assy. (208V.) (Incls. Item 5).....	1
*	00-479191-00002	Kit - Retrofit Assy. (240V.) (Incls. Item 6).....	1

\* Used on Model MG153 SN 27-1073-263 and Below

## NOTES

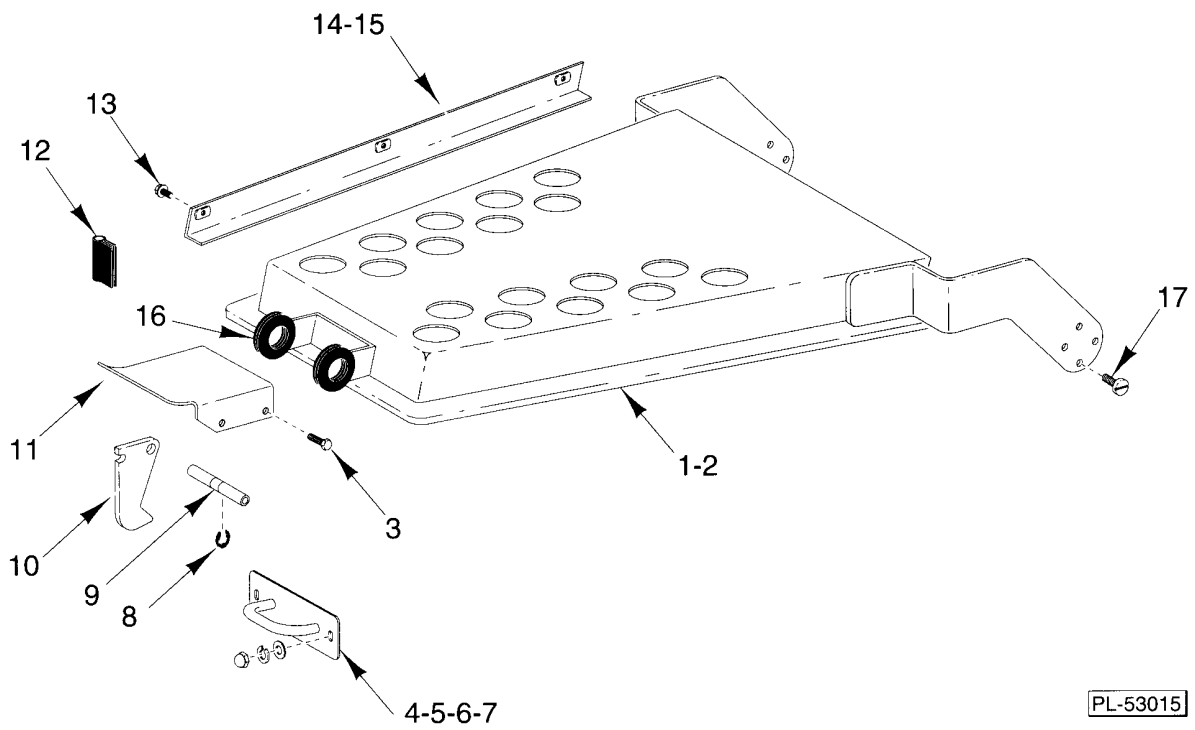


### OPERATOR CONTROL PANEL



**OPERATOR CONTROL PANEL**

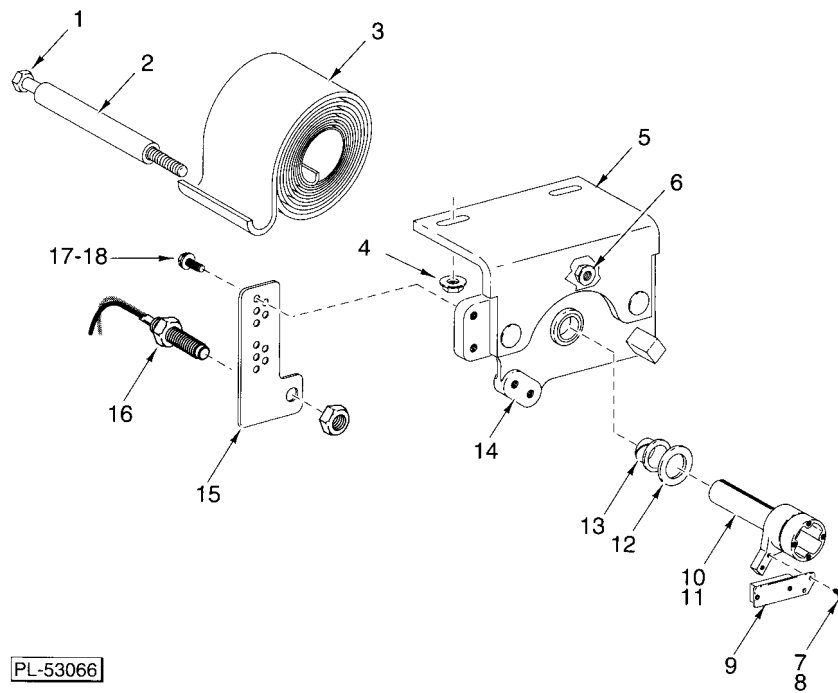
ILLUS.	PART NO.	NAME OF PART	AMT.
PL-55830			
1	00-479734	Box - Operator Control (Incls. Items 2, 4, 5, & 8).....	1
2	00-479630	Gasket.....	1
3	00-042648	Insert - Threaded.....	AR
4	SC-067-08	Mach. Screw 10-24 x 7/8 Hex Hd. (SST).....	4
5	WL-006-07	Lockwasher #10 Helical (SST).....	4
6	00-102825-00006	Gasket - Housing (23-3/4 In.) (Order with 00-102825-00007).....	1
7	00-102825-00007	Gasket - Housing (12-3/4 In.) (Order with 00-102825-00006).....	1
8	WS-019-10	Washer (SST).....	4
9	00-913102-00195	Kit - Switch Operator & Block (Incls. Items 10 & 11).....	1
10	00-478752-00003	Switch - Operator.....	3
11	00-087711-322-3	Block - Contact.....	3
12	00-873427	Cap - Protective.....	3
13	00-913102-00194	Kit - Switch Operator & Block (Stop) (Incls. Items 14 & 15).....	1
14	00-478752-00008	Switch Assy. (Stop).....	1
15	00-087711-322-5	Block - Contact.....	1
16	00-873427-00002	Cap - Protective (Stop).....	1
17	00-479001	Panel - Trim (Canada).....	1
18	00-477930	Panel - Trim.....	1
19	00-478220-00002	Heater (240/480 V.).....	1
20	00-478220-00001	Heater (208 V.).....	1
21	00-477653-00002	Light - Pilot.....	1
22	00-439785	Cable.....	1



### TOP COVER UNIT

**TOP COVER UNIT**

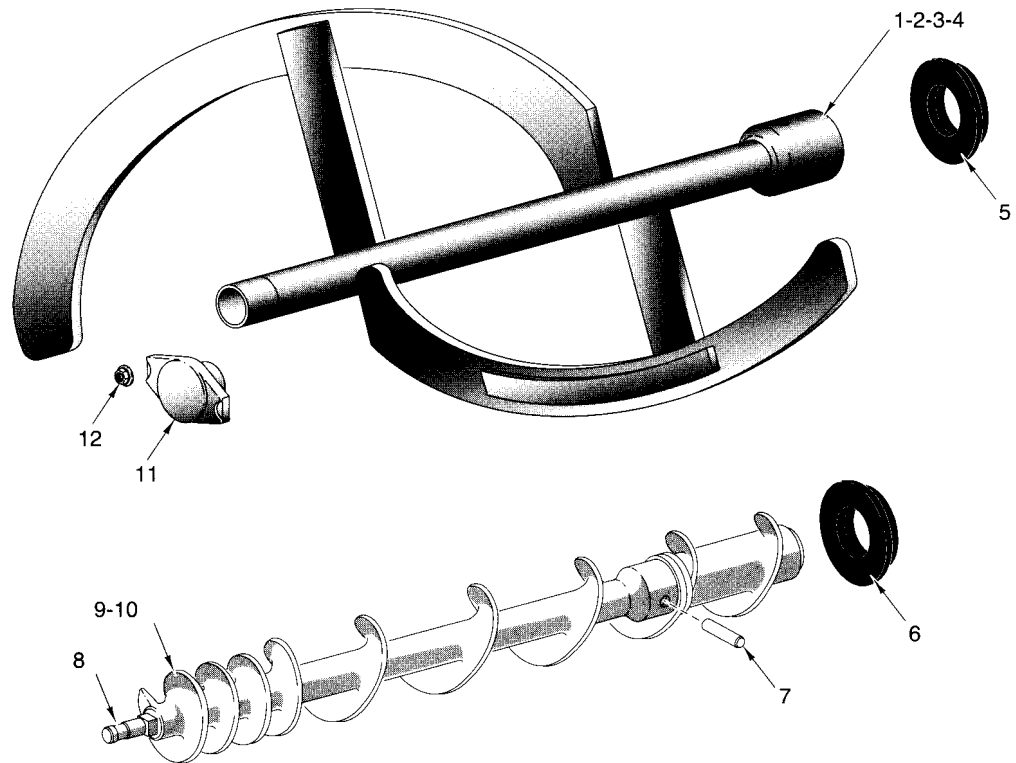
ILLUS.	PART NO.	NAME OF PART	AMT.
PL-53015			
1	00-946609-00001	Cover - Top Assy (MG1532).....	AR
2	00-946609-00002	Cover - Top Assy (MG2032).....	AR
3	SC-041-50	Cap Screw 1/4-20 x 1/2 Hex Hd. (SST).....	4
4	00-439822	Plate - Hasp.....	1
5	WS-017-06	Washer (SST).....	2
6	WL-006-17	Lockwasher 1/4 Helical (SST).....	2
7	NS-025-04	Crown Nut 1/4-20 (SST).....	2
8	RR-009-10	Retaining Ring 3/8 In. (SST).....	4
9	00-477928	Rod - Lid Latch.....	2
10	00-477927	Latch - Lid.....	1
11	00-477929	Handle - Lid Latch.....	1
12	00-102825-00005	Gasket - Housing (2 In.).....	2
13	SD-038-33	Self-Tapping Screw 10-24 x 1/2 Hex. Hex Washer Hd., Type TT.....	3
14	00-439816-00002	Wireway - Weldment (MG1532).....	1
15	00-439816-00003	Wireway - Weldment (MG2032).....	1
16	00-477956	Grommet.....	2
17	SC-053-17	Mach. Screw 5/16-18 x 3/4 Slotted Truss Hd. (SST).....	8



### HINGE UNIT

**HINGE UNIT**

ILLUS.	PART NO.	NAME OF PART	AMT.
PL-53066			
1	SC-041-36	Cap Screw 3/8-16 x 2-1/2 Hex Hd. (SST).....	2
2	00-439774	Spacer - Hinge Spring.....	2
3	00-439838	Spring - Spiral Torsion.....	2
4	NS-038-11	Lock Nut 5/16-18 Flange.....	11
5	00-478519	Bracket - Weldment.....	2
6	NS-038-11	Lock Nut 5/16-18 Flange.....	1
7	SC-113-96	Mach. Screw 8-32 x 1/2 Slotted Hex Washer Hd.....	2
8	WL-014-05	Lockwasher #8 External Shakeproof (SST).....	2
9	00-478523	Magnet Assy.....	2
10	00-478522-00002	Shaft - Hinge (LH).....	1
11	00-478522-00003	Shaft - Hinge (RH).....	1
12	WS-030-80	Washer.....	2
13	00-439845	Bearing - Sleeve.....	1
14	00-478518-00002	Block - Bearing.....	1
15	00-478520	Bracket - Switch.....	1
16	00-087711-307-1	Switch - Reed.....	1
17	SC-113-96	Mach. Screw 8-32 x 1/2 Slotted Hex Washer Hd.....	2
18	WL-014-05	Lockwasher #8 External Shakeproof (SST).....	2

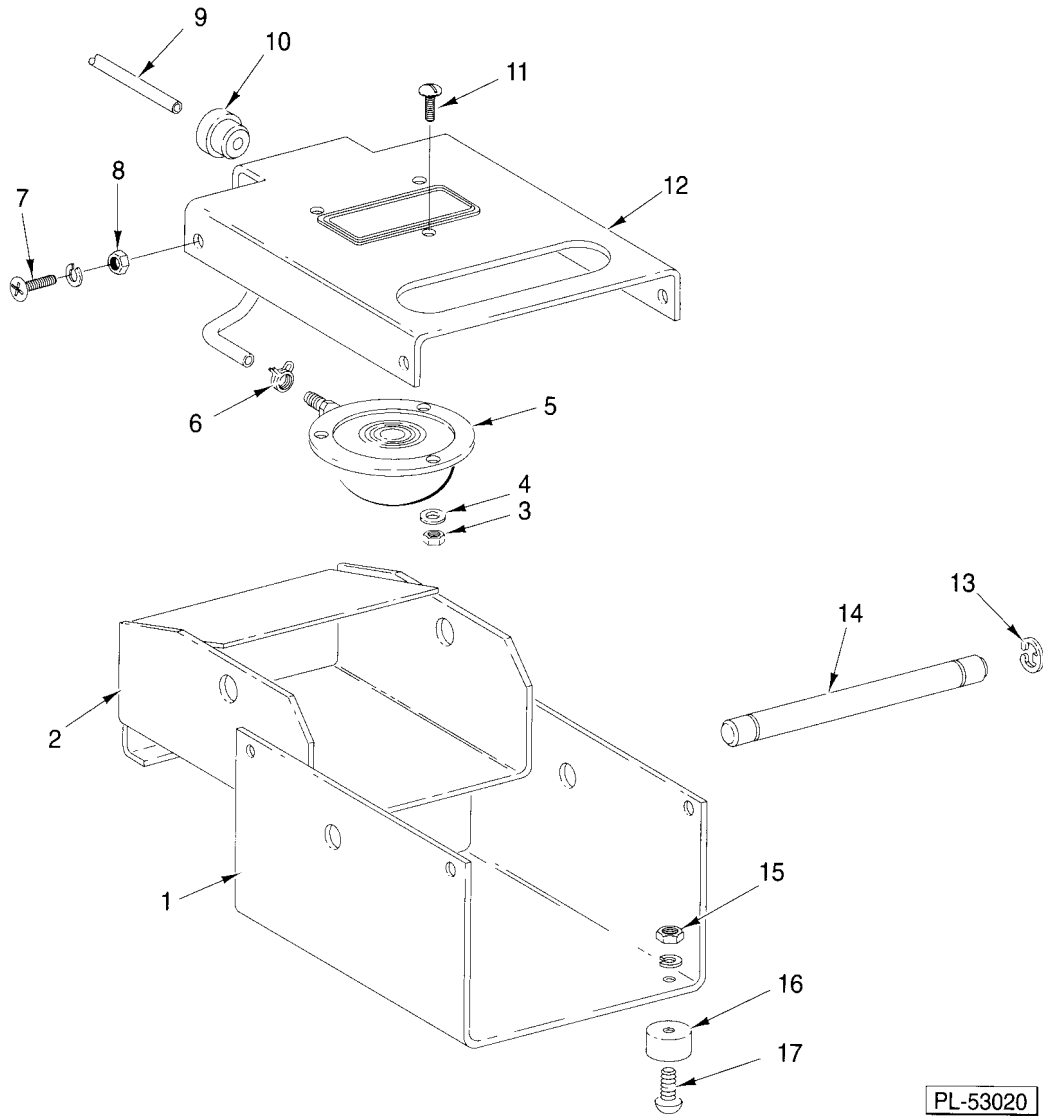


PL-53016

### CONVEYOR & MIXING ARM UNIT

**CONVEYOR & MIXING ARM UNIT**

ILLUS.	PART NO.	NAME OF PART	AMT.
PL-53016			
1	00-479518	Mix Arm Assy (ML-104805 & ML-104806).....	1
2	00-439814	Mix Arm Assy. (ML-104800, ML-104801 & ML-104804).....	1
3	00-186706	Plug.....	1
4	00-477960	Pin - Shear.....	1
5	00-479070	Seal (Mix Arm).....	2
6	00-479070	Seal (Mix Arm).....	1
7	00-477960	Pin - Shear.....	1
8	00-110576	Stud - Plate.....	1
9	00-477988	Conveyor Assy. (Cast) (MG2032).....	1
10	00-439809	Conveyor Assy. (Cast) (MG1532).....	1
11	00-439763	Retainer Assy.....	1
12	00-069862	Nut - Cylinder.....	1
	00-477938	Mix Arm Assy. (MG1532) (Incls. Items 3, 4, & 5).....	1
	00-478692	Mix Arm Assy. (MG2032) (Incls. Items 3, 4, & 5).....	1



PL-53020

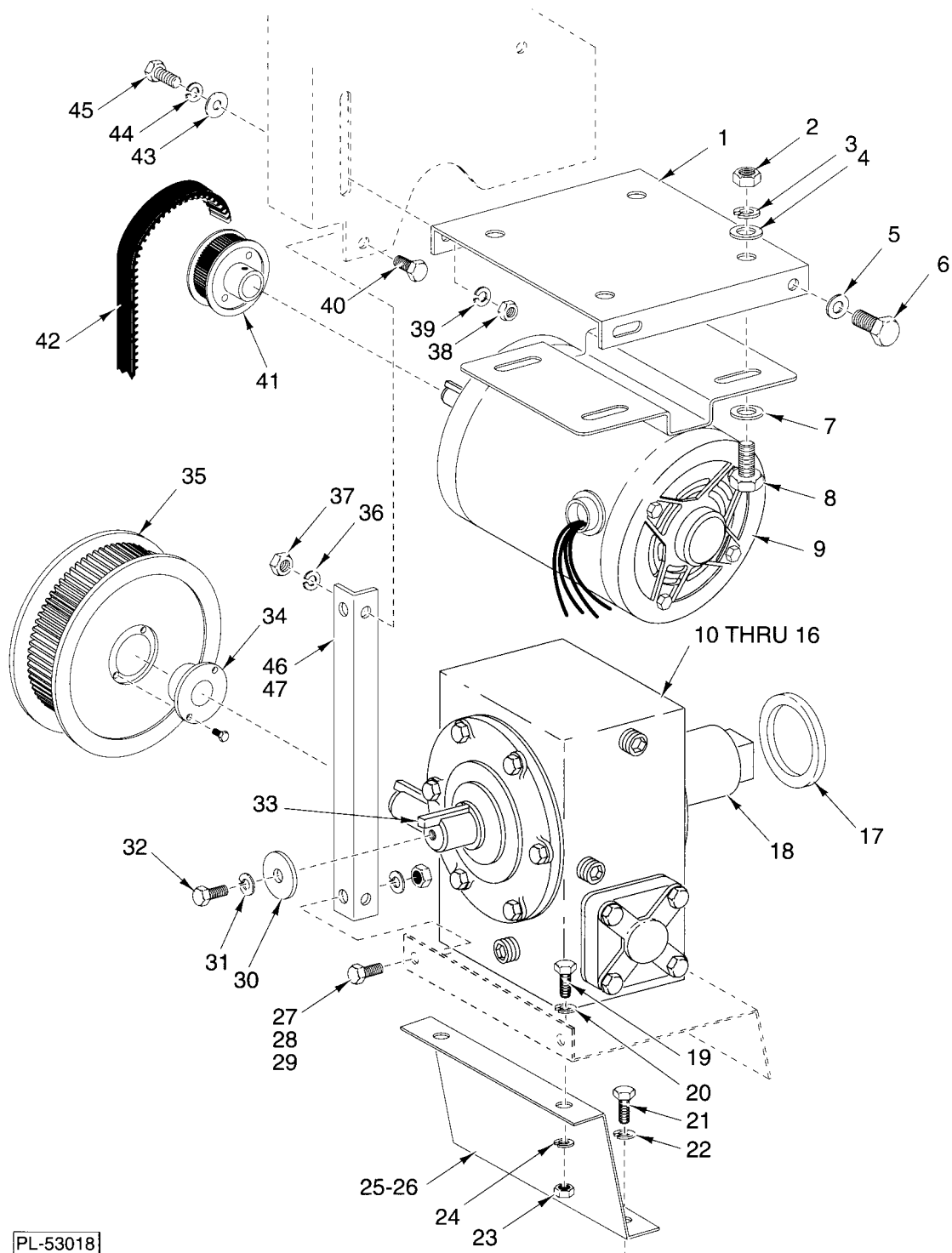
### FOOT SWITCH UNIT (PNEUMATIC)



**FOOT SWITCH UNIT (PNEUMATIC)**

ILLUS.	PART NO.	NAME OF PART	AMT.
PL-53020			
*1	292632	Base - Foot Switch.....	1
*2	292635	Switch - Rocker Assy.....	1
3	NS-031-08	Stop Nut 8-32 Special (SST).....	3
4	WS-019-10	Washer (SST).....	3
5	00-087711-214-1	Actuator - Air Switch.....	1
6	00-115747-00008	Clamp - Hose.....	2
7	SC-021-23	Mach. Screw 10-24 x 1/2 Slotted Rd. Hd. (SST).....	4
8	NS-031-15	Stop Nut 10-24 Hex (SST).....	4
9	00-946676	Tubing & Clamp Assy. (66 In.).....	1
10	FE-025-16	Strain Relief.....	1
11	SC-021-15	Mach. Screw 8-32 x 1/2 Slotted Rd. Hd. (SST).....	3
*12	439861-2	Cover-Foot Switch.....	1
13	RR-010-12	Retaining Ring.....	2
*14	292638	Shaft - Pivot.....	1
15	NS-031-15	Stop Nut 10-24 Hex (SST).....	4
16	00-019105-00002	Bumper.....	4
17	SC-021-24	Mach. Screw 10-24 x 5/8 Slotted Rd. Hd. (SST).....	4
	00-875785	Foot Switch Assy. (Incls. items 1 thru 17).....	1

\* Not Available Order 00-875785 Foot Switch Assembly

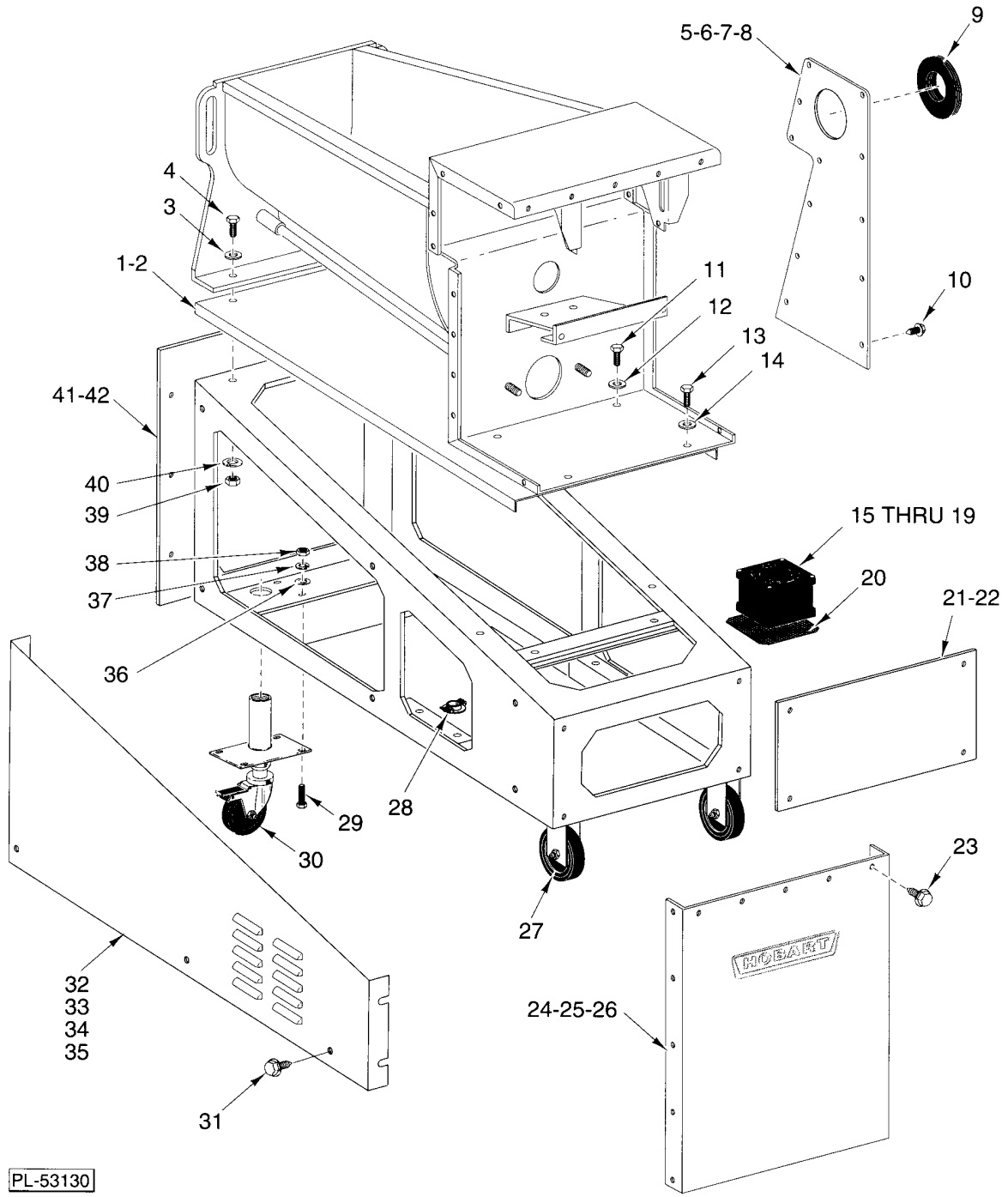


PL-53018

**MIX MOTOR UNIT**

**MIX MOTOR UNIT**

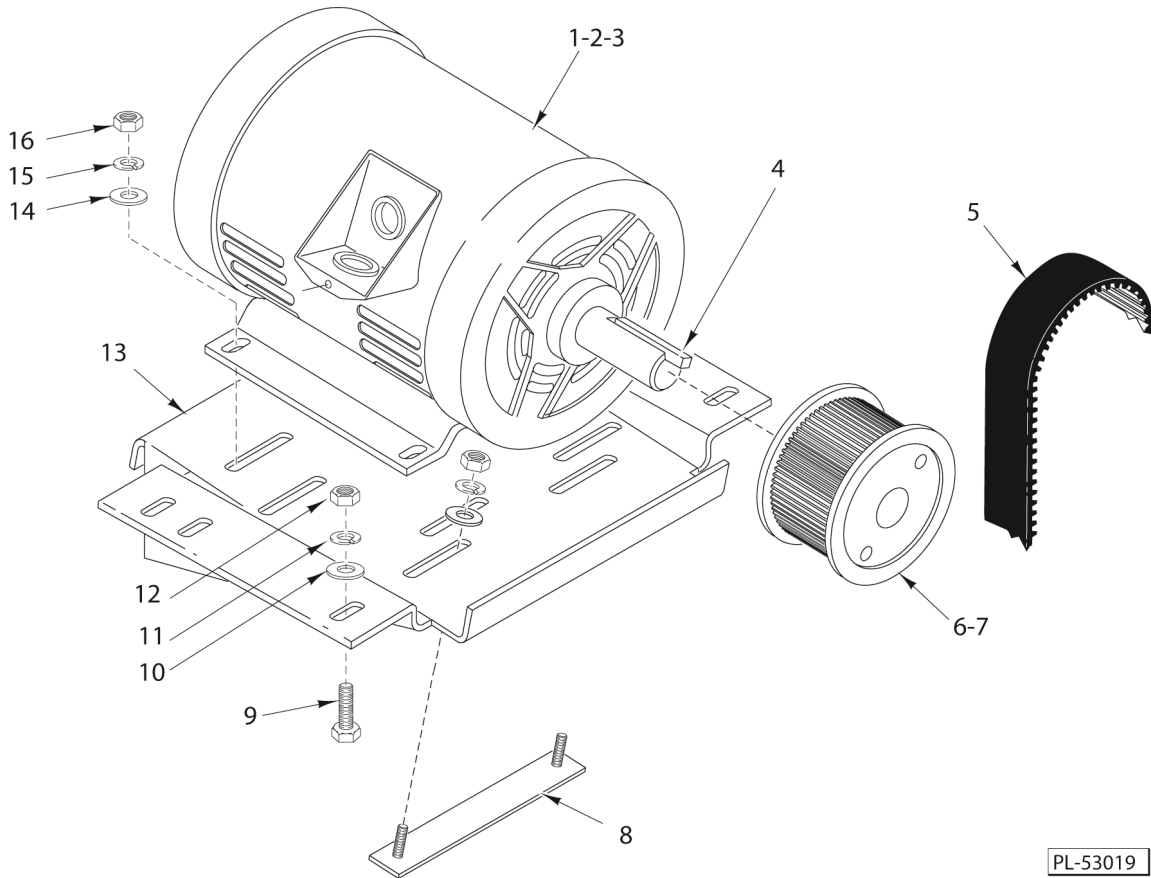
ILLUS.	PART NO.	NAME OF PART	AMT.
	<b>PL-53018</b>		
1	00-439781	NLA - Obsolete--Bracket - Nut (Mix Motor).....	1
2	NS-013-14	Nut 5/16-18 Hex.....	4
3	WL-006-23	Lockwasher 5/16 Helical (SST).....	4
4	WS-005-39	Washer (SST).....	4
5	WL-006-28	Lockwasher 3/8 Helical (SST).....	2
6	SC-062-43	Cap Screw 3/8-16 x 3/4 Hex Hd.....	2
7	WS-005-39	Washer (SST).....	4
8	SC-037-85	Cap Screw 5/16-18 x 1 Hex Hd.....	4
9	00-435805-00002	Motor Assy. (208-240/480 V., 60 Hz., 3 Ph., 1 Hp.).....	1
10	00-186696	Gear Reducer.....	1
11	SC-062-43	Cap Screw 3/8-16 x 3/4 Hex Hd.....	4
12	WL-006-28	Lockwasher 3/8 Helical (SST).....	4
13	00-186646-00001	Shim (0.120 Thk.).....	AR
14	00-186646-00002	Shim (0.060 Thk.).....	AR
15	00-186646-00003	Shim (0.030 Thk.).....	AR
16	00-186646-00004	Shim (0.018 Thk.).....	AR
17	WS-014-37	Washer.....	AR
18	00-439743	Shaft - Mix Arm (Sq. Drive).....	1
19	SC-041-10	Cap Screw 5/16-18 x 5/8 Hex Hd. (SST).....	4
20	WL-006-23	Lockwasher 5/16 Helical (SST).....	2
21	SC-062-43	Cap Screw 3/8-16 x 3/4 Hex Hd.....	2
22	WL-006-28	Lockwasher 3/8 Helical (SST).....	2
23	NS-013-14	Nut 5/16-18 Hex.....	4
24	WL-006-23	Lockwasher 5/16 Helical (SST).....	2
25	00-479236	Brace - Mix/Grind (MG1532).....	1
26	00-479237	Brace - Mix/Grind (MG2032).....	1
27	SC-041-10	Cap Screw 5/16-18 x 5/8 Hex Hd. (SST).....	4
28	WL-006-23	Lockwasher 5/16 Helical (SST).....	4
29	NS-013-14	Nut 5/16-18 Hex.....	4
30	00-186703	Washer.....	1
31	WL-006-28	Lockwasher 3/8 Helical (SST).....	1
32	SC-062-22	Cap Screw 3/8-16 x 1-1/4 Hex Hd.....	1
33	00-012430-00196	Key 1/4 x 1/4 x 4-3/4.....	1
34	00-186623-00001	Pulley - Driven (40T).....	1
35	00-186623-00001	Pulley - Driven (40T).....	1
36	WL-006-23	Lockwasher 5/16 Helical (SST).....	4
37	NS-013-14	Nut 5/16-18 Hex.....	2
38	NS-013-14	Nut 5/16-18 Hex.....	2
39	WL-006-23	Lockwasher 5/16 Helical (SST).....	2
40	SC-041-10	Cap Screw 5/16-18 x 5/8 Hex Hd. (SST).....	4
41	00-186622	Pulley - Driver (16T) (60 Hz.).....	1
42	00-478979	Belt - Flexa-Gear MG2032.....	1
	00-186714	Belt - Flexa-Gear MG1532.....	1
43	WS-018-04	Washer (SST).....	2
44	WL-006-23	Lockwasher 5/16 Helical (SST).....	2
45	SC-062-43	Cap Screw 3/8-16 x 3/4 Hex Hd.....	2
46	00-439757-00001	Brace - Mix Drive (MG2032).....	2
47	00-439757-00002	Brace - Mix Drive (MG1532).....	2



**FRAME & HOPPER UNIT**

**FRAME & HOPPER UNIT**

ILLUS.	PART NO.	NAME OF PART	AMT.
PL-53130			
1	00-478706	Tablecloth (MG2032).....	1
2	00-478705	Tablecloth (MG1532).....	1
3	WS-018-04	Washer (SST).....	3
4	SC-041-31	Cap Screw 3/8-16 x 1-1/4 Hex Hd. (SST).....	3
5	00-478728-00001	Panel - Upper Side (LH) (MG2032).....	1
6	00-478728-00002	Panel - Upper Side (RH) (MG2032).....	1
7	00-439826-00001	Panel - Upper Side (LH) (MG1532).....	1
8	00-439826-00001	Panel - Upper Side (LH) (MG1532).....	1
9	00-439835	Seal.....	2
10	SD-038-33	Self-Tapping Screw 10-24 x 1/2 Hex. Hex Washer Hd., Type TT.....	12
11	SC-041-31	Cap Screw 3/8-16 x 1-1/4 Hex Hd. (SST).....	2
12	WS-018-04	Washer (SST).....	2
13	SC-041-31	Cap Screw 3/8-16 x 1-1/4 Hex Hd. (SST).....	2
14	WS-018-04	Washer (SST).....	2
15	00-478738-00001	Fan - Cooling (230 V.).....	1
16	00-294853-026-1	Cable - Fan (240 V.).....	1
17	00-294853-026-2	Cable - Fan (480 V.).....	1
18	SC-119-30	Mach. Screw 6-32 x 3/4 Hex Hd. (SST).....	4
19	NS-031-50	Stop Nut 6-32 Hex (SST).....	4
20	00-478737	Panel - Perforated.....	1
21	00-439828-00003	Panel - Back (MG2032).....	1
22	00-439828-00002	Panel - Back (MG1532).....	1
23	SD-038-33	Self-Tapping Screw 10-24 x 1/2 Hex. Hex Washer Hd., Type TT.....	5
24	00-439824-00003	Panel - Upper Back (MG2032).....	1
25	00-439824-00002	Panel - Upper Back (MG1532).....	1
26	00-527014	Gasket - Rear Panel.....	1
27	00-439787	Caster - Fixed.....	2
28	FE-023-47	Strain Relief - Electrical (1 In.).....	1
29	SC-037-85	Cap Screw 5/16-18 x 1 Hex Hd.....	16
30	00-477924	Caster - Assembly 4 In. Swivel.....	2
31	SD-038-33	Self-Tapping Screw 10-24 x 1/2 Hex. Hex Washer Hd., Type TT.....	6
32	00-478718-00001	Panel - Lower Side (LH) (MG2032).....	1
33	00-478718-00002	Panel - Lower Side (RH) (MG2032).....	1
34	00-439829-00001	Panel - Lower Side (LH) (MG1532).....	1
35	00-439829-00002	Panel - Lower Side (RH) (MG1532).....	1
36	WS-005-32	Washer (SST).....	32
37	WL-003-47	Lockwasher 5/16 Helical.....	16
38	NS-013-14	Nut 5/16-18 Hex.....	16
39	NS-015-13	Nut 3/8-16 Hex (SST).....	5
40	WL-006-28	Lockwasher 3/8 Helical (SST).....	5
41	00-478719	Panel - Front (MG2032).....	1
42	00-439827	Panel - Front (MG1532).....	1



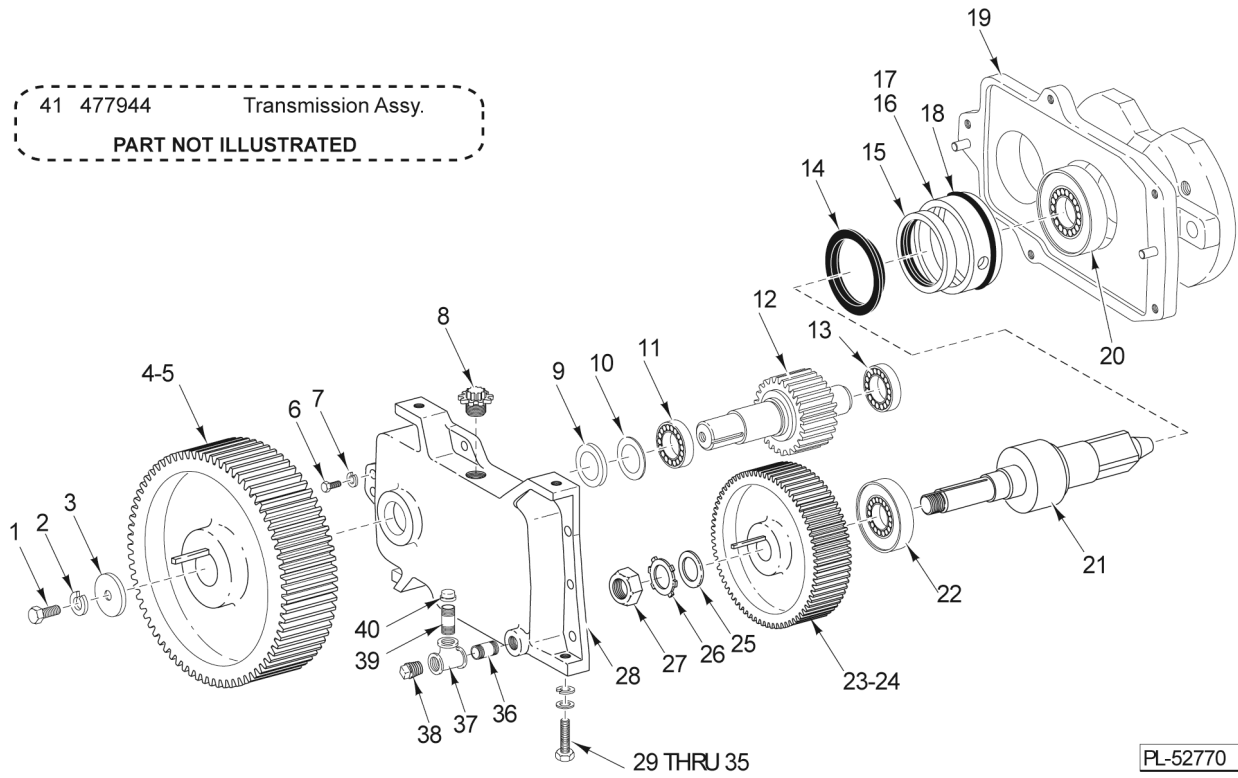
PL-53019

### GRIND MOTOR

**GRIND MOTOR**

ILLUS.	PART NO.	NAME OF PART	AMT.
PL-53019			
1	00-435697-00003	Motor - Grind (208 V., 60 Hz., 3 Ph., 7-1/2 Hp.).....	1
2	00-435697-00002	Motor - Grind (230/460V., 50/60 Hz., 3 Ph., 7.5 Hp.) (Must Also Order Item 3).....	1
3	00-065890-00018	Terminal.....	9
4	00-012430-00208	Key 5/16 X 5/16 2-3/8.....	1
5	00-186713	Belt - Flexa - Gear.....	1
6	00-477948-00001	Pulley - Timing-40 Teeth (8M).....	1
7	00-477948-00002	Pulley - Hub.....	1
8	00-479064	Stud & Plate.....	2
9	SC-118-09	Cap Screw 3/8-16 x 1-1/4 Hex Hd.....	4
10	WS-030-05	Washer (SST).....	4
11	WL-006-28	Lockwasher 3/8 Helical (SST).....	4
12	NS-047-39	Nut 3/8-16 Hex (Grade 5).....	4
13	00-478704	Bracket - Grind Motor.....	1
14	WS-030-05	Washer (SST).....	4
15	WL-006-28	Lockwasher 3/8 Helical (SST).....	4
16	NS-047-39	Nut 3/8-16 Hex (Grade 5).....	4

41 477944 Transmission Assy.  
PART NOT ILLUSTRATED

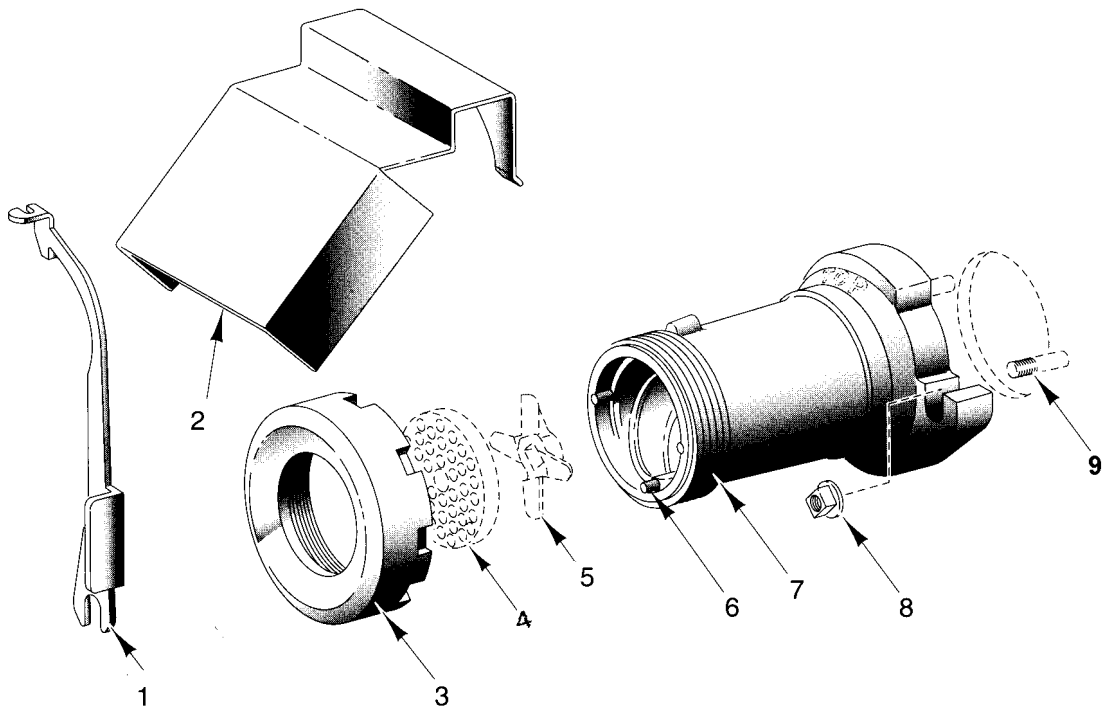


### TRANSMISSION UNIT



## TRANSMISSION UNIT

ILLUS.	PART NO.	NAME OF PART	AMT.
PL-52770			
1	SC-062-22	Cap Screw 3/8-16 x 1-1/4 Hex Hd.....	1
2	WL-6-28	Lockwasher 3/8 Medium.....	1
3	186703	Washer.....	1
4	12430-178	Key - 1/4 x 1/4 x 1 1/2.....	1
5	186723	Pulley - Driven (102T).....	1
6	SC-36-71	Cap Screw 3/8-16 x 1 1/4 Hex Hd.....	5
7	WL-6-28	Lockwasher 3/8 Medium.....	5
8	108963-2	Plug - Oil Fill.....	1
9	186657	Seal - Oil.....	1
10	SL-3-11	Spring - Loading ND 72.....	1
11	BB-7-21	Ball Bearing - N.D. 3207.....	1
12	477940	Shaft - Pinion (18T).....	1
13	BB-18-33	Ball Bearing - Fafnir #205KF.....	1
14	105196	Seal - Outer.....	1
15	108591	Seal - Square Drive Shaft.....	1
16	186655	Retainer - Seal.....	1
17	SC-47-35	Set Screw 5/16 -18 x 1/2 Hdls, Cup Pt.....	1
18	67500-52	"O" Ring.....	1
19	477946-2	Hub - Attachment.....	1
20	BR-2-28	Roller Bearing - Cone & Cup Assy.....	1
21	439742	Shaft - Grind Worm Drive.....	1
22	BR-2-20	Roller Bearing - Cone & Cup Assy.....	1
23	477939	Gear (57T).....	1
24	12430-215	Key.....	1
25	186658	Washer - Keyed.....	1
26	WL-17-7	Lockwasher - Bearing Lock Nut.....	1
27	NS-34-7	Nut - N-06.....	1
28	477945-2	Case - Gear.....	1
29	SC-62-22	Cap Screw 3/8-16 x 1 1/4 Hex Hd.....	2
30	WL-6-28	Lockwasher 3/8 Medium.....	2
31	WS-18-4	Washer.....	2
32	186646-1	Shim (.120 THK.).....	AR
33	186646-2	Shim (.060 THK.).....	AR
34	186646-3	Shim (.030 THK.).....	AR
35	186646-4	Shim (.018 THK.).....	AR
36	FP-35-46	Pipe 3/8 x 1 Lg. (T.B.E).....	1
37	FP-19-10	Tee 3/8 x 3/8 x 3/8.....	1
38	FP-28-9	Plug - Pipe 3/8 Square Hd.....	1
39	FP-35-52	Nipple 3/8 x 2 TBE.....	1
40	FP-77-75	NLA - Obsolete--Cap - Pipe 3/8.....	1
41	477944	Transmission Assy. (Incls. items 6 thru 28 & 36 thru 40).....	1



PL-52996

**#32 GRINDER UNIT**

**#32 GRINDER UNIT**

ILLUS.	PART NO.	NAME OF PART	AMT.
PL-52996			
1	00-873570	Wrench - Cylinder.....	1
2	00-292953	Meat Deflector.....	1
3	00-873697	Ring - Adjusting.....	1
*4		Plate - Grinder.....	1
**5		Knife - Grinder.....	1
6	00-105806	Pin - Plate.....	1
7	00-873720-00002	Cylinder #32 (Mach. SST).....	1
***8	NS-048-57	Nut 5/8-11 Flanged Hex.....	2
9	00-118266	Stud.....	2

- \* Sharp, High-Quality Knives and Plates Should Be Purchased Or Rented For This Grinder
- \*\* Sharp, High-Quality Knives and Plates Should Be Purchased Or Rented For This Grinde
- \*\*\* Also 873570 Wrench Cyclinder If not Previously Ordered for other Models

