



# CATALOG OF REPLACEMENT PARTS

## MG1532HD MIXER-GRINDER

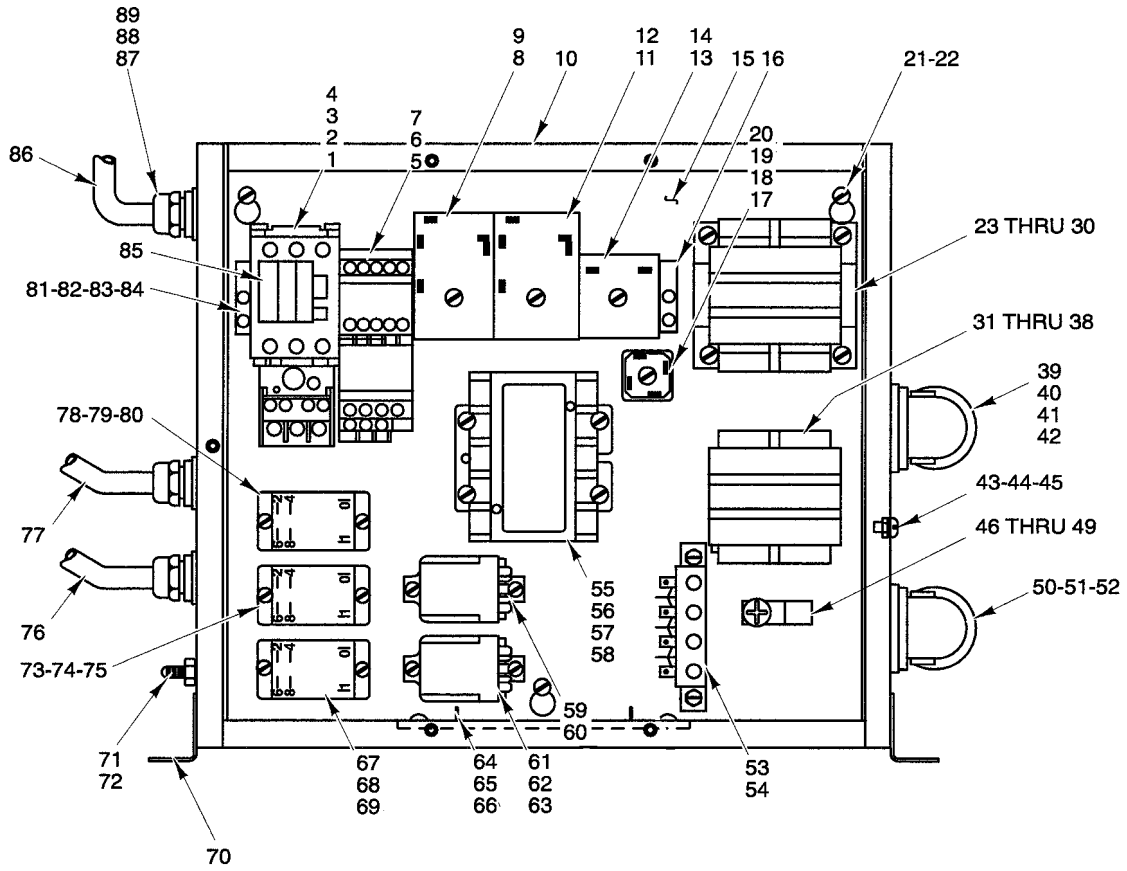
ML-104668





**Table of Contents**

|    |                            |
|----|----------------------------|
| 5  | CONTROL BOX UNIT           |
| 9  | OPERATOR CONTROL PANEL     |
| 11 | TOP COVER UNIT             |
| 13 | HINGE UNIT                 |
| 15 | CONVEYOR & MIXING ARM UNIT |
| 17 | FRAME & HOPPER UNIT        |
| 19 | MIX MOTOR UNIT             |
| 21 | GRIND MOTOR UNIT           |
| 23 | TRANSMISSION UNIT          |
| 25 | FOOT SWITCH UNIT           |
| 27 | #32 GRINDER UNIT           |



PL-52763

### CONTROL BOX UNIT

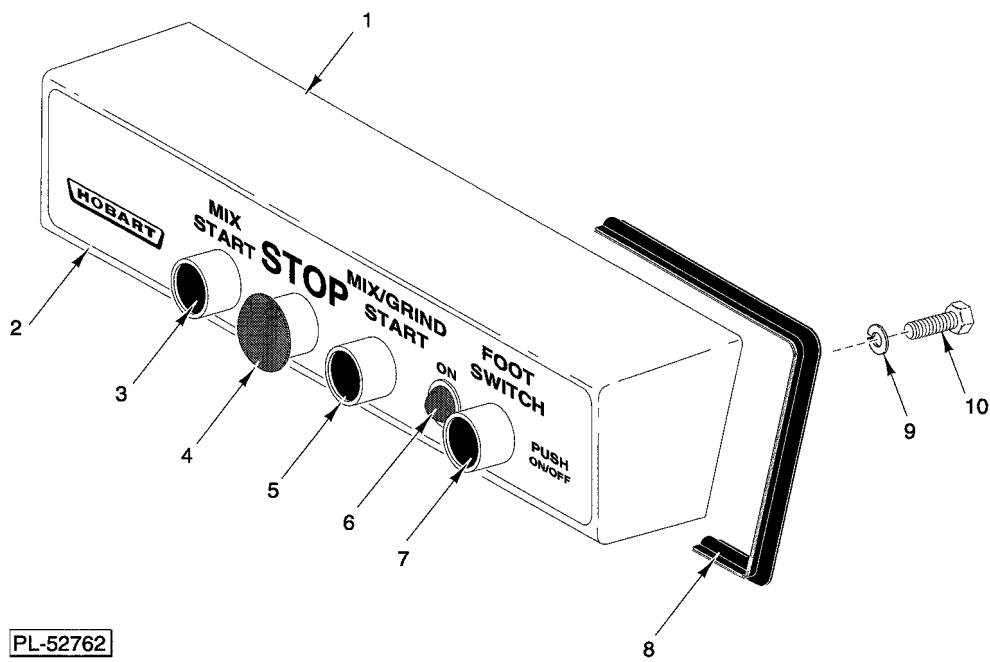
## CONTROL BOX UNIT

| ILLUS.<br>PL-52763 | PART NO.    | NAME OF PART  | AMT. |
|--------------------|-------------|---|------|
| 1                  | 87713-94-2  | Contactora (50 A., 3 Pole)(208 V.).....               | 1    |
| 2                  | 87713-94-3  | Contactora (240/480 V.).....                          | 1    |
| 3                  | 88196-24-1  | Relay - Overload (208/408 V.).....                    | 1    |
| 4                  | 88196-24-2  | Relay - Overload (480 V.).....                        | 1    |
| 5                  | 87713-89-2  | Contactora (220/230 V.).....                          | 1    |
| 6                  | 88196-17-1  | Relay - Overload (208/240 V.).....                    | 1    |
| 7                  | 88196-17-2  | Relay - Overload (480 V.).....                        | 1    |
| 8                  | 87714-48-1  | Relay - Time Delay, 3 Sec.....                        | 1    |
| 9                  | 478219      | Bracket - Din Mounting.....                           | 1    |
| 10                 | 477925-1    | Box - Lower Control.....                              | 1    |
| 11                 | 87714-48-2  | Relay - Time Delay.....                               | 1    |
| 12                 | 478219      | Bracket - Din Mounting.....                           | 1    |
| 13                 | 87714-49-1  | Timer - Solid State.....                              | 1    |
| 14                 | 478219      | Bracket - Din Mounting.....                           | 1    |
| 15                 | 477932      | NLA - Obsolete--Plate - Control Mounting.....         | 1    |
| 16                 | 478218      | Rail - Stop.....                                      | 2    |
| 17                 | 478223      | Bridge - Full Wave.....                               | 1    |
| 18                 | SC-60-87    | Mach. Screw 10-32 x 3/4 Rd. Hd.....                   | 1    |
| 19                 | WL-7-12     | Lockwasher 10 External Shakeproof.....                | 1    |
| 20                 | NS-9-30     | Mach. Nut 10-32 Hex.....                              | 1    |
| 21                 | SC-8-9      | Mach. Screw 10-24 x 3/8 Rd. Hd.....                   | 3    |
| 22                 | WL-7-12     | Lockwasher 10 External Shakeproof.....                | 3    |
| 23                 | 294500-31-1 | Transformer 200 A.....                                | 1    |
| 24                 | FE-25-49    | Fuse 600 V., 2 A.....                                 | 2    |
| 25                 | FE-25-50    | Fuse 600 V., 20 A.....                                | 1    |
| 26                 | 477566      | Cover - Transformer (IEC Type C).....                 | 2    |
| 27                 | 478217      | Fuse - Puller.....                                    | 3    |
| 28                 | SC-8-17     | Mach. Screw 10-32 x 3/8 Rd. Hd.....                   | 4    |
| 29                 | WL-7-12     | Lockwasher 10 External Shakeproof.....                | 4    |
| 30                 | NS-9-30     | Mach. Nut 10-32 Hex.....                              | 1    |
| 31                 | 294500-32-1 | Transformer 50 A. (480 V.).....                       | 1    |
| 32                 | FE-25-49    | Fuse 600 V., 2 A.....                                 | 1    |
| 33                 | FE-25-50    | Fuse 600 V., 20 A.....                                | 1    |
| 34                 | 477566      | Cover - Transformer (IEC Type C).....                 | 1    |
| 35                 | 478217      | Fuse - Puller.....                                    | 1    |
| 36                 | SC-8-17     | Mach. Screw 10-32 x 3/8 Rd. Hd.....                   | 1    |
| 37                 | WL-7-12     | Lockwasher 10 External Shakeproof.....                | 1    |
| 38                 | NS-9-30     | Mach. Nut 10-32 Hex.....                              | 1    |
| 39                 | 294853-19   | Cable - Motor Control.....                            | 1    |
| 40                 | FE-23-41    | Strain Relief.....                                    | 1    |
| 41                 | FE-6-50     | Lock-Nut.....   | 1    |
| 42                 | FE-8-12     | Gasket.....   | 2    |
| 43                 | SC-8-17     | Mach. Screw 10-32 x 3/8 Rd. Hd.....                   | 2    |
| 44                 | WL-7-12     | Lockwasher 10 External Shakeproof.....                | 1    |
| 45                 | NS-9-30     | Mach. Nut 10-32 Hex.....                              | 1    |
| 46                 | FE-23-87    | NLA - Obsolete--Lug - Grounding.....                  | 1    |
| 47                 | SC-114-29   | Mach. Screw 1/4-20 x 3/8 Phil. Pan Hd.....            | 1    |
| 48                 | WL-7-14     | NLA - Obsolete--Lockwasher 1/4 Medium.....            | 1    |
| 49                 | NS-46-53    | Mach. Nut 1/4-20 Hex.....                             | 1    |
| 50                 | FE-23-42    | Strain Relief.....                                    | 1    |
| 51                 | FE-6-50     | Lock-Nut.....   | 1    |
| 52                 | FE-8-12     | Gasket Assy.....                                      | 1    |
| 53                 | 294325-19   | Fuse - Puller.....                                    | 1    |
| 54                 | SD-32-1     | Self-Tapping Screw #1 0-24 x 3/8 Hex Hd., Type F..... | 2    |
| 55                 | 87713-99-1  | Contactora.....                                       | 1    |

**CONTROL BOX UNIT**

| ILLUS. | PART NO.    | NAME OF PART   | AMT. |
|--------|-------------|--|------|
| 56     | SC-8-17     | Mach. Screw 10-32 x 3/8 Rd. Hd.....                    | 4    |
| 57     | WL-7-12     | Lockwasher 10 External Shakeproof.....                 | 4    |
| 58     | NS-9-30     | Mach. Nut 10-32 Hex.....                               | 4    |
| 59     | 87714-20-3  | Relay - 3PDT.....                                      | 1    |
| 60     | SD-9-9      | Self-Tapping Screw 8-32 x 1/2 Binding Hd., Type F..... | 2    |
| 61     | 87714-50-1  | Relay SPST - NO (208/240 V.).....                      | 1    |
| 62     | 87714-50-2  | Relay SPST - NO (480 V.).....                          | 1    |
| 63     | SD-9-9      | Self-Tapping Screw 8-32 x 1/2 Binding Hd., Type F..... | 2    |
| 64     | 478220-1    | Heater.....  | 1    |
| 65     | SC-8-9      | Mach. Screw 10-24 x 3/8 Rd. Hd.....                    | 2    |
| 66     | WL-7-12     | Lockwasher 10 External Shakeproof.....                 | 2    |
| 67     | 87714-46-2  | Relay - 2 Pole (30 Amp.)(208 V.).....                  | 1    |
| 68     | 87714-46-3  | Relay - 2 Pole (30 Amp.)(208/480 V.).....              | 1    |
| 69     | SD-9-9      | Self-Tapping Screw 8-32 x 1/2 Binding Hd., Type F..... | 2    |
| 70     | 186708      | Bracket - Mounting.....                                | 2    |
| 71     | 87711-213-1 | Switch - Air Actuated.....                             | 1    |
| 72     | 294855-1    | Cap.....   | 1    |
| 73     | 87714-42-2  | Relay - 2 Pole (208 V.).....                           | 1    |
| 74     | 87714-42-3  | Relay (2 Pole)(240/480 V.).....                        | 1    |
| 75     | SD-9-9      | Self-Tapping Screw 8-32 x 1/2 Binding Hd., Type F..... | 2    |
| 76     | 294853-21   | Cable - Control Switch.....                            | 1    |
| 77     | 294853-20   | Cable - Motor Control.....                             | 1    |
| 78     | 87714-42-2  | Relay - 2 Pole (208 V.).....                           | 1    |
| 79     | 87714-42-3  | Relay (2 Pole)(240/480 V.).....                        | 1    |
| 80     | SD-9-9      | Self-Tapping Screw 8-32 x 1/2 Binding Hd., Type F..... | 2    |
| 81     | 477300-2    | Rail - Din.....  | 1    |
| 82     | SC-8-17     | Mach. Screw 10-32 x 3/8 Rd. Hd.....                    | 2    |
| 83     | WL-7-12     | Lockwasher 10 External Shakeproof.....                 | 2    |
| 84     | NS-9-30     | Mach. Nut 10-32 Hex.....                               | 2    |
| 85     | 87711-268-1 | Switch - Auxillary.....                                | 2    |
| 86     | 294853-22   | Cable - Interlock.....                                 | 1    |
| 87     | FE-6-49     | Strain Relief (T & B 2522).....                        | 3    |
| 88     | FE-6-5      | Lock Nut 1/2.....                                      | 3    |
| 89     | FE-8-10     | 1/2 Gasket Assy.....                                   | 3    |
|        | 477954      | Cover Assy. - Control Box.....                         | 1    |
|        | SD-36-39    | Self-Tapping Screw 10-24 x 3/8 Truss Hd, Type TT.....  | 6    |

## NOTES

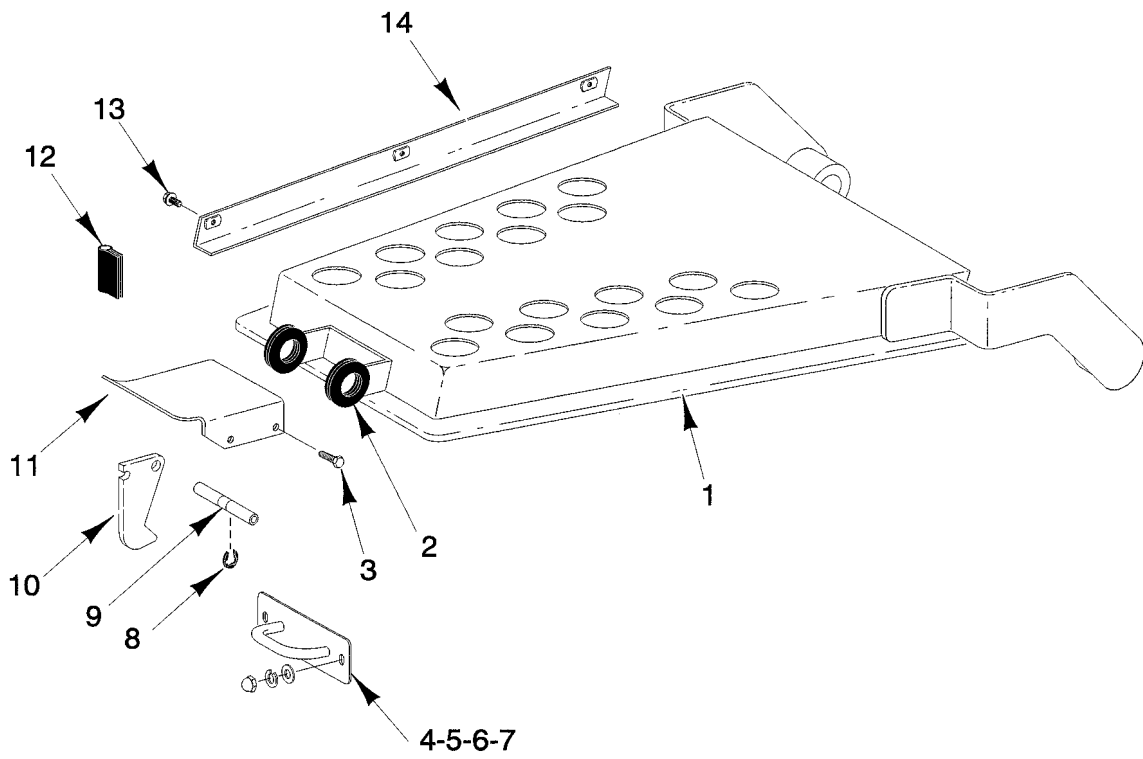


**OPERATOR CONTROL PANEL**



**OPERATOR CONTROL PANEL**

| ILLUS.   | PART NO.    | NAME OF PART                       | AMT. |
|----------|-------------|------------------------------------|------|
| PL-52762 |             |                                    |      |
| 1        | 439760      | Box - Operator Control.....        | 1    |
| 2        | 477930      | Panel - Trim.....                  | 1    |
| 3        | 87711-255-6 | Switch Assy. (Mix/Start).....      | 1    |
| 4        | 87711-255-7 | Switch - Stop.....                 | 1    |
| 5        | 87711-255-6 | Switch Assy. (Mix/Grind).....      | 1    |
| 6        | 477653-2    | Light - Pilot.....                 | 1    |
| 7        | 87711-255-6 | Switch Assy. (Foot).....           | 1    |
| 8        | 102825-6    | Gasket - Housing.....              | 1    |
| 9        | WL-6-17     | Lockwasher 1/4 Medium.....         | 4    |
| 10       | SC-41-1     | Cap Screw 1/4-20 x 3/4 Hex Hd..... | 4    |
|          | 439785      | Cable.....                         | 1    |

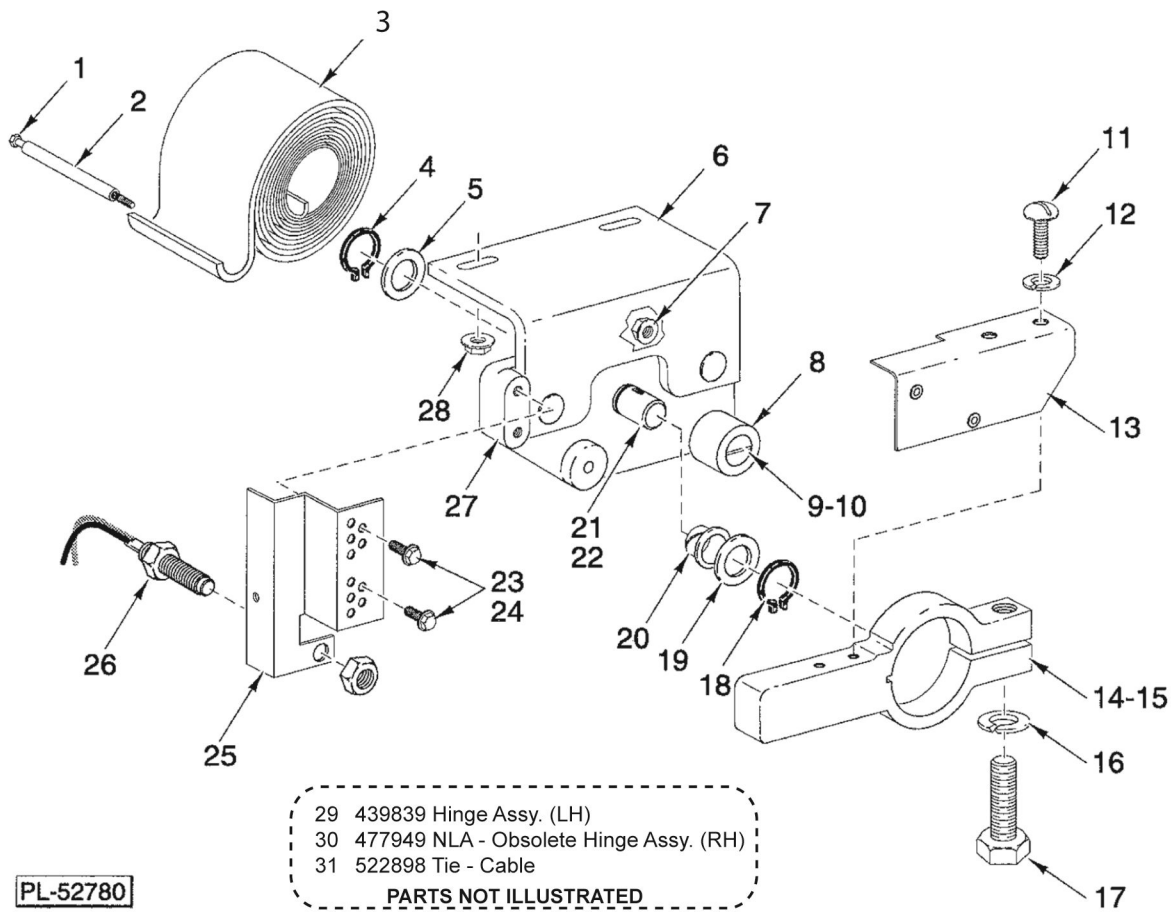


PL-52764

**TOP COVER UNIT**

**TOP COVER UNIT**

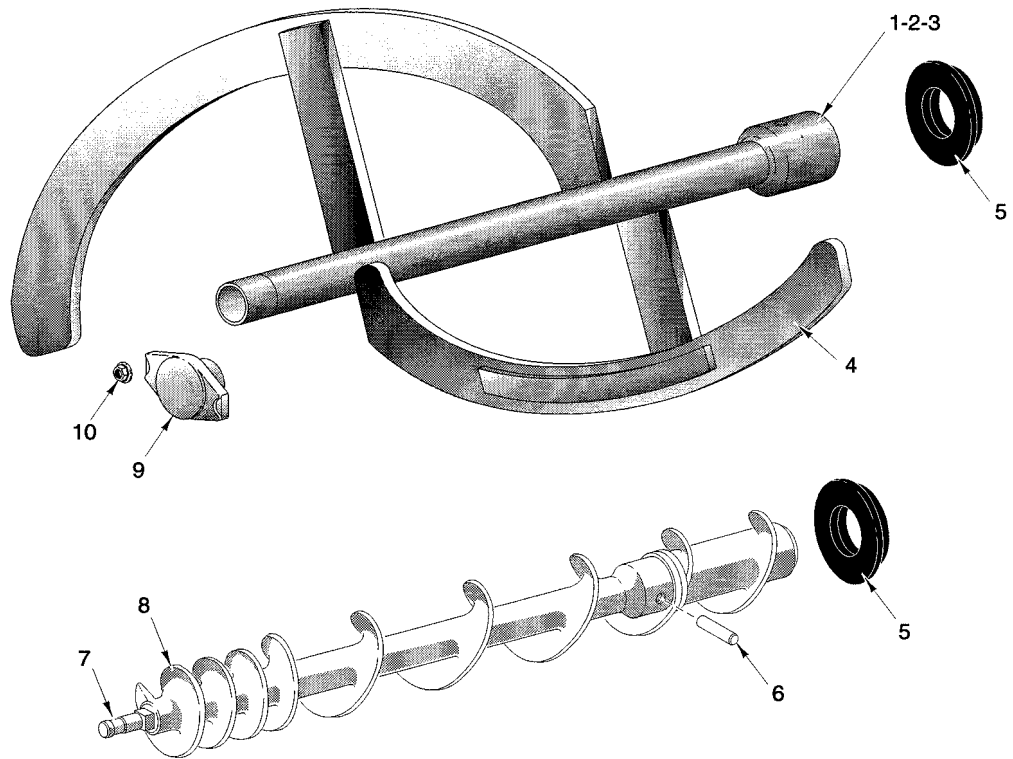
| ILLUS.   | PART NO. | NAME OF PART  | AMT. |
|----------|----------|---|------|
| PL-52764 |          |   |      |
| 1        | 477942   | Cover.....  | 1    |
| 2        | 477956   | Grommet.....  | 2    |
| 3        | SC-41-50 | Cap Screw 1/4-20 x 1/2 Hex Hd.....                          | 4    |
| 4        | 439822   | Plate - Hasp.....   | 1    |
| 5        | WS-17-6  | Washer.....   | 2    |
| 6        | WL-6-17  | Lockwasher 1/4 Medium.....                                  | 2    |
| 7        | NS-25-4  | Acorn Nut 1/4-20.....                                       | 2    |
| 8        | RR-9-10  | Retaining Ring.....   | 4    |
| 9        | 477928   | Rod - Lid Latch.....  | 2    |
| 10       | 477927   | Latch - Lid.....  | 1    |
| 11       | 477929   | Handle - Lid Latch.....                                     | 1    |
| 12       | 102825-5 | Gasket - Housing.....                                       | 2    |
| 13       | SD-38-33 | Self-Tapping Screw 10-24 x 1/2 Hex Washer Hd., Type TT..... | 3    |
| 14       | 439816-2 | Wireway - Weldment.....                                     | 1    |



**HINGE UNIT**

## HINGE UNIT

| ILLUS.<br>PL-52780 | PART NO.    | NAME OF PART   | AMT. |
|--------------------|-------------|--|------|
| 1                  | SC-41-36    | Cap Screw 3/8 x 2 1/2 Hex Hd.....  | 2    |
| 2                  | 439774      | Spacer - Hinge Spring.....   | 2    |
| 3                  | 439838      | Spring - Spiral Torsion.....   | 2    |
| 4                  | RR-4-8      | Retaining Ring.....  | 1    |
| 5                  | WS-30-80    | Washer (SST).....  | 1    |
| 6                  | 439830      | Bracket - Hinge.....   | 1    |
| 7                  | NS-38-11    | Nut -5/16 18 Hex Special (Use to fasten items 6 & 27 together).....        | 2    |
| 8                  | 439836      | Bumper.....  | 1    |
| 9                  | 477935      | Stud - Bumper.....   | 1    |
| 10                 | NS-38-11    | Nut 5/16-18 Hex Special.....   | 1    |
| 11                 | SC-41-50    | Cap Screw 1/4-20 x 1/2 Hex Hd.....   | 2    |
| 12                 | WL-6-17     | Lockwasher 1/4 Medium.....   | 2    |
| 13                 | 477977      | Holder - Magnet.....   | 1    |
| 14                 | 439834-2    | Lever - Stop (Interlock Mtg.).....   | 1    |
| 15                 | 439834      | NLA - Obsolete--Lever - Stop (R.H.).....                                   | 1    |
| 16                 | WL-6-23     | Lockwasher 5/16 Medium SST.....  | 1    |
| 17                 | SC-41-17    | Cap Screw 5/16-18 x 1 1/2 Hex Hd. SST.....                                 | 1    |
| 18                 | RR-4-8      | Retaining Ring.....  | 1    |
| 19                 | WS-30-80    | Washer (SST).....  | 1    |
| 20                 | 439845      | Bearing - Sleeve.....  | 1    |
| 21                 | 439833      | Shaft.....   | 1    |
| 22                 | 12430-42    | Key 3/16 X 3/16 X 1/2 (Use with item 21).....                              | 1    |
| 23                 | SC-113-96   | Mach. Screw 8-32 x 1/2 Hex Washer Hd.....                                  | 2    |
| 24                 | WL-14-5     | Lockwasher 8 External Shakeproof.....                                      | 2    |
| 25                 | 477976      | Bracket - Interlock Reed.....  | 1    |
| 26                 | 87711-278-1 | Switch - Reed.....   | 1    |
| 27                 | 439837-2    | Block - Bearing.....   | 1    |
| 28                 | NS-38-11    | Nut 5/16-18 Hex Special (Use to mount item 6).....                         | 2    |
| 29                 | 439839      | Hinge Assy. (LH)(Incls. items 6 thru 10 & 18 thru 21).....                 | 1    |
| 30                 | 477949      | NLA - Obsolete--Hinge Assy. (RH)(Incls. items 6 thru 10 & 18 thru 21)..... | 1    |
| 31                 | 522898      | Tie - Cable.....   | 2    |

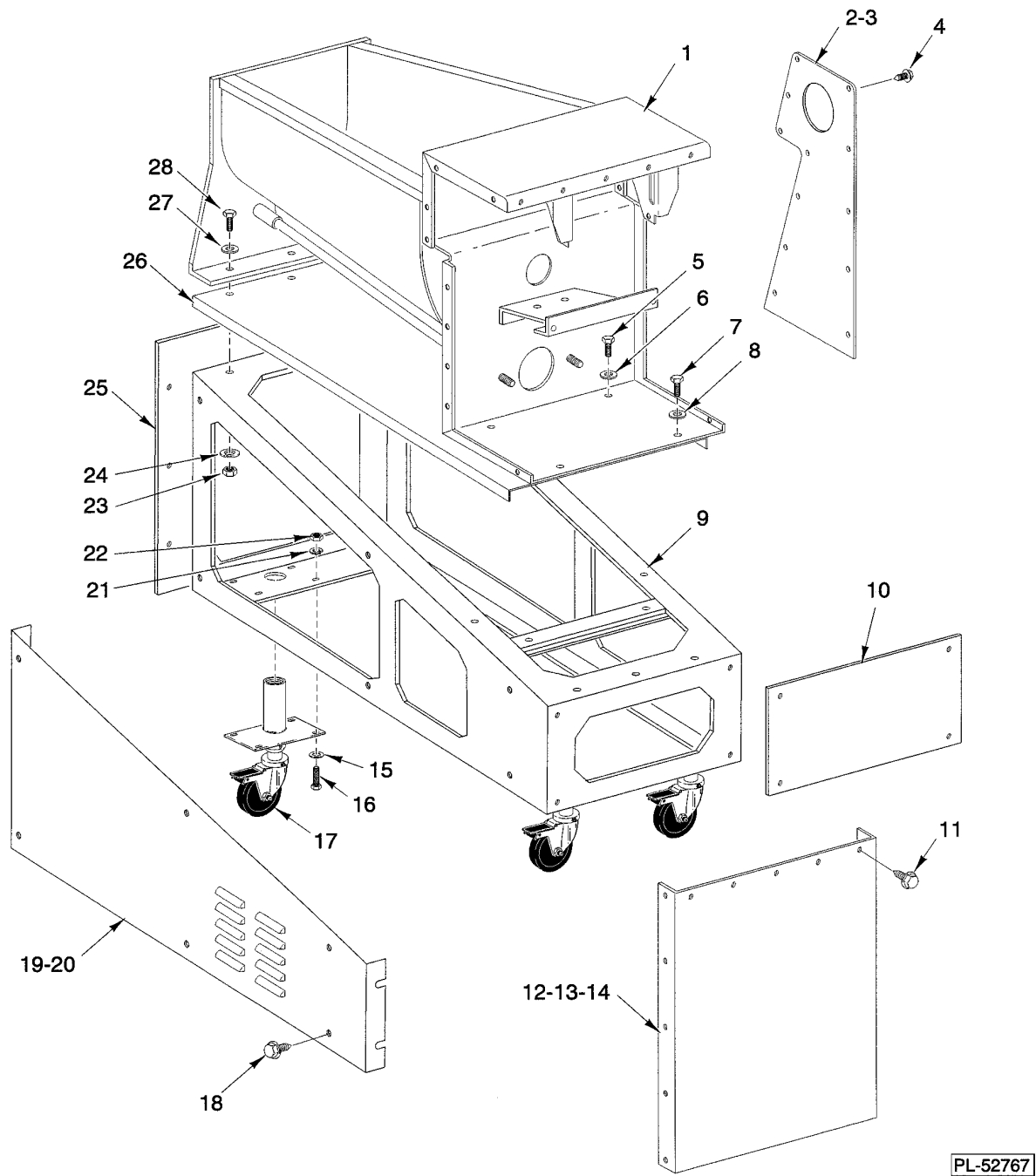


PL-52766

### CONVEYOR & MIXING ARM UNIT

**CONVEYOR & MIXING ARM UNIT**

| ILLUS.   | PART NO. | NAME OF PART   | AMT. |
|----------|----------|--|------|
| PL-52766 |          |  |      |
| 1        | 477938   | Mix Arm & Coupling Assy. (Incls. items 1,2,3,4 & 6)..... | 1    |
| 2        | 186706   | Plug.....  | 1    |
| 3        | 477960   | Pin - Shear.....   | 1    |
| 4        | 439814   | Mix Arm Assy.....  | 1    |
| 5        | 439773   | Seal - Mix Arm.....                                      | 2    |
| 6        | 477960   | Pin - Shear.....   | 1    |
| 7        | 110576   | Stud - Plate.....  | 1    |
| 8        | 439809   | Conveyor Assy. (Incls. items 6 & 7).....                 | 1    |
| 9        | 439763   | Retainer - Assy.....                                     | 1    |
| 10       | 69862    | Nut - Cylinder.....                                      | 2    |

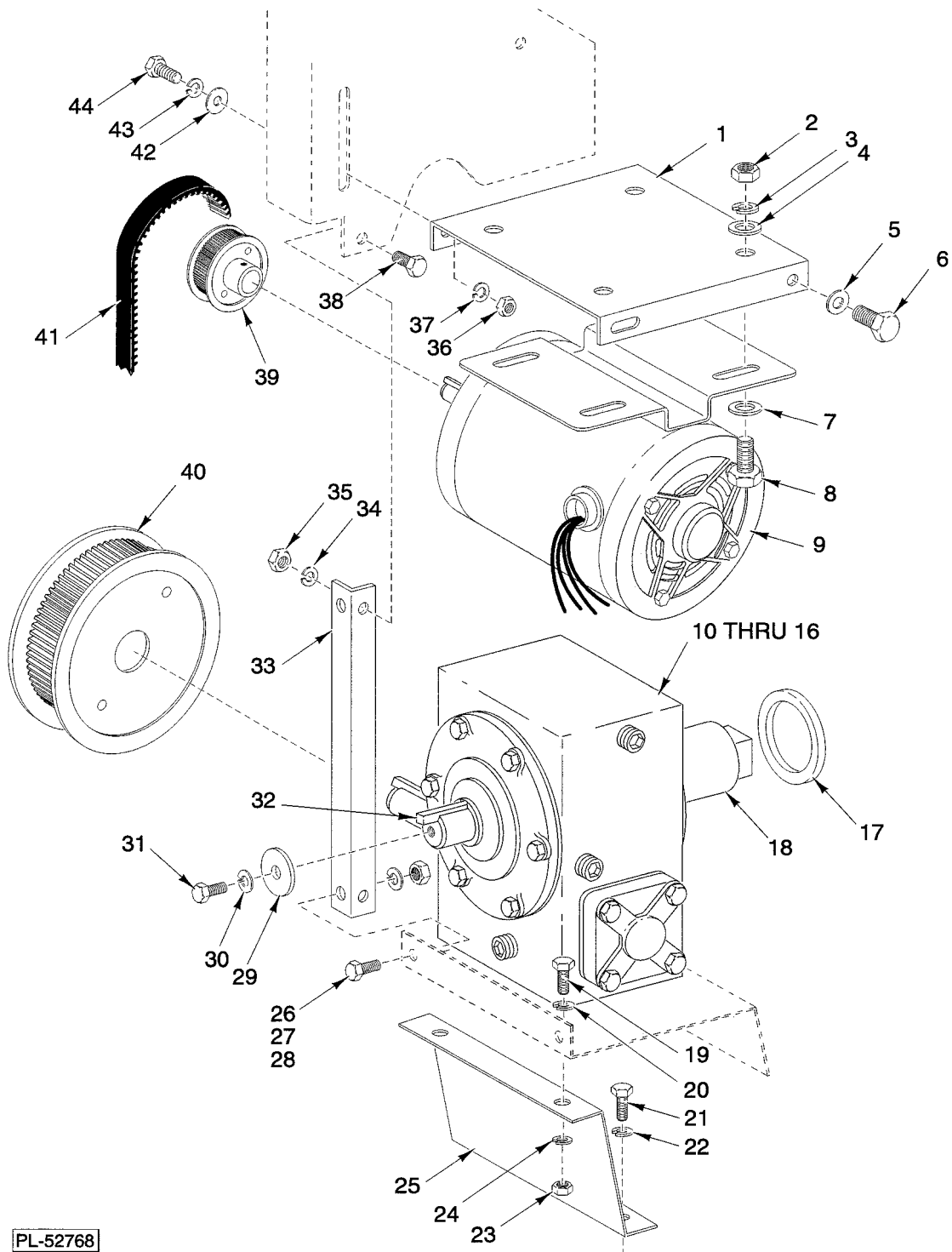


**FRAME & HOPPER UNIT**



### FRAME & HOPPER UNIT

| ILLUS.<br>PL-52767 | PART NO. | NAME OF PART  | AMT. |
|--------------------|----------|---|------|
| 1                  | 439746-2 | Hopper Assy.....  | 1    |
| 2                  | 439826-1 | Panel - Upper Side (LH)(Shown).....                         | 1    |
| 3                  | 439826-2 | Panel - Upper Side (RH).....                                | 1    |
| 4                  | SD-38-33 | Self-Tapping Screw 10-24 x 1/2 Hex Washer Hd., Type TT..... | 13   |
| 5                  | SC-41-31 | Cap Screw 3/8-16 x 1 1/4 Hex Hd.....                        | 2    |
| 6                  | WS-30-5  | Washer.....   | 2    |
| 7                  | SC-41-31 | Cap Screw 3/8 -16 x 1 1/4 Hex Hd.....                       | 2    |
| 8                  | WS-30-5  | Washer.....   | 2    |
| 9                  | 439753   | NLA - Obsolete--Frame Assy.....                             | 1    |
| 10                 | 439828-2 | Panel - Back.....   | 1    |
| 11                 | SD-38-33 | Self-Tapping Screw 10-24 x 1/2 Hex Washer Hd., Type TT..... | 13   |
| 12                 | 439824-2 | Panel - Upper Back.....                                     | 1    |
| 13                 | 527014   | Gasket - Rear Panel.....                                    | AR   |
| 14                 | SD-38-33 | Self-Tapping Screw 10-24 x 1/2 Hex Washer Hd., Type TT..... | 13   |
| 15                 | WS-5-42  | Washer.....   | 4    |
| 16                 | SC-37-85 | Cap Screw 5/16-18 x 1 Hex Hd.....                           | 4    |
| 17                 | 477924   | Caster - 4" Wheel.....                                      | 4    |
| 18                 | SD-38-33 | Self-Tapping Screw 10-24 x 1/2 Hex Washer Hd., Type TT..... | 8    |
| 19                 | 439829-1 | Panel - Lower Side (LH).....                                | 1    |
| 20                 | 439829-2 | Panel - Lower Side (RH)(Shown).....                         | 1    |
| 21                 | WL-3-47  | Lockwasher 5/16 Medium.....                                 | 4    |
| 22                 | NS-13-14 | Full Nut 5/16-18 Hex.....                                   | 4    |
| 23                 | NS-15-13 | Full Nut 3/8-16 Hex SST.....                                | 3    |
| 24                 | WL-6-28  | Lockwasher 3/8 Medium.....                                  | 3    |
| 25                 | 439827   | Panel - Front.....  | 1    |
| 26                 | 439795-2 | Tablecloth.....   | 1    |
| 27                 | WS-30-5  | Washer.....   | 3    |
| 28                 | SC-41-31 | Cap Screw 3/8 -16 x 1 1/4 Hex Hd.....                       | 3    |

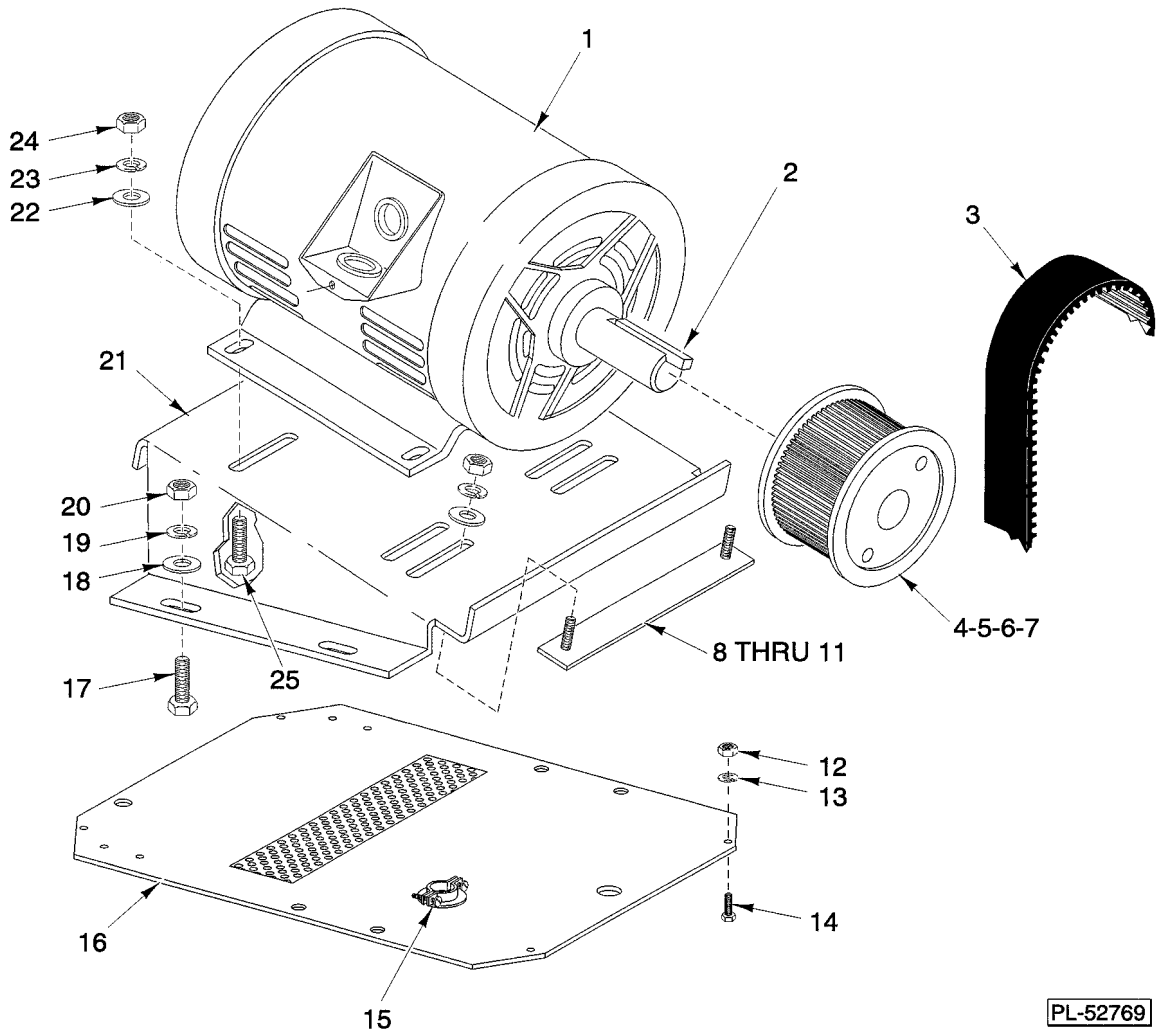


PL-52768

**MIX MOTOR UNIT**

## MIX MOTOR UNIT

| ILLUS.   | PART NO.  | NAME OF PART  | AMT. |
|----------|-----------|---|------|
| PL-52768 |           |   |      |
| 1        | 439781    | NLA - Obsolete--Bracket - Nut (Mix Motor).....              | 1    |
| 2        | NS-13-14  | Full Nut 5/16-18 Hex.....                                   | 4    |
| 3        | WL-6-23   | Lockwasher 5/16 Medium SST.....                             | 4    |
| 4        | WS-5-39   | Washer.....   | 4    |
| 5        | WL-6-28   | Lockwasher 3/8 Medium.....                                  | 2    |
| 6        | SC-62-43  | Cap Screw 3/8-16 x 3/4 Hex Hd.....                          | 2    |
| 7        | WS-5-39   | Washer.....   | 4    |
| 8        | SC-41-10  | Cap Screw 5/16-18 x 5/8 Hex Hd.....                         | 4    |
| 9        | 435805-2  | Motor Assy (208-240/480 V, 60 Hz, 3 Ph, 1 H.P.).....        | 1    |
| 10       | 186696    | Gear Reducer.....   | 1    |
| 11       | SC-62-43  | Cap Screw 3/8-16 x 3/4 Hex Hd. (Used to mount item 10)..... | 4    |
| 12       | WL-6-28   | Lockwasher 5/16 Medium (Used to mount item 10).....         | 4    |
| 13       | 186646-1  | Shim (.120 THK.).....                                       | AR   |
| 14       | 186646-2  | Shim (.060 THK.).....                                       | AR   |
| 15       | 186646-3  | Shim (.030 THK.).....                                       | AR   |
| 16       | 186646-4  | Shim (.018 THK.).....                                       | AR   |
| 17       | WS-14-37  | Washer.....   | AR   |
| 18       | 439743    | Shaft - Mix Arm (Square Drive).....                         | 1    |
| 19       | SC-41-10  | Cap Screw 5/16 -18 x 5/8 Hex Hd.....                        | 4    |
| 20       | WL-6-23   | Lockwasher 5/16 Medium SST.....                             | 2    |
| 21       | SC-62-43  | Cap Screw 3/8-16 x 3/4 Hex Hd.....                          | 2    |
| 22       | WL-6-28   | Lockwasher 3/8 Medium.....                                  | 2    |
| 23       | NS-13-14  | Full Nut 5/16-18 Hex.....                                   | 4    |
| 24       | WL-6-23   | Lockwasher 5/16 Medium SST.....                             | 2    |
| 25       | 439749    | Brace - Mix Drive Grind.....                                | 1    |
| 26       | SC-41-10  | Cap Screw 5/16-18 x 5/8 Hex Hd.....                         | 4    |
| 27       | WL-6-23   | Lockwasher 5/16 Medium SST.....                             | 4    |
| 28       | NS-13-14  | Full Nut 5/16-18 Hex.....                                   | 4    |
| 29       | 186703    | Washer.....   | 1    |
| 30       | WL-6-28   | Lockwasher 3/8 Medium.....                                  | 1    |
| 31       | SC-62-22  | Cap Screw 3/8-16 x 1 1/4 Hex Hd.....                        | 1    |
| 32       | 12430-196 | Key 1/4 x 1/4 x 4 3/4.....                                  | 2    |
| 33       | 439757-2  | Brace - Mix Drive.....                                      | 2    |
| 34       | WL-6-23   | Lockwasher 5/16 Medium SST.....                             | 4    |
| 35       | NS-13-14  | Full Nut 5/16-18 Hex.....                                   | 2    |
| 36       | NS-13-14  | Full Nut 5/16-18 Hex.....                                   | 2    |
| 37       | WL-6-23   | Lockwasher 5/16 Medium SST.....                             | 2    |
| 38       | SC-41-10  | Cap Screw 5/16-18 x 5/8 Hex Hd.....                         | 4    |
| 39       | 186622    | Pulley - Driver (16T).....                                  | 1    |
| 40       | 186723    | Pulley - Driven (102T).....                                 | 1    |
| 41       | 186714    | Belt - Flexa-Gear.....                                      | 1    |
| 42       | WS-5-39   | Washer.....   | 2    |
| 43       | WL-6-23   | Lockwasher 5/16 Medium SST.....                             | 2    |
| 44       | SC-37-85  | Cap Screw 5/16-18 x 1 Hex Hd.....                           | 2    |



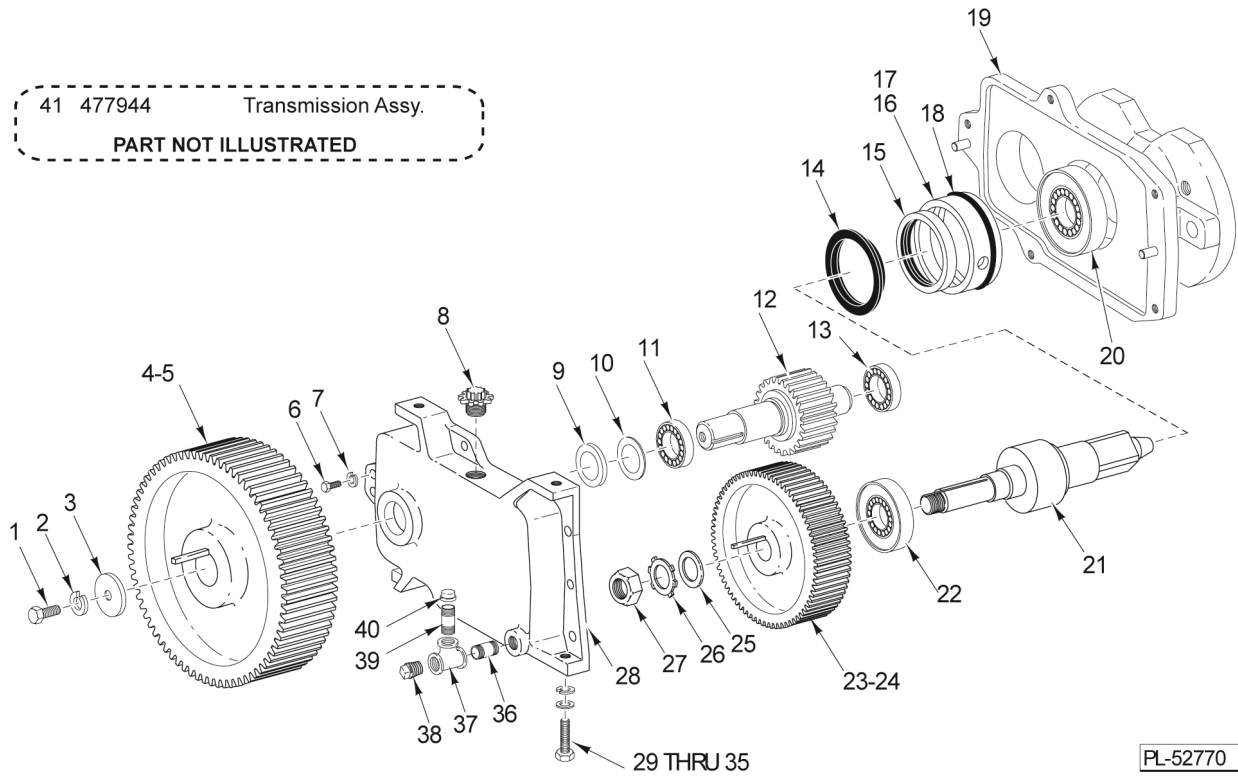
PL-52769

**GRIND MOTOR UNIT**

## GRIND MOTOR UNIT

| ILLUS.<br>PL-52769 | PART NO.  | NAME OF PART                                      | AMT. |
|--------------------|-----------|---|------|
| 1                  | 435697-3  | Motor - Drive (208 V, 60 Hz, 3 Ph, 7.5 H.P.)..... | 1    |
| 2                  | 12430-178 | Key - 1/4 x 1/4 x 1 1/2.....                      | 1    |
| 3                  | 186713    | Belt - Flexa-Gear.....                            | 1    |
| 4                  | 477947-1  | Pulley - Timing (40T).....                        | 1    |
| 5                  | 477947-2  | Pulley - Hub (Screws supplied).....               | 1    |
| 6                  | 477948-1  | Pulley - Timing (40T).....                        | 1    |
| 7                  | 477948-2  | Pulley - Hub.....                                 | 1    |
| 8                  | 439782    | Stud & Plate.....                                 | 1    |
| 9                  | NS-15-13  | Full Nut 3/8-16 Hex SST.....                      | 2    |
| 10                 | WL-6-28   | Lockwasher 3/8 Medium.....                        | 2    |
| 11                 | WS-30-5   | Washer.....                                       | 2    |
| 12                 | NS-10-16  | Mach. Nut 10-24 Hex.....                          | 4    |
| 13                 | WL-10-6   | Lockwasher 10 Ext. Shakeproof.....                | 4    |
| 14                 | SC-27-41  | Mach. Screw 10-24 x 3/8 Rd. Hd.....               | 4    |
| 15                 | FE-23-47  | Connector - Cable.....                            | 1    |
| 16                 | 477941    | NLA - Obsolete--Panel - Bottom.....               | 1    |
| 17                 | SC-41-31  | Cap Screw 3/8 -16 x 1 1/4 Hex Hd.....             | 6    |
| 18                 | WS-18-4   | Washer.....                                       | 4    |
| 19                 | WL-6-28   | Lockwasher 3/8 Medium.....                        | 4    |
| 20                 | NS-15-13  | Full Nut 3/8-16 Hex SST.....                      | 4    |
| 21                 | 439744    | NLA - Obsolete--Bracket - Motor Mounting.....     | 1    |
| 22                 | WS-30-5   | Washer.....                                       | 4    |
| 23                 | WL-6-28   | Lockwasher 3/8 Medium.....                        | 4    |
| 24                 | NS-15-13  | Full Nut 3/8-16 Hex SST.....                      | 4    |
| 25                 | SC-41-31  | Cap Screw 3/8-16 x 1 1/4 Hex Hd.....              | 4    |

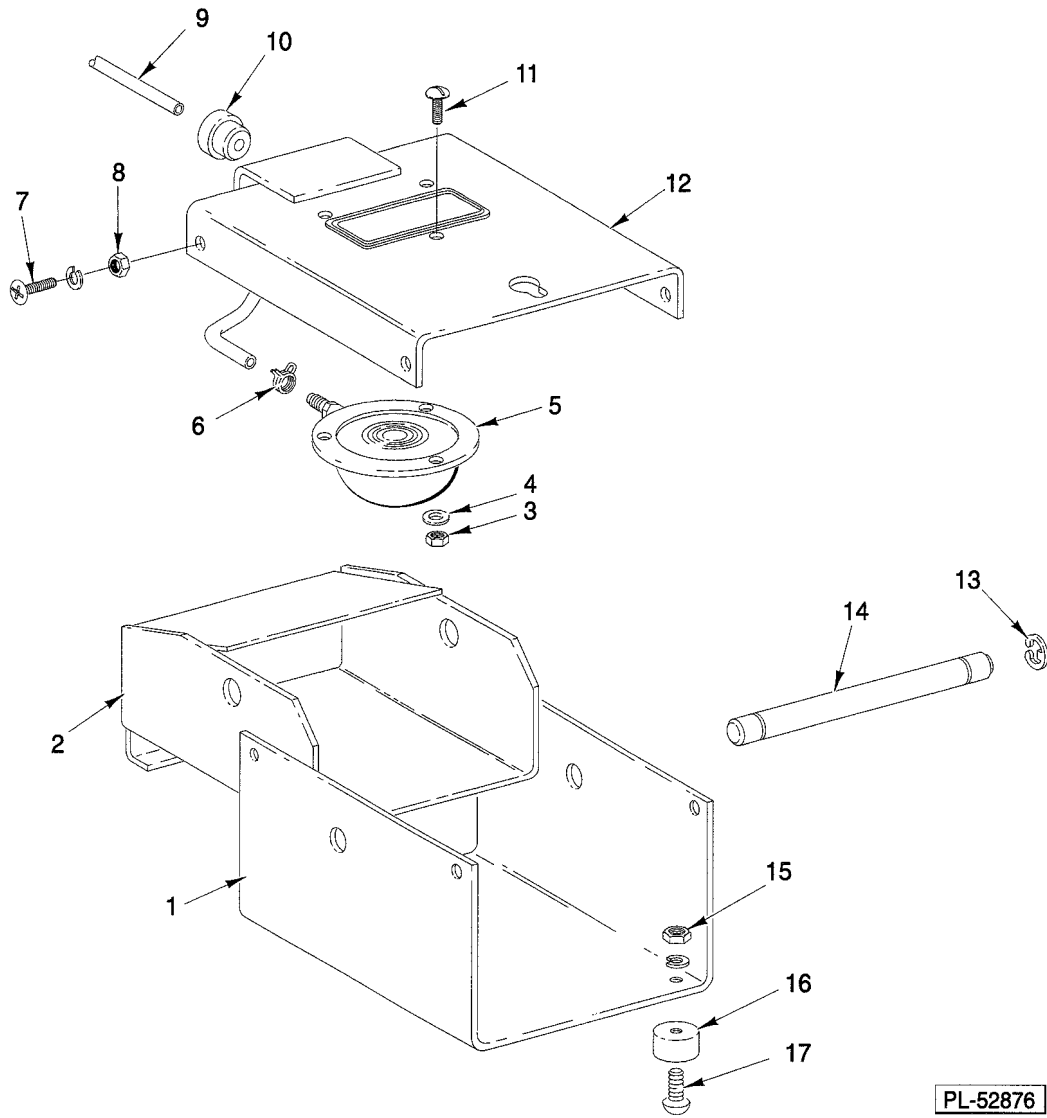
41 477944 Transmission Assy.  
PART NOT ILLUSTRATED



**TRANSMISSION UNIT**

**TRANSMISSION UNIT**

| ILLUS.   | PART NO.  | NAME OF PART  | AMT. |
|----------|-----------|---|------|
| PL-52770 |           |   |      |
| 1        | SC-062-22 | Cap Screw 3/8-16 x 1-1/4 Hex Hd.....                          | 1    |
| 2        | WL-6-28   | Lockwasher 3/8 Medium.....                                    | 1    |
| 3        | 186703    | Washer.....   | 1    |
| 4        | 12430-178 | Key - 1/4 x 1/4 x 1 1/2.....                                  | 1    |
| 5        | 186723    | Pulley - Driven (102T).....                                   | 1    |
| 6        | SC-36-71  | Cap Screw 3/8-16 x 1 1/4 Hex Hd.....                          | 5    |
| 7        | WL-6-28   | Lockwasher 3/8 Medium.....                                    | 5    |
| 8        | 108963-2  | Plug - Oil Fill.....  | 1    |
| 9        | 186657    | Seal - Oil.....   | 1    |
| 10       | SL-3-11   | Spring - Loading ND 72.....                                   | 1    |
| 11       | BB-7-21   | Ball Bearing - N.D. 3207.....                                 | 1    |
| 12       | 477940    | Shaft - Pinion (18T).....                                     | 1    |
| 13       | BB-18-33  | Ball Bearing - Fafnir #205KF.....                             | 1    |
| 14       | 105196    | Seal - Outer.....   | 1    |
| 15       | 108591    | Seal - Square Drive Shaft.....                                | 1    |
| 16       | 186655    | Retainer - Seal.....  | 1    |
| 17       | SC-47-35  | Set Screw 5/16 -18 x 1/2 Hdls, Cup Pt.....                    | 1    |
| 18       | 67500-52  | "O" Ring.....   | 1    |
| 19       | 477946-2  | Hub - Attachment.....   | 1    |
| 20       | BR-2-28   | Roller Bearing - Cone & Cup Assy.....                         | 1    |
| 21       | 439742    | Shaft - Grind Worm Drive.....                                 | 1    |
| 22       | BR-2-20   | Roller Bearing - Cone & Cup Assy.....                         | 1    |
| 23       | 477939    | Gear (57T).....   | 1    |
| 24       | 12430-215 | Key.....  | 1    |
| 25       | 186658    | Washer - Keyed.....   | 1    |
| 26       | WL-17-7   | Lockwasher - Bearing Lock Nut.....                            | 1    |
| 27       | NS-34-7   | Nut - N-06.....   | 1    |
| 28       | 477945-2  | Case - Gear.....  | 1    |
| 29       | SC-62-22  | Cap Screw 3/8-16 x 1 1/4 Hex Hd.....                          | 2    |
| 30       | WL-6-28   | Lockwasher 3/8 Medium.....                                    | 2    |
| 31       | WS-18-4   | Washer.....   | 2    |
| 32       | 186646-1  | Shim (.120 THK.).....   | AR   |
| 33       | 186646-2  | Shim (.060 THK.).....   | AR   |
| 34       | 186646-3  | Shim (.030 THK.).....   | AR   |
| 35       | 186646-4  | Shim (.018 THK.).....   | AR   |
| 36       | FP-35-46  | Pipe 3/8 x 1 Lg. (T.B.E).....                                 | 1    |
| 37       | FP-19-10  | Tee 3/8 x 3/8 x 3/8.....                                      | 1    |
| 38       | FP-28-9   | Plug - Pipe 3/8 Square Hd.....                                | 1    |
| 39       | FP-35-52  | Nipple 3/8 x 2 TBE.....                                       | 1    |
| 40       | FP-77-75  | NLA - Obsolete--Cap - Pipe 3/8.....                           | 1    |
| 41       | 477944    | Transmission Assy. (Incls. items 6 thru 28 & 36 thru 40)..... | 1    |

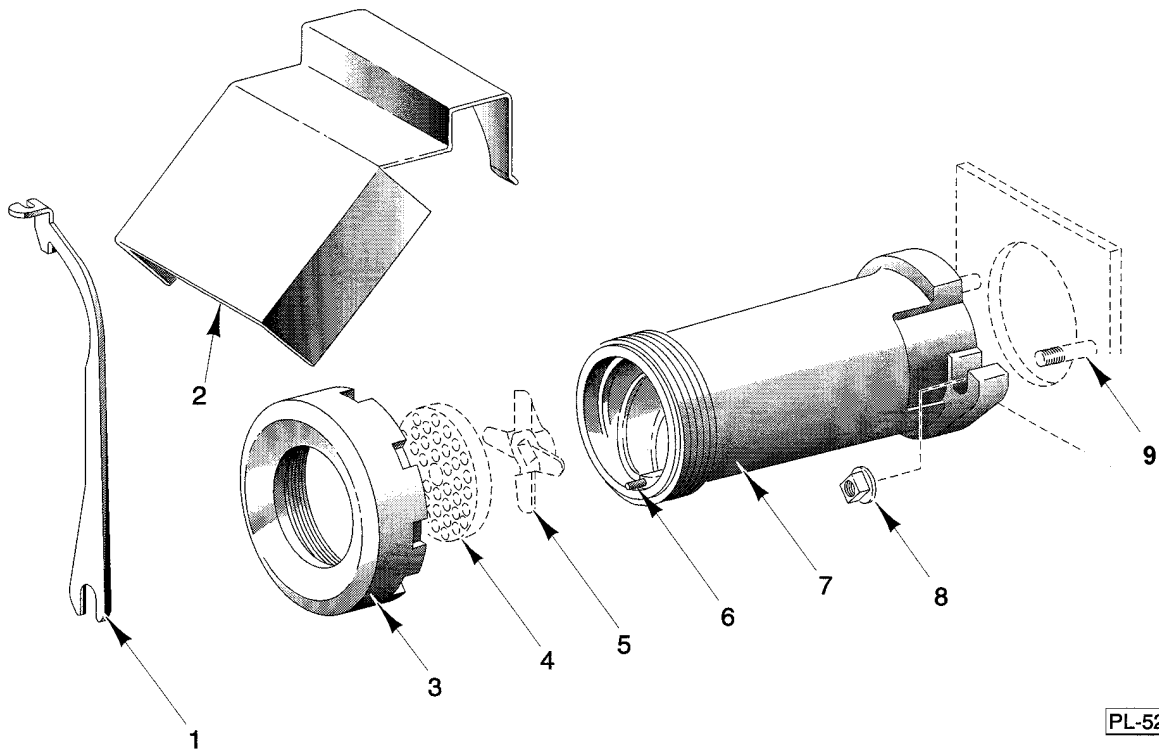


**FOOT SWITCH UNIT**



**FOOT SWITCH UNIT**

| ILLUS.   | PART NO.    | NAME OF PART                                    | AMT. |
|----------|-------------|---|------|
| PL-52876 |             |   |      |
| 1        | 292632      | Base - Foot Switch.....                         | 1    |
| 2        | 292635      | Switch - Rocker Assy.....                       | 1    |
| 3        | NS-31-8     | Stop Nut 8-32 Special.....                      | 3    |
| 4        | WS-19-10    | Washer.....                                     | 3    |
| 5        | 87711-214-1 | Actuator - Air Switch.....                      | 1    |
| 6        | 115747-8    | Clamp - Hose.....                               | 2    |
| 7        | SC-21-23    | Mach. Screw 10-24 x 1/2 Rd. Hd.....             | 4    |
| 8        | NS-31-15    | Stop Nut - Special 10-24 Hex (SST).....         | 4    |
| 9        | 292629      | Tubing - Air (72").....                         | 1    |
| 10       | FE-25-16    | Strain Relief.....                              | 1    |
| 11       | SC-21-15    | Mach. Screw 8-32 x 1/2 Rd Hd, Slotted.....      | 3    |
| 12       | 439861-2    | Cover-Foot Switch.....                          | 1    |
| 13       | RR-10-12    | Retaining Ring.....                             | 2    |
| 14       | 292638      | Shaft - Pivot.....                              | 1    |
| 15       | NS-31-15    | Stop Nut - Special 10-24 Hex (SST).....         | 4    |
| 16       | 19105-2     | Bumper.....                                     | 4    |
| 17       | SC-21-24    | Mach. Screw 10-24 x 5/8 Rd Hd.....              | 4    |
|          | 295284      | Foot Switch Assy. (Incls. items 1 thru 17)..... | 1    |



PL-52771

**#32 GRINDER UNIT**

**#32 GRINDER UNIT**

| ILLUS.   | PART NO.        | NAME OF PART                  | AMT. |
|----------|-----------------|-------------------------------|------|
| PL-52771 |                 |                               |      |
| 1        | 439242          | Wrench - Cylinder.....        | 1    |
| 2        | 292953          | Deflector - Meat.....         | 1    |
| 3        | 00-873697       | Ring - Adjusting.....         | 1    |
| 6        | 105806          | Pin - Plate.....              | 1    |
| 7        | 00-873720-00002 | Cylinder #32 (Mach. SST)..... | 1    |
| 8        | 69862           | Nut - Cylinder.....           | 2    |
| 9        | 00-118266       | Stud.....                     | 2    |

