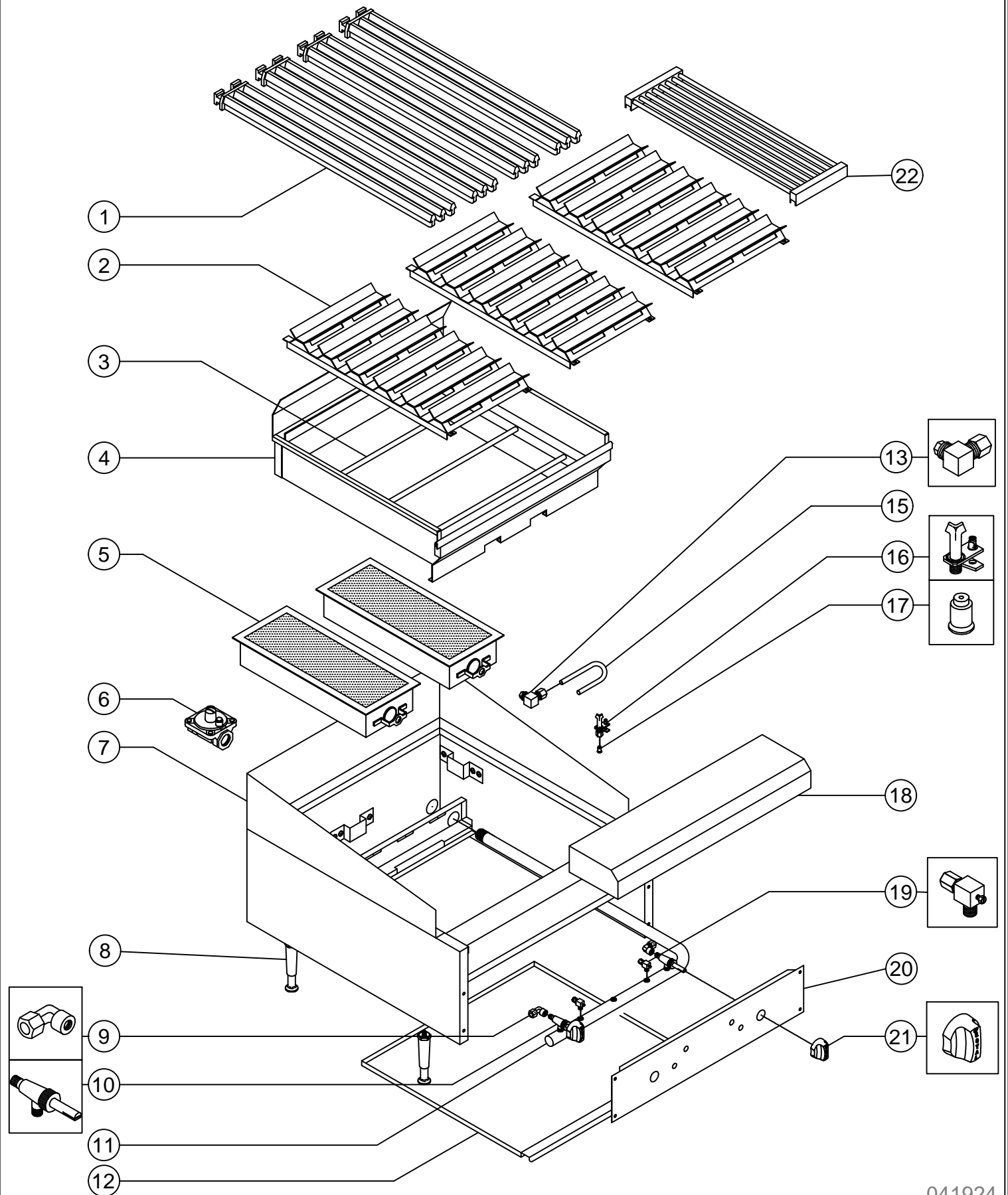


RIB INFRA RED RADIANT BROILER



RIB

INFRA RED RADIANT BROILER

ITEM NO.	PART NO.	DESCRIPTION
1	1900	3" X 21" Top Grate
2	31413	10" Radiant Assy. (2) Assy per unit (All sizes)
	31414	11 3/8" Radiant Assy (See below for quantities used per unit)
3	31467	Cross Rod Specify Model #
4	31470	24" Fire box Assy.
	31530	36" Fire box Assy.
	31580	48" Fire box Assy
	31623	60" Fire box Assy.
5	1604	Infra-red burner (B-20)
6	1618	Gas pressure regulator (Natural)
	1619	Gas pressure regulator (Propane)
7	Misc.	S/S Splash guard Assy (Must Specify if Tapered and Measurement)
8	3604	4" Adjustable leg
9	1508	Elbow brass fitting
10	1628	On/Off burner Valve
11	1051	Manifold pipe -24"
	1053	Manifold pipe -36"
	1054	Manifold pipe -48"
	1055	Manifold pipe -60"
12	31469	24" Crumb tray
	31639	36" Crumb tray
	31573	48" Crumb tray
		60" Unit uses (1) 24" Crumb tray & (1) 36" Crumb Tray
13	1213	90° Orifice Elbow Rectangular
14	2007-40	Spud Orifice #40 (Natural)
	2010-52	Spud Orifice #52 (Propane)
15	1003-**	3/8" Aluminum tubing
16	1649	Pilot burner w/bell orifice (Natural)
	1650	Pilot burner w/bell orifice (Propane)
17	1651	#18 Pilot bell orifice only (Natural)
	1652	#10 Pilot bell orifice only (Propane)
18	31466	24" Landing ledge
	31516	36" Landing ledge
	31565	48" Landing ledge
	31617	60" Landing ledge
19	1625	90° Adjustable single pilot valve

CONTINUE

041924

RIB

INFRA RED RADIANT BROILER

ITEM NO.	PART NO.	DESCRIPTION
20	31462	24" Valve cover
	31512	36" Valve cover
	31562	48" Valve cover
	31601	60" Valve cover
21	3095	Knob
22	MISC.	S/S Round rod top grate (Must specify Model #)
		Number of 1 1/8" Radiant Assy used per unit.
		24" = 0
		36" = 1
		48" = 2
		60" = 3